

Supplementary Material

Complex-assisted PtZn alloy formation for propane dehydrogenation

Chaokai Xu,^a Bingqing Yao,^a and Qian He^{a,*}

^a Department of Material Science and Engineering, College of Design and Engineering, National University of Singapore, 9 Engineering Drive 1, EA #03-09, 117575, Singapore
Email: mseheq@nus.edu.sg

Table of Contents

Figure S1. XRD patterns of SiO ₂ support and reduced catalysts.....	S2
Figures S2-S4. Additional HAADF-STEM images of reduced PtZn/SiO ₂	S2
Figure S5. Energy dispersive X-ray spectrum of PtZn alloy nanoparticle in reduced PtZn/SiO ₂ -O	S4
Figure S6. PtZn particle with ordered structure in reduced PtZn/SiO ₂ -C	S5
Figure S7. (a) EDS mapping of the big Pt ₁ Zn ₁ particle in reduced PtZn/SiO ₂ -C and (b) the lattice spacing measured in the highlighted area	S5
Figure S8. SEM-BSD images of reduced PtZn/SiO ₂ -O.....	S5
Figure S9. SEM-BSD images of reduced PtZn/SiO ₂ -C	S6
Figure S10. SEM-BSD images of reduced Pt/SiO ₂	S6

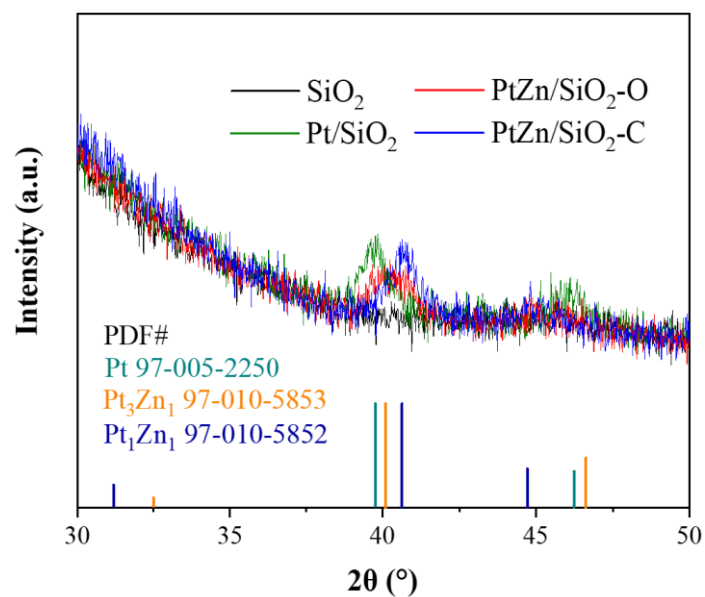


Figure S1. XRD patterns of SiO_2 support and reduced catalysts.

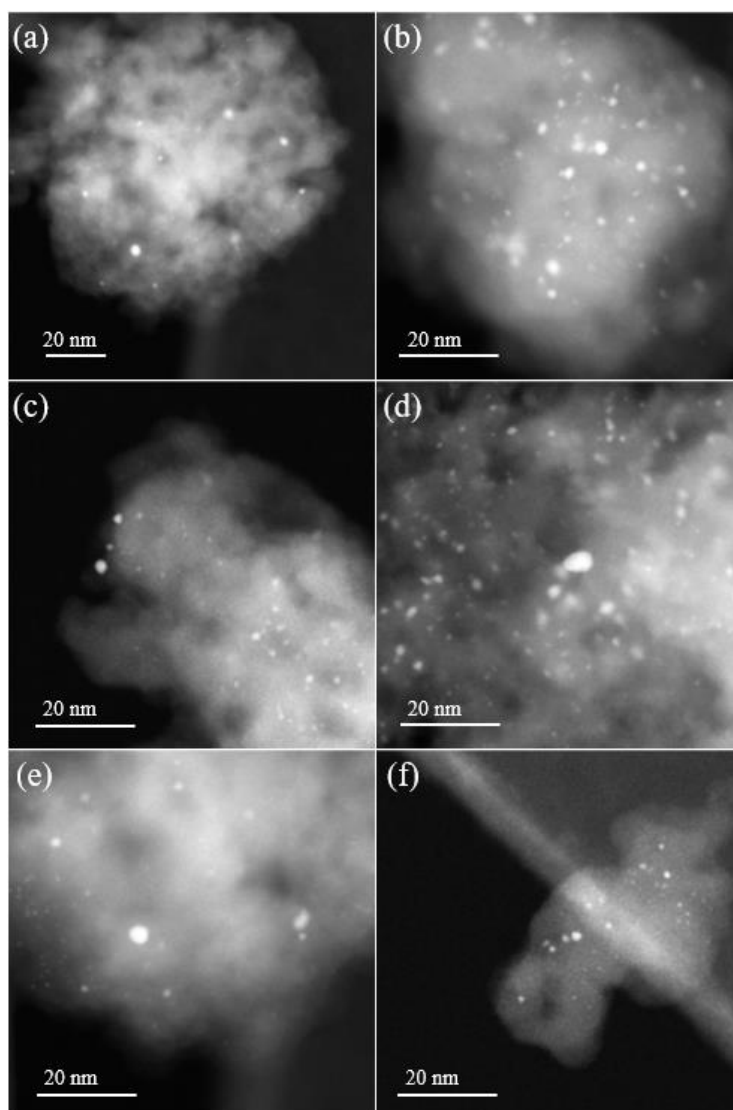


Figure S2. Additional HAADF-STEM images of reduced $\text{PtZn/SiO}_2\text{-O}$.

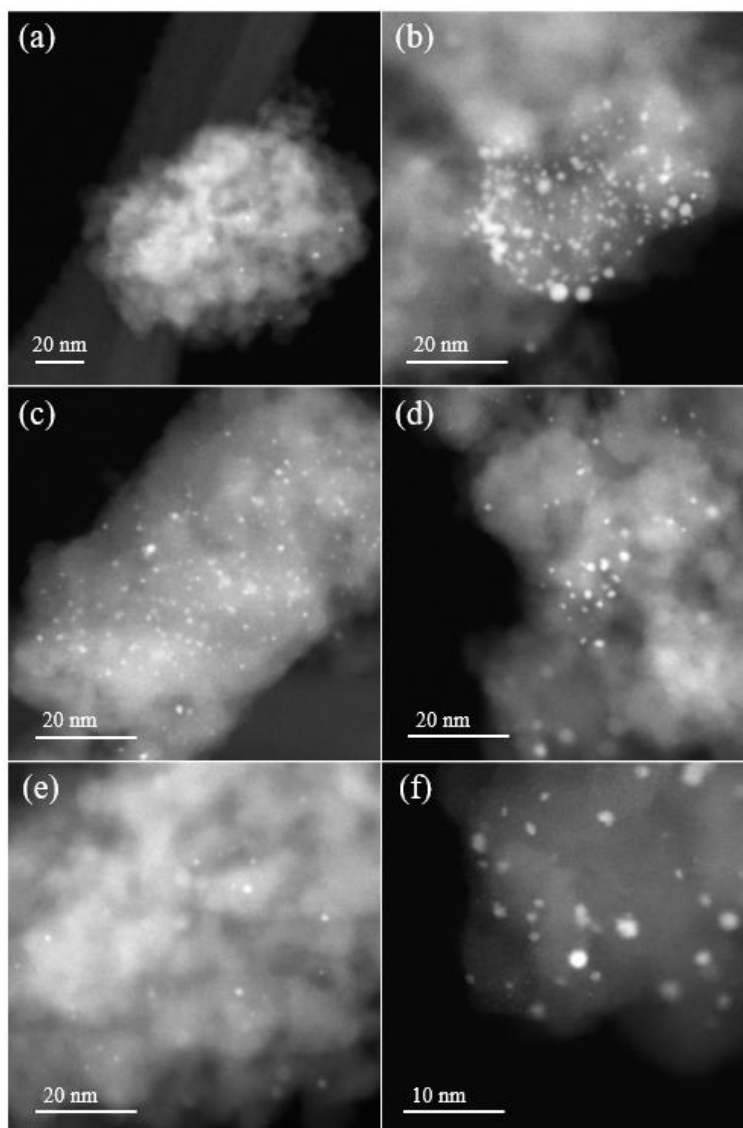


Figure S3. Additional HAADF-STEM images of reduced PtZn/SiO₂-C.

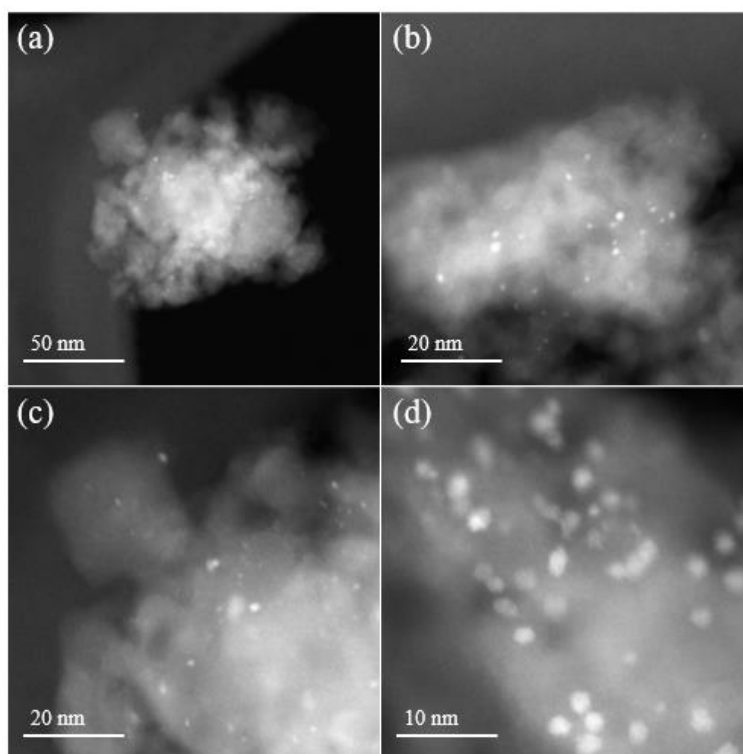


Figure S4. Additional HAADF-STEM images of reduced Pt/SiO₂.

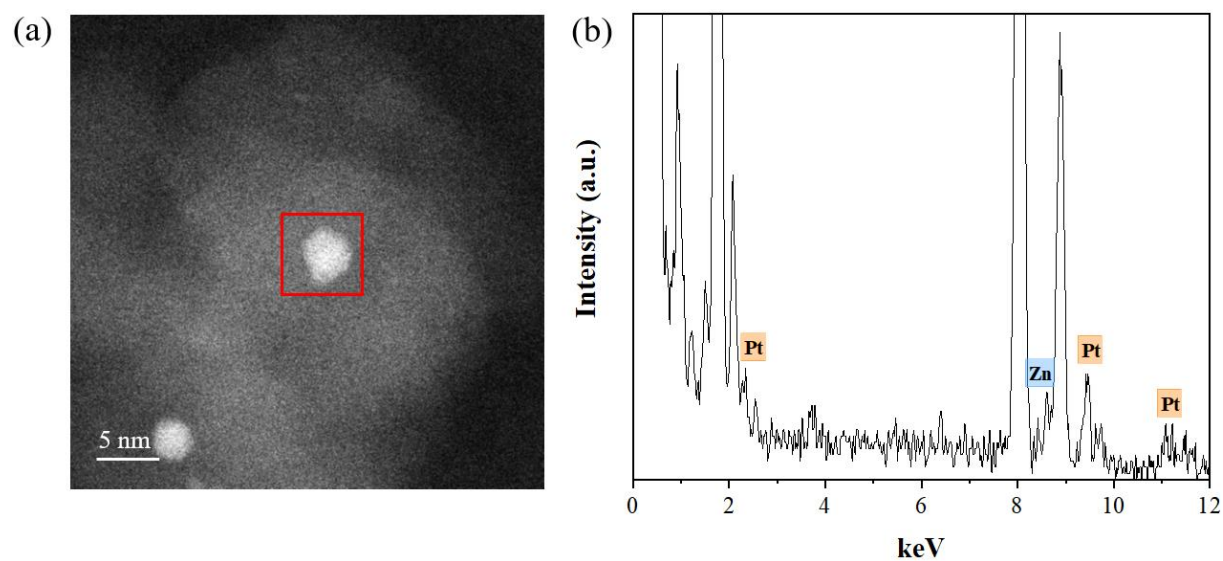


Figure S5. Energy dispersive X-ray spectrum of PtZn alloy nanoparticle in reduced PtZn/SiO₂-O.

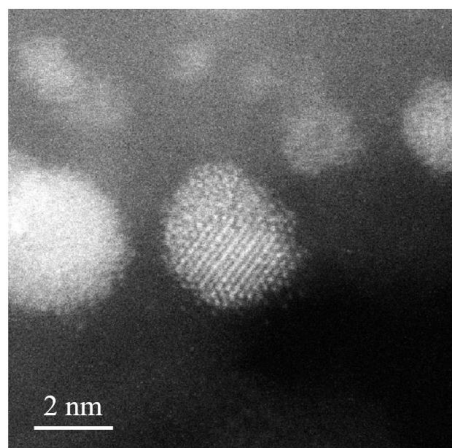


Figure S6. PtZn particle with ordered structure in reduced PtZn/SiO₂-C.

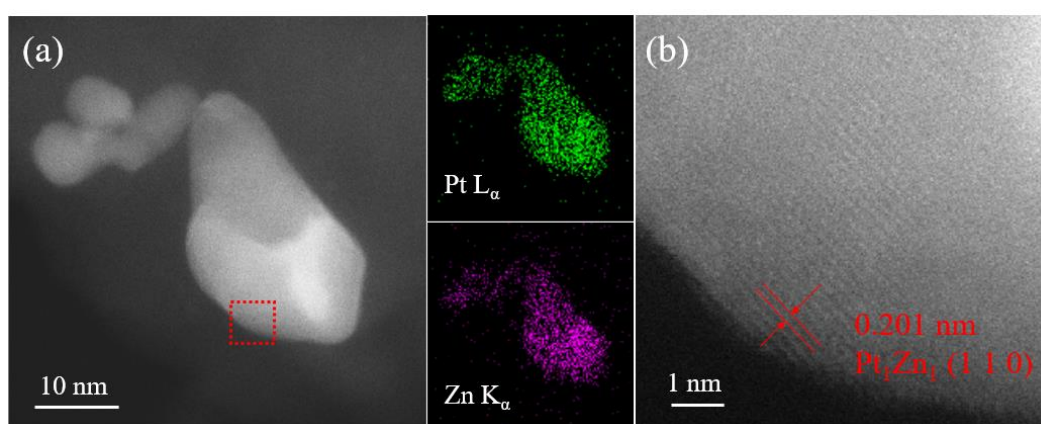


Figure S7. (a) EDS mapping of the big Pt₁Zn₁ particle in reduced PtZn/SiO₂-C and (b) the lattice spacing measured in the highlighted area.

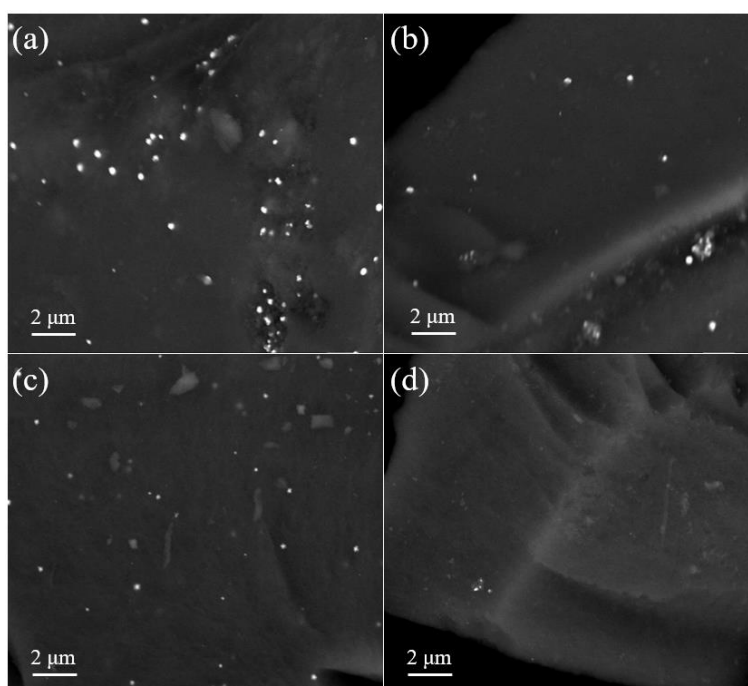


Figure S8. SEM-BSD images of reduced PtZn/SiO₂-O.

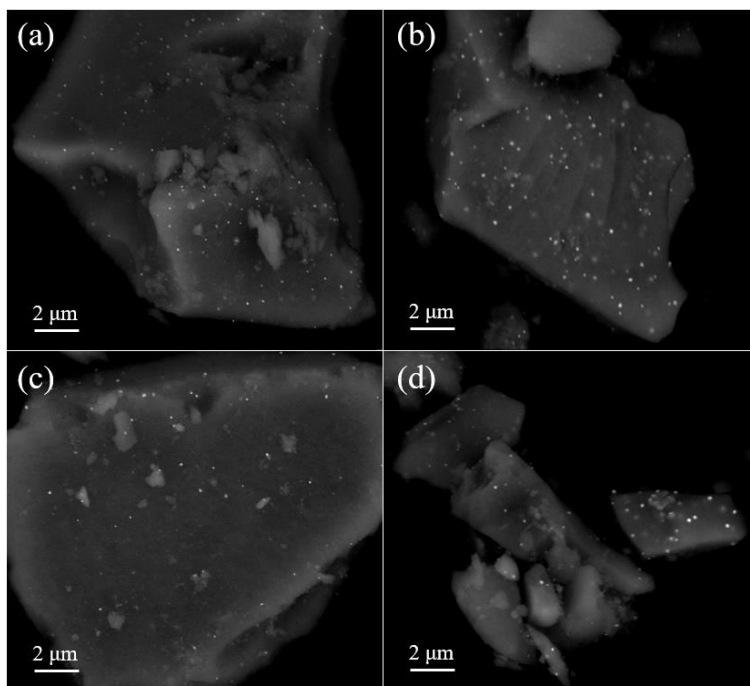


Figure S9. SEM-BSD images of reduced PtZn/SiO₂-C.

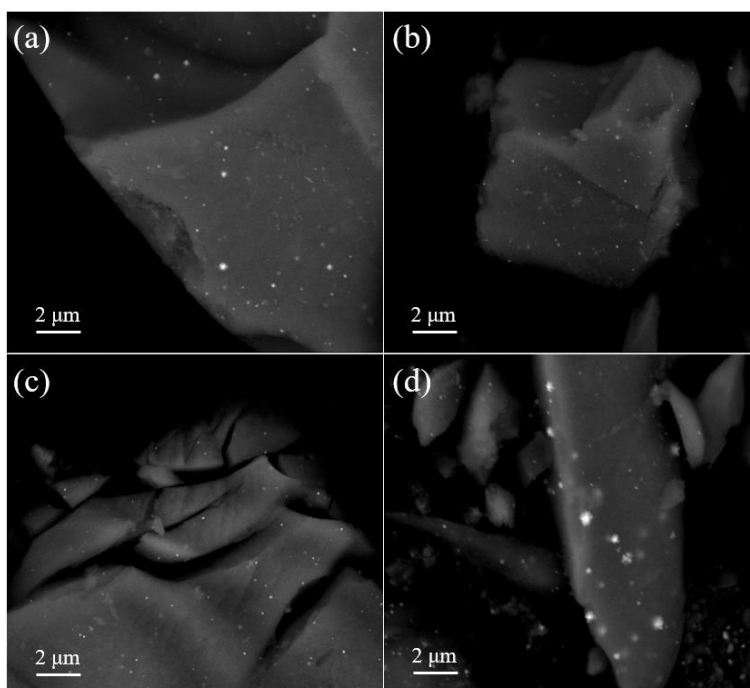


Figure S10. SEM-BSD images of reduced Pt/SiO₂.