

Supplementary Material

Enantioselective synthesis of C1-C4 and C5-C14 fragments of cytospolide D

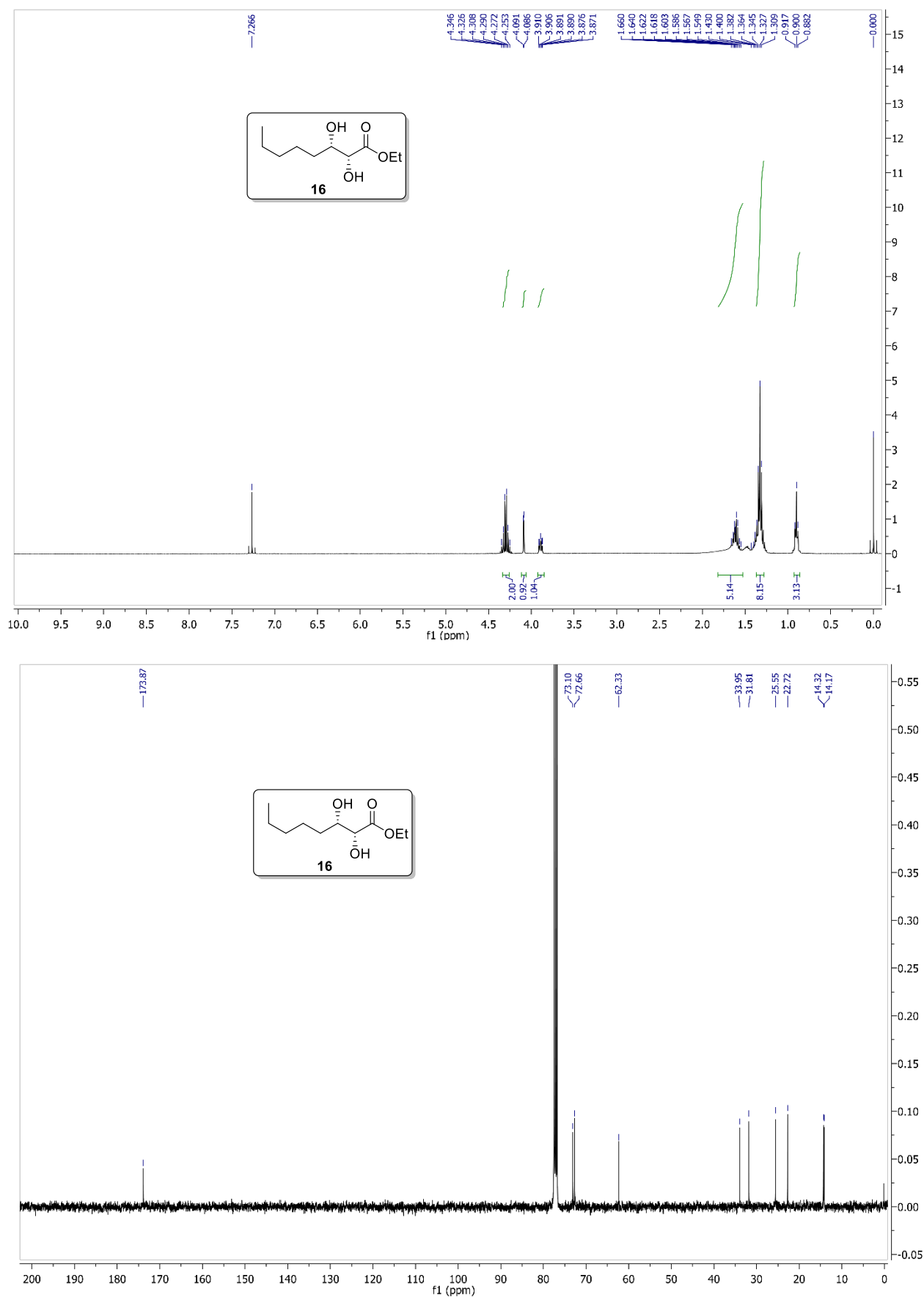
Amanpreet Kaur,^a Anju Gehlawat,^a Ranjana Prakash,^a and Satyendra Kumar Pandey*^{a,b}

^aSchool of Chemistry and Biochemistry, Thapar Institute of Engineering and Technology, Patiala-147 001, India ^bDepartment of Chemistry, Institute of Science, Banaras Hindu University, Varanasi-221 005, India

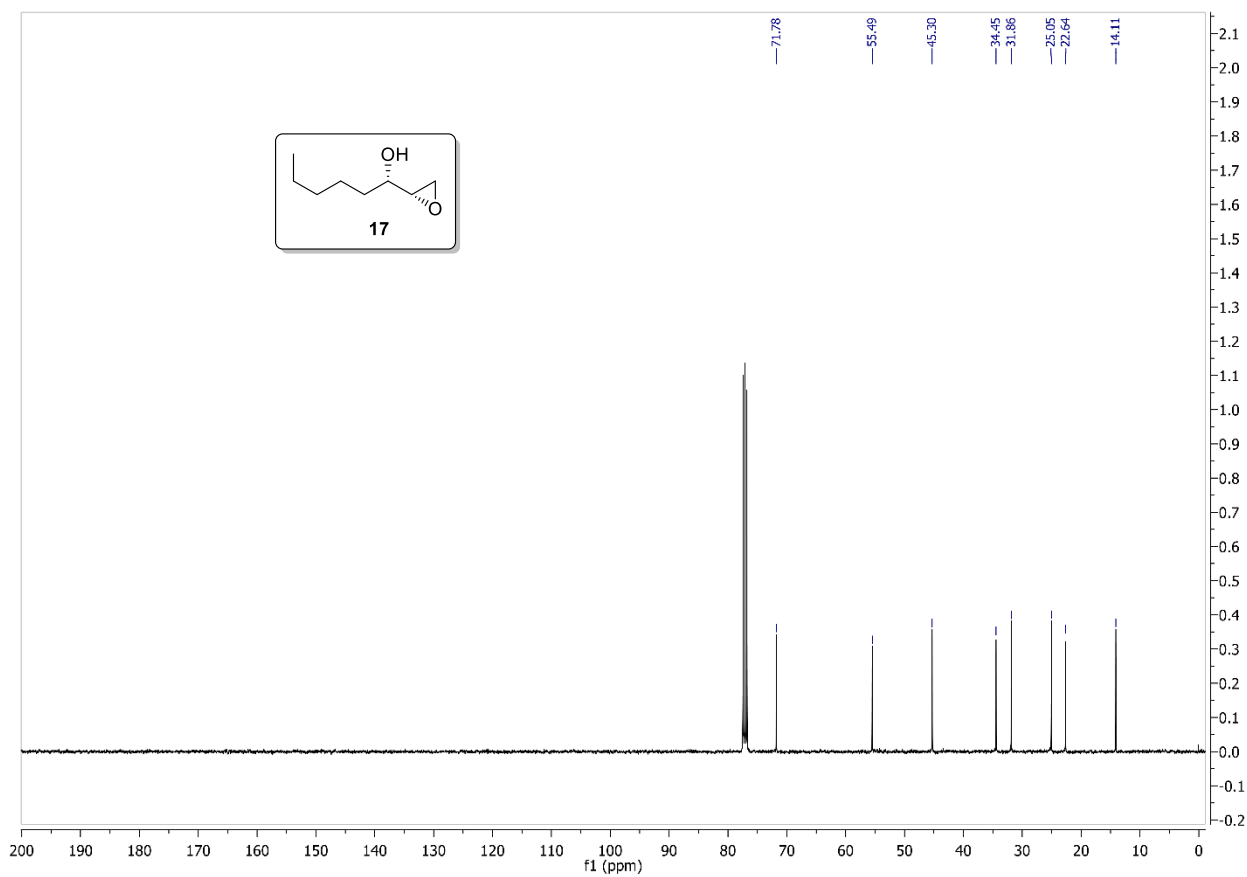
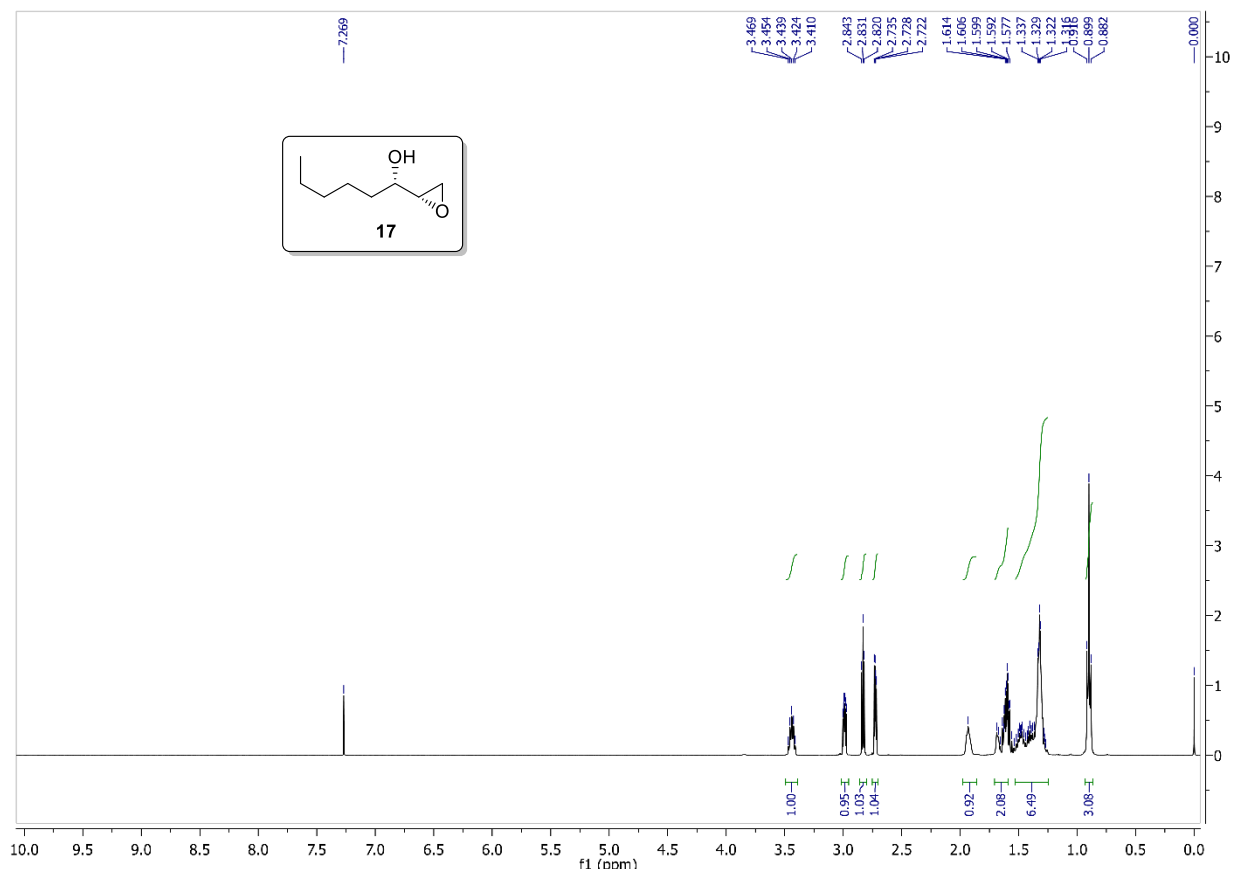
Email: skpandey@thapar.edu, skpandey.chem@bhu.ac.in

Table of Contents

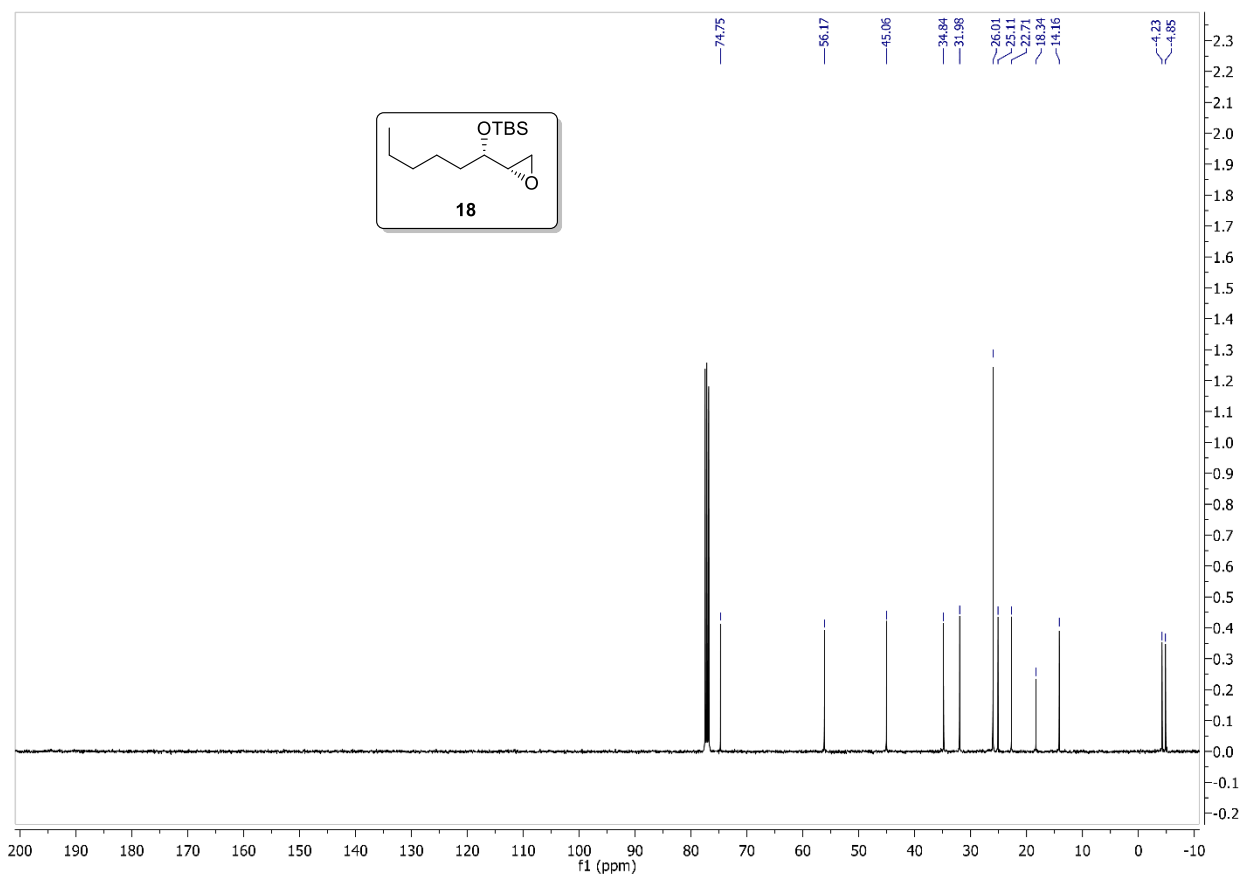
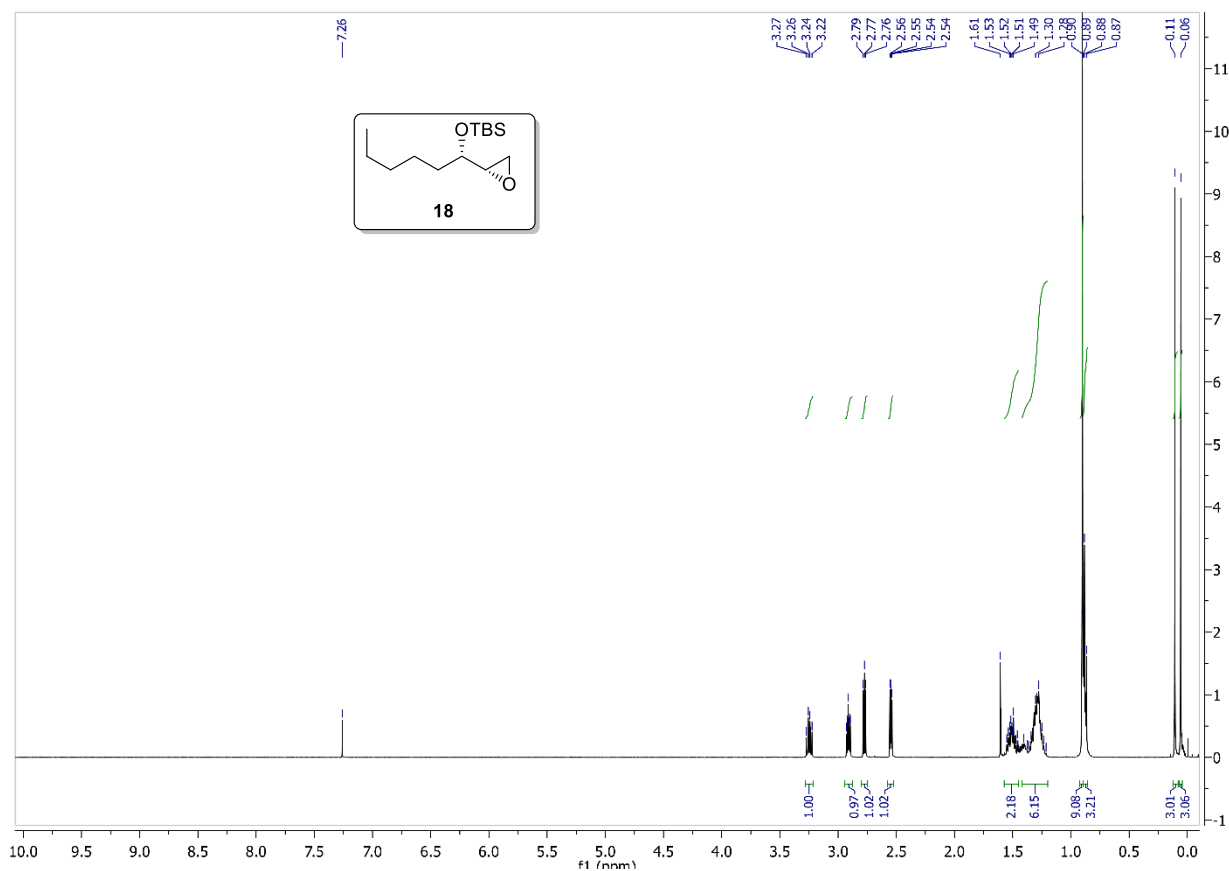
1. ¹ H and ¹³ C spectra for compound 16	S2
2. ¹ H and ¹³ C spectra for compound 17	S3
3. ¹ H and ¹³ C spectra for compound 18	S4
4. ¹ H and ¹³ C spectra for compound 19	S5
5. ¹ H and ¹³ C spectra for compound 20	S6
6. ¹ H and ¹³ C spectra for compound 11	S7
7. ¹ H and ¹³ C spectra for compound 11a	S8
8. ¹ H and ¹³ C spectra for compound 13	S9
9. HPLC data of compound 13	S10
10. ¹ H and ¹³ C spectra for compound 21	S12
11. ¹ H and ¹³ C spectra for compound 22	S13
12. ¹ H and ¹³ C spectra for compound 23	S14
13. ¹ H and ¹³ C spectra for compound 24	S15
14. ¹ H and ¹³ C spectra for compound 25	S16
15. ¹ H and ¹³ C spectra for compound 12	S17

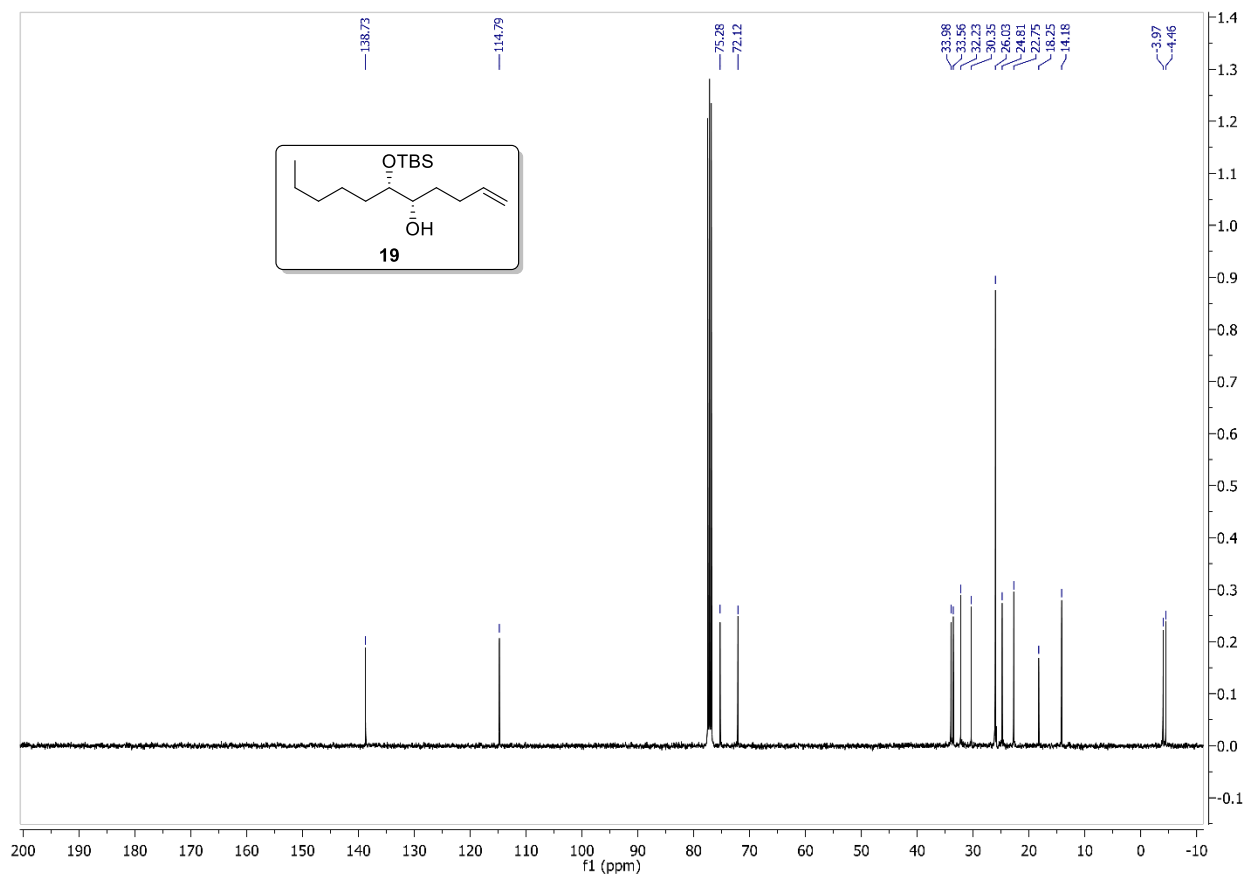
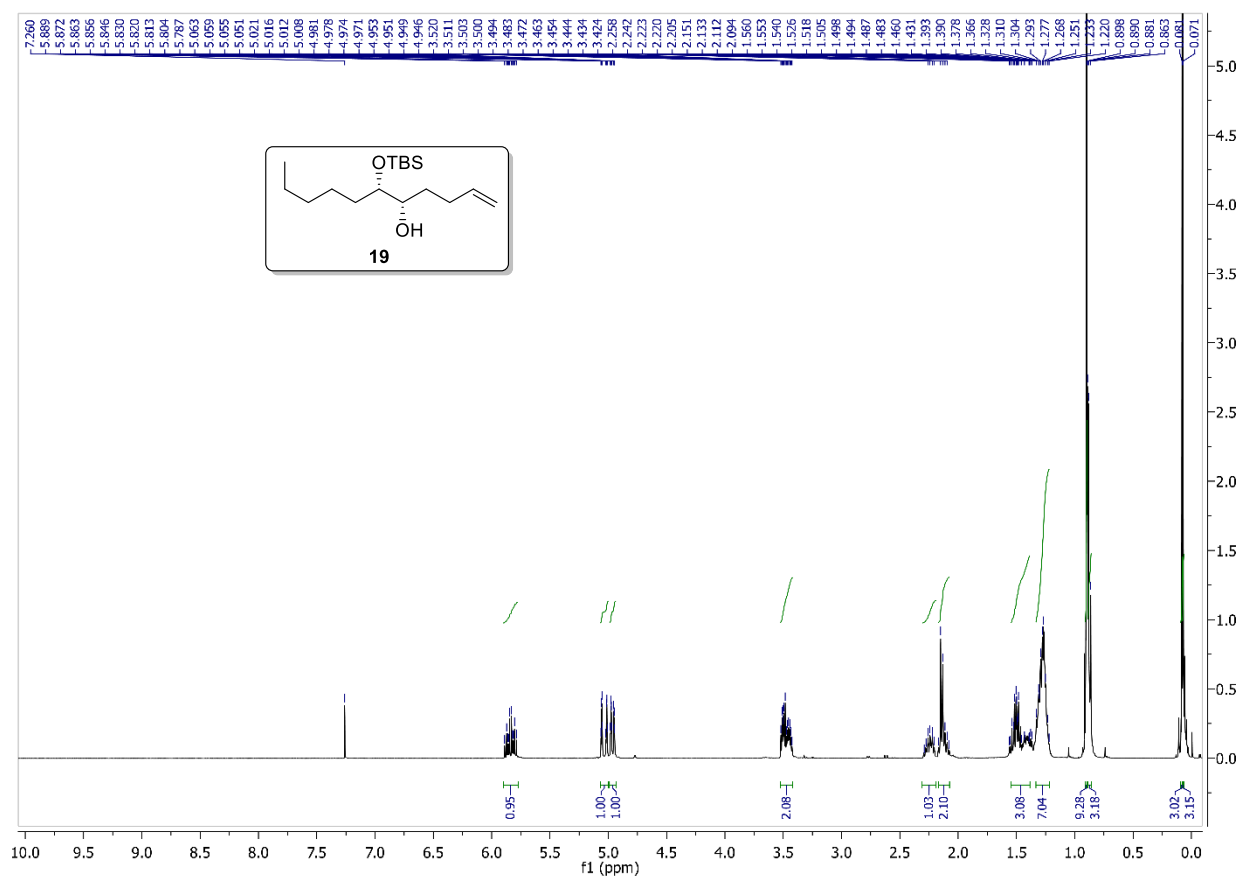
^1H NMR (400 MHz, CDCl_3) and ^{13}C NMR (100 MHz, CDCl_3), **16**

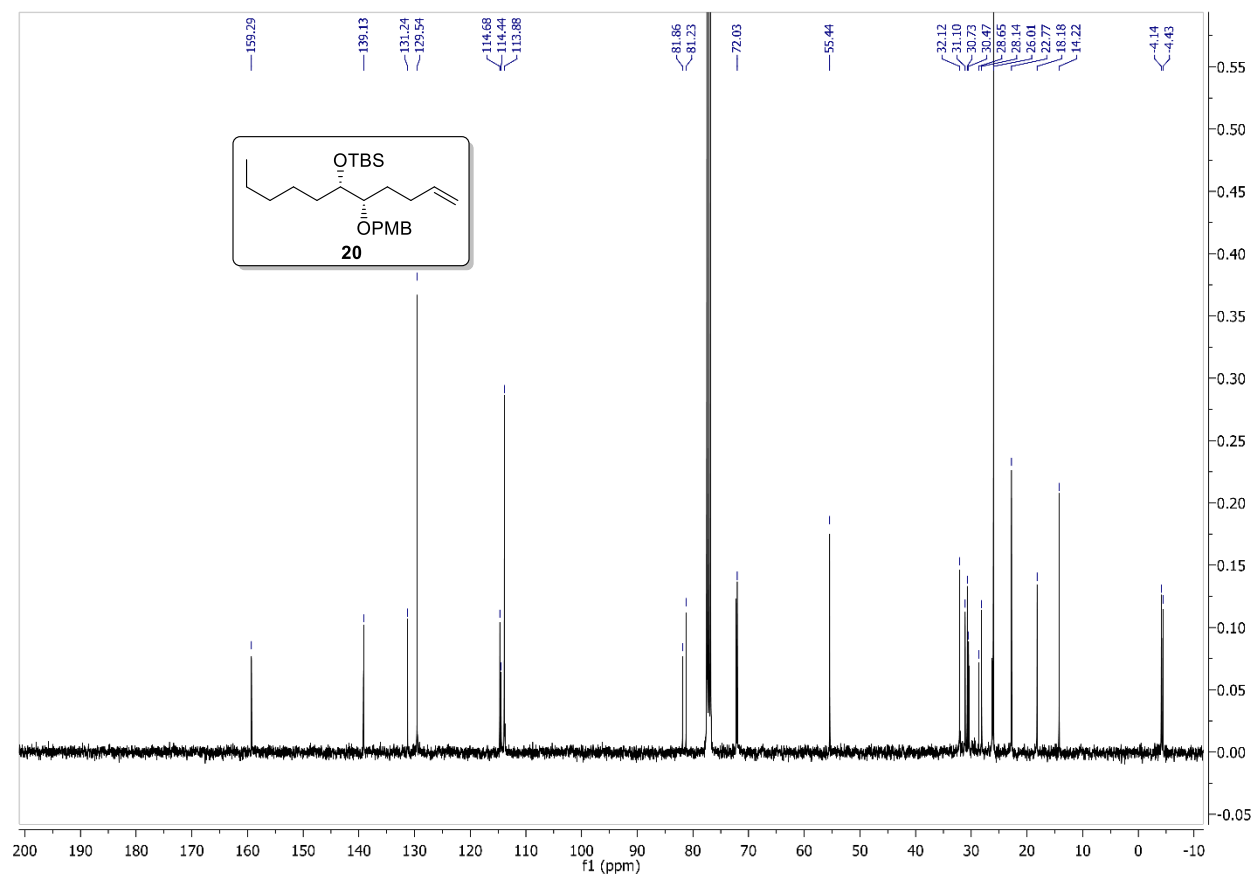
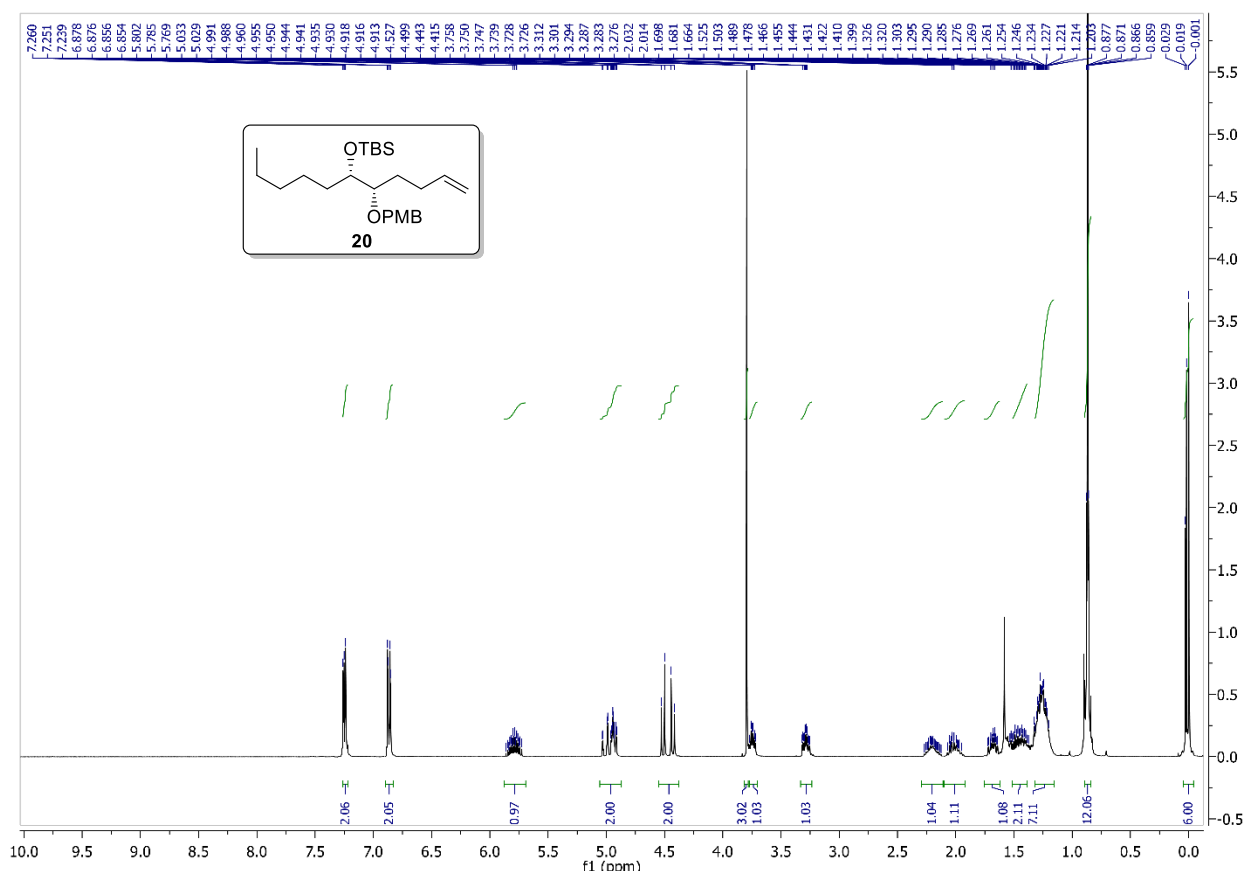
¹H NMR (400 MHz, CDCl₃) and ¹³C NMR (100 MHz, CDCl₃), **17**

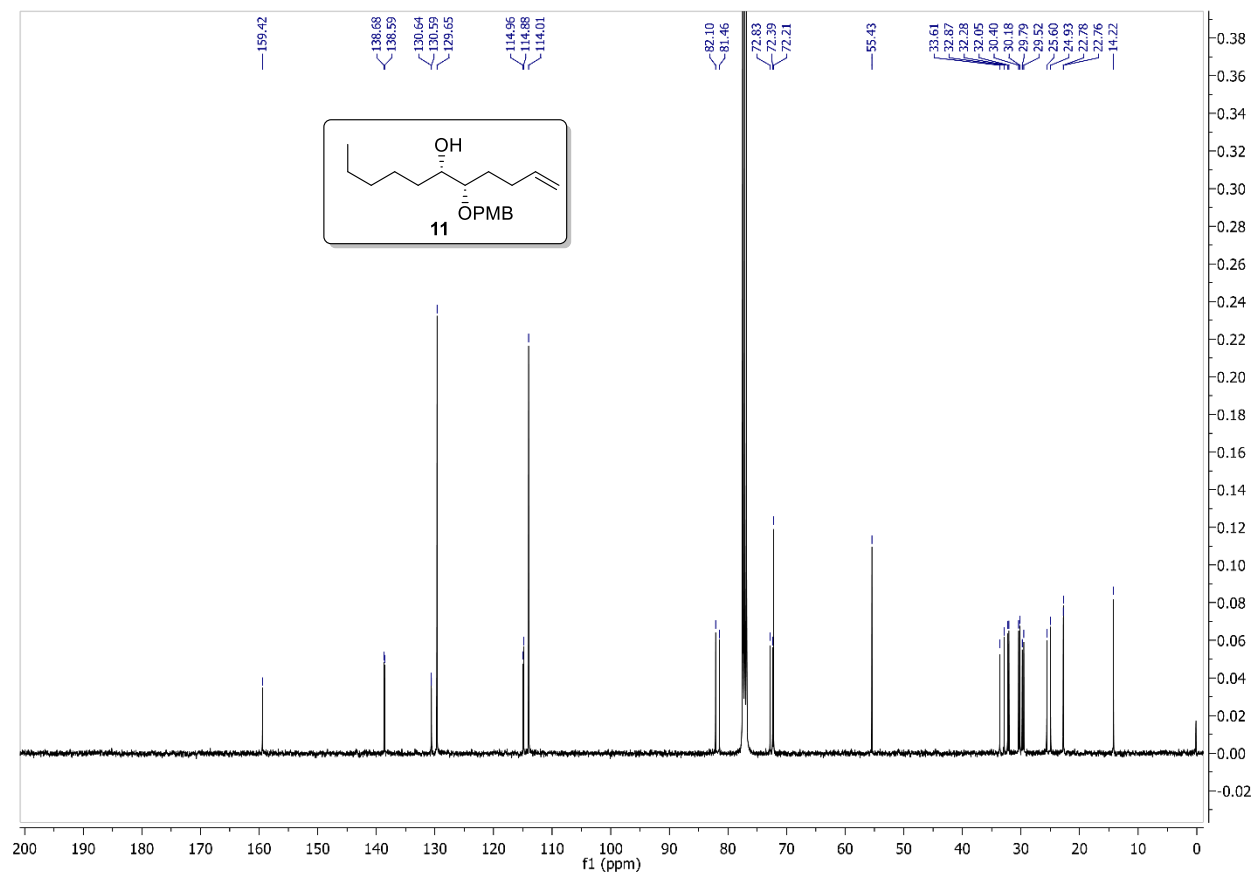
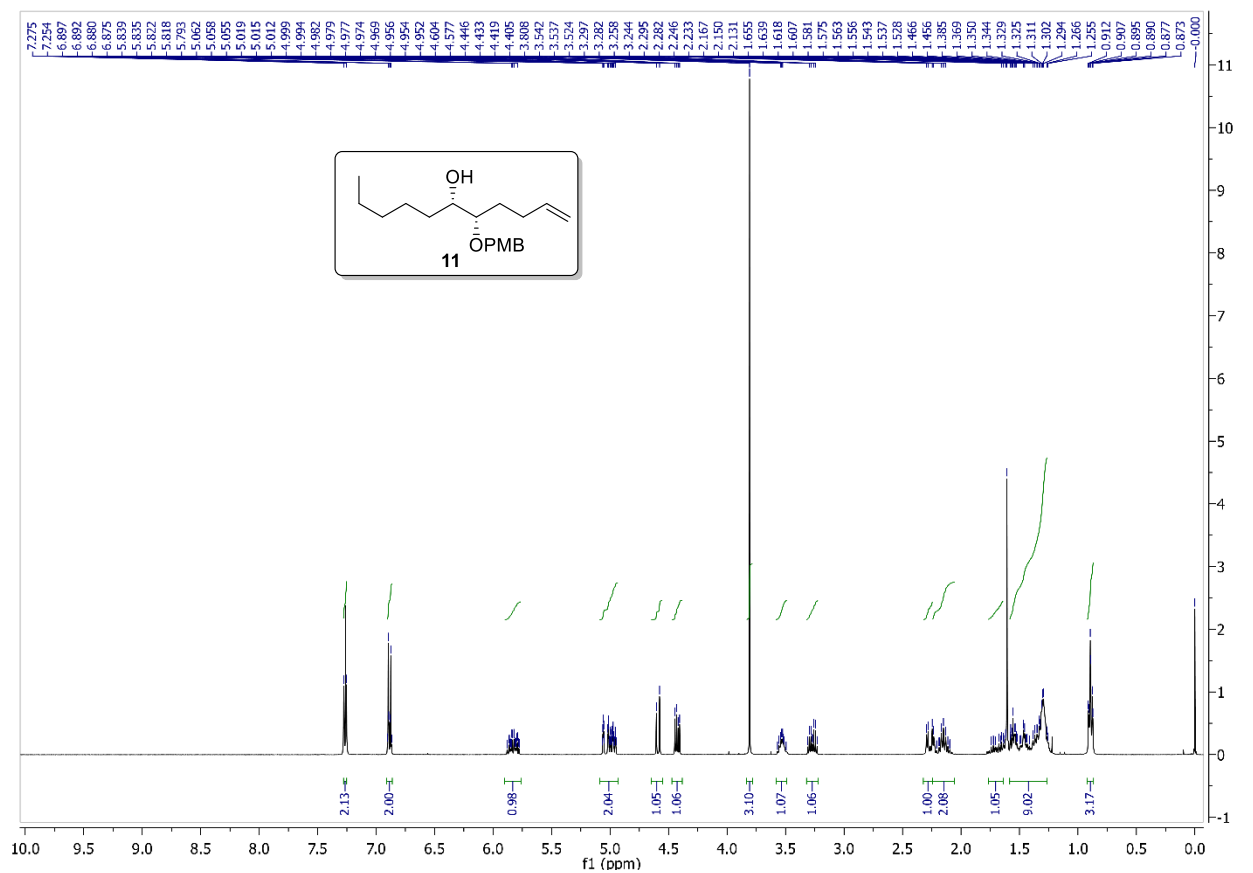


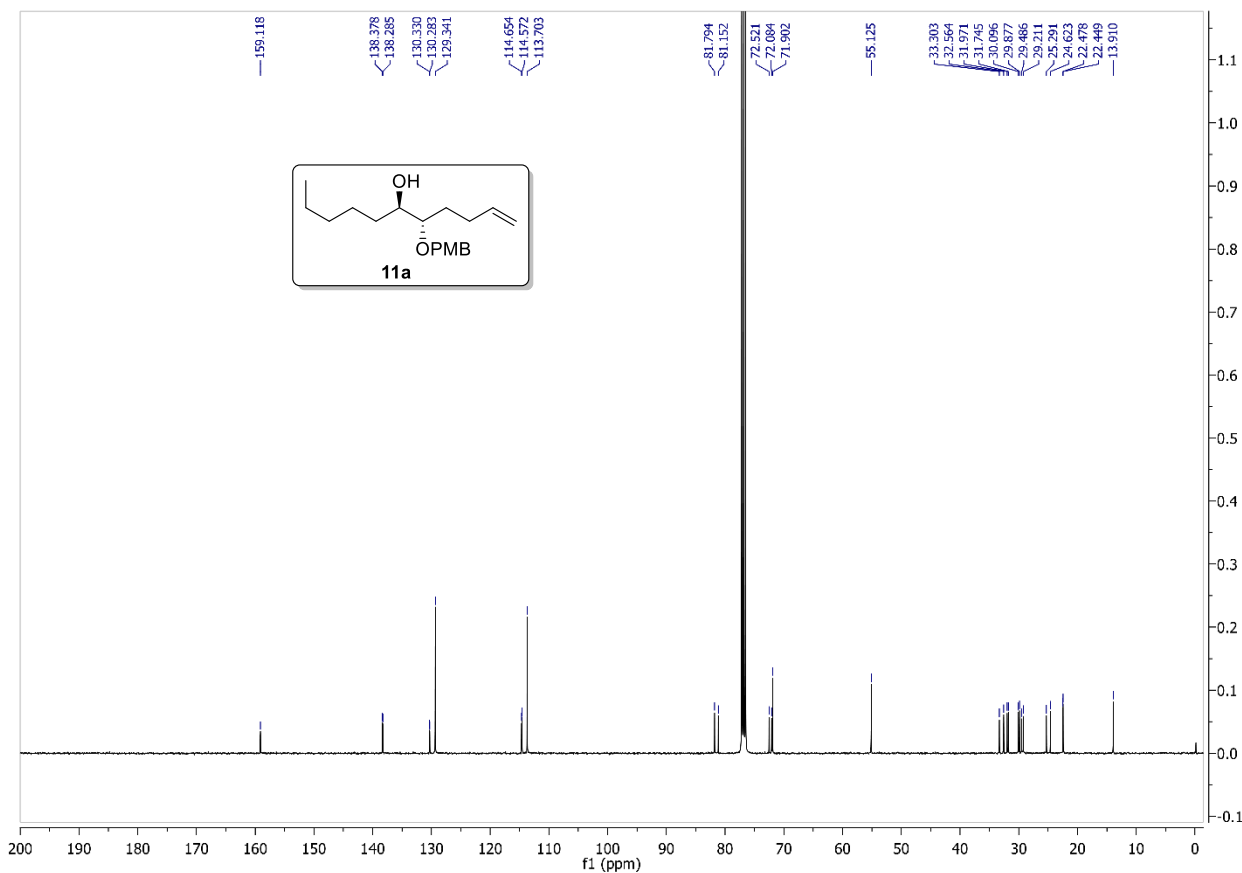
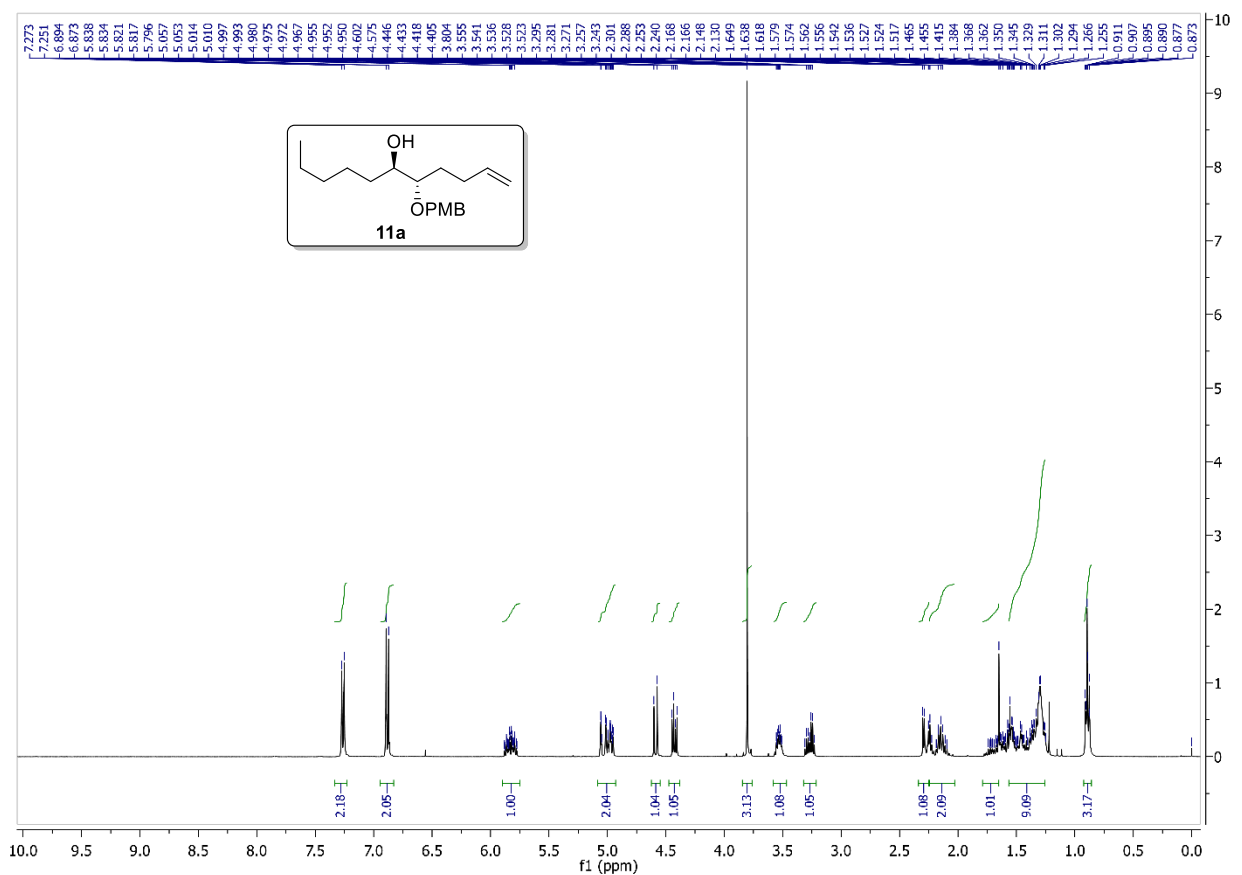
¹H NMR (400 MHz, CDCl₃) and ¹³C NMR (100 MHz, CDCl₃), **18**



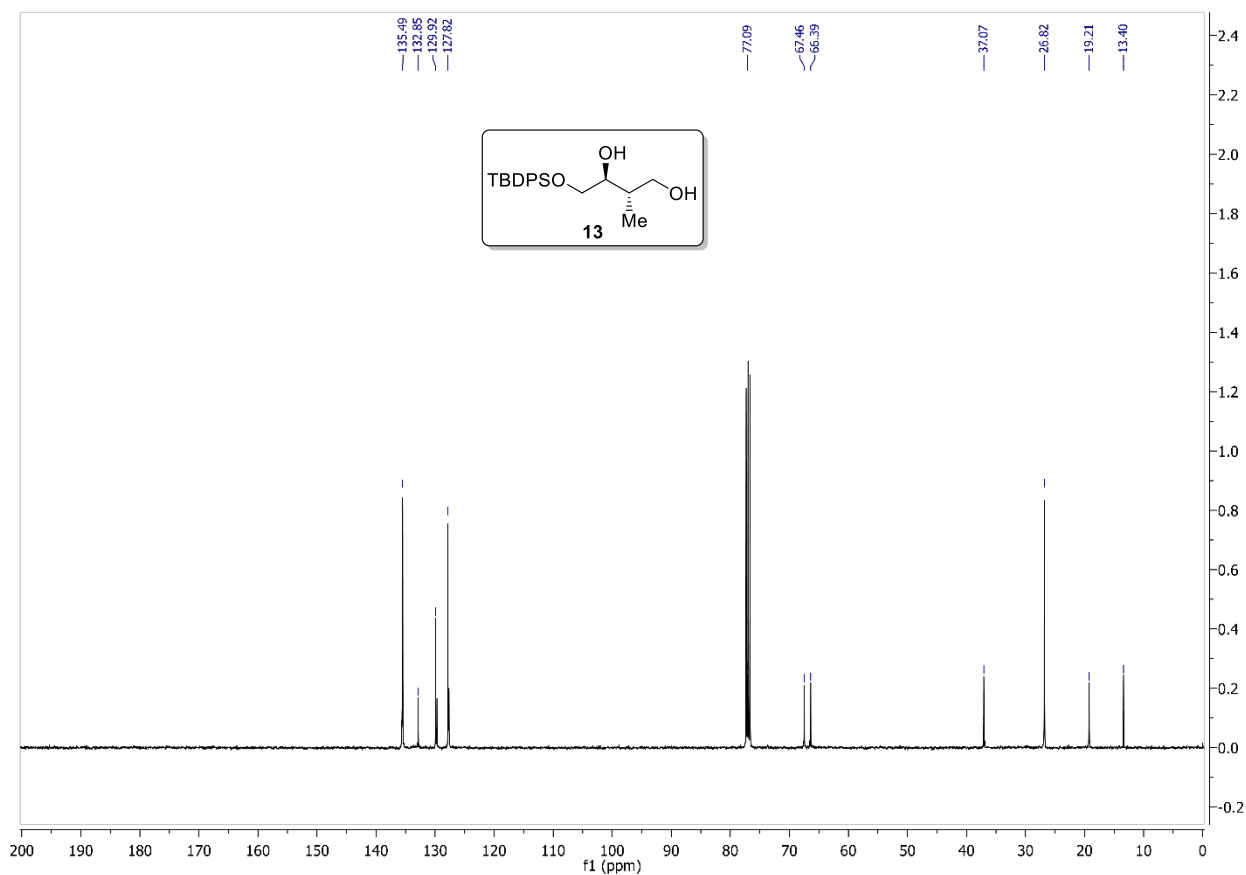
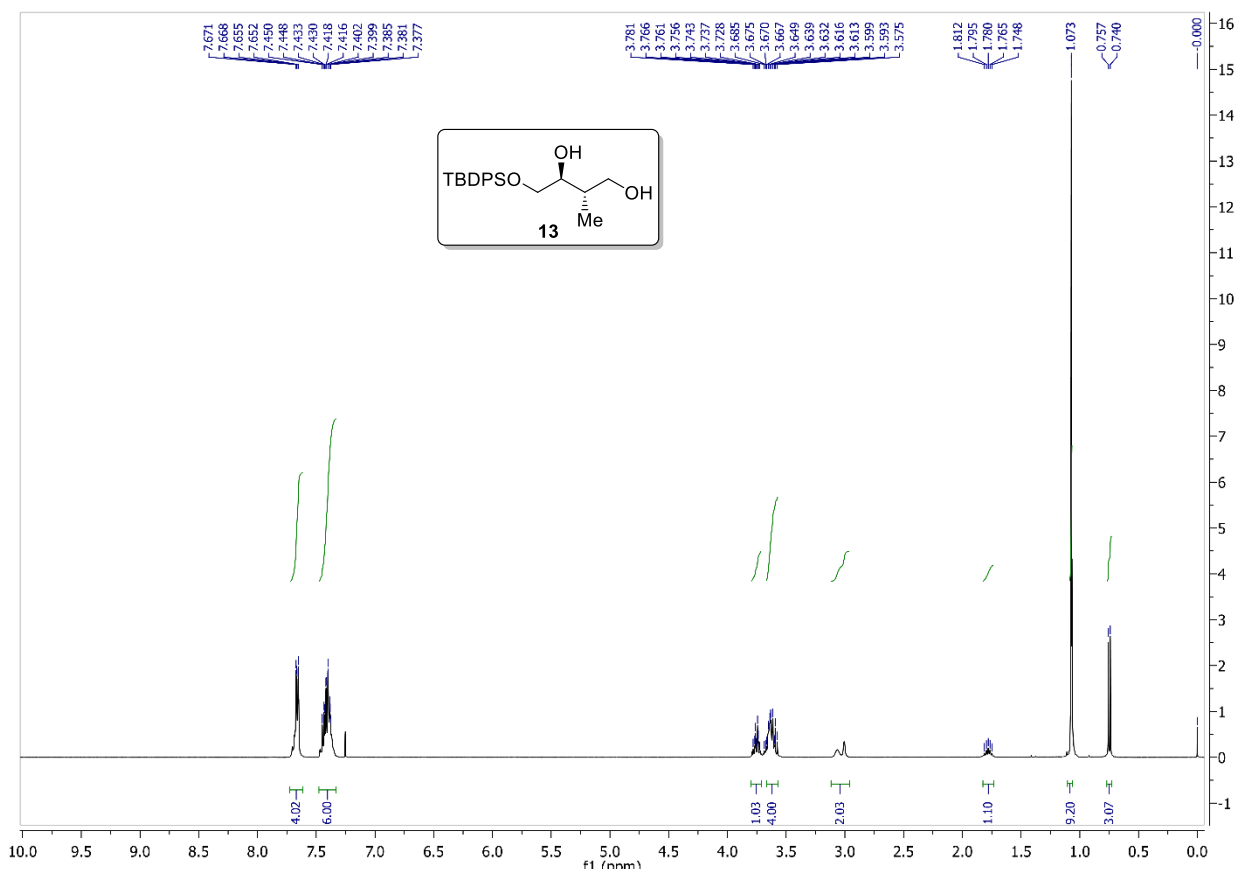
^1H NMR (400 MHz, CDCl_3) and ^{13}C NMR (100 MHz, CDCl_3), **19**

^1H NMR (400 MHz, CDCl_3) and ^{13}C NMR (100 MHz, CDCl_3), **20**

^1H NMR (400 MHz, CDCl_3) and ^{13}C NMR (100 MHz, CDCl_3), **11**

^1H NMR (400 MHz, CDCl_3) and ^{13}C NMR (100 MHz, CDCl_3), **11a**

¹H NMR (400 MHz, CDCl₃) and ¹³C NMR (101 MHz, CDCl₃), **13**



D-7000 HPLC System Manager Report

Analyzed: 08/11/17 04:48 PM

Reported: 08/11/17 05:11 PM
Processed: 08/11/17 05:10 PM

Data Path: C:\WIN32APP\HSM\HPLC\DATA\9707\

Processing Method: cal

System(acquisition): Sys 1

Series:9707

Application: HPLC

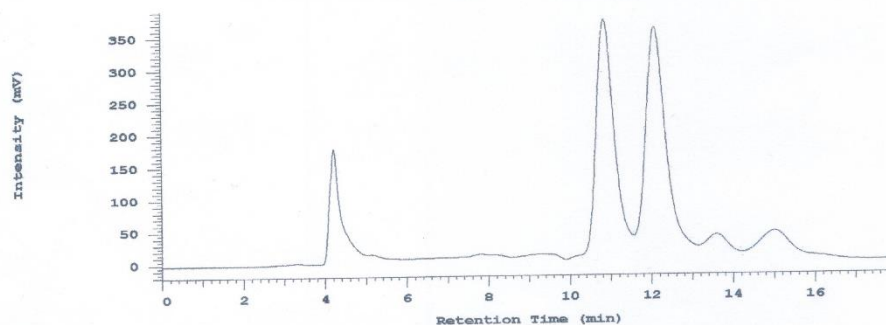
Volume: 10.0 ul

Sample Name: GSG-F-603(Rac)

Injection from this vial: 1 of 1

Sample Description: PE:EtOH(99:01)

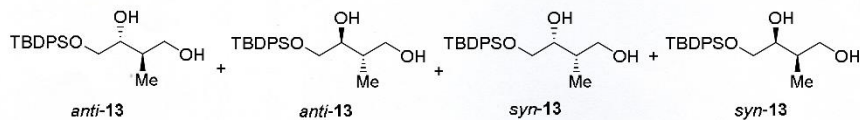
Chrom Type: HPLC Channel : 1



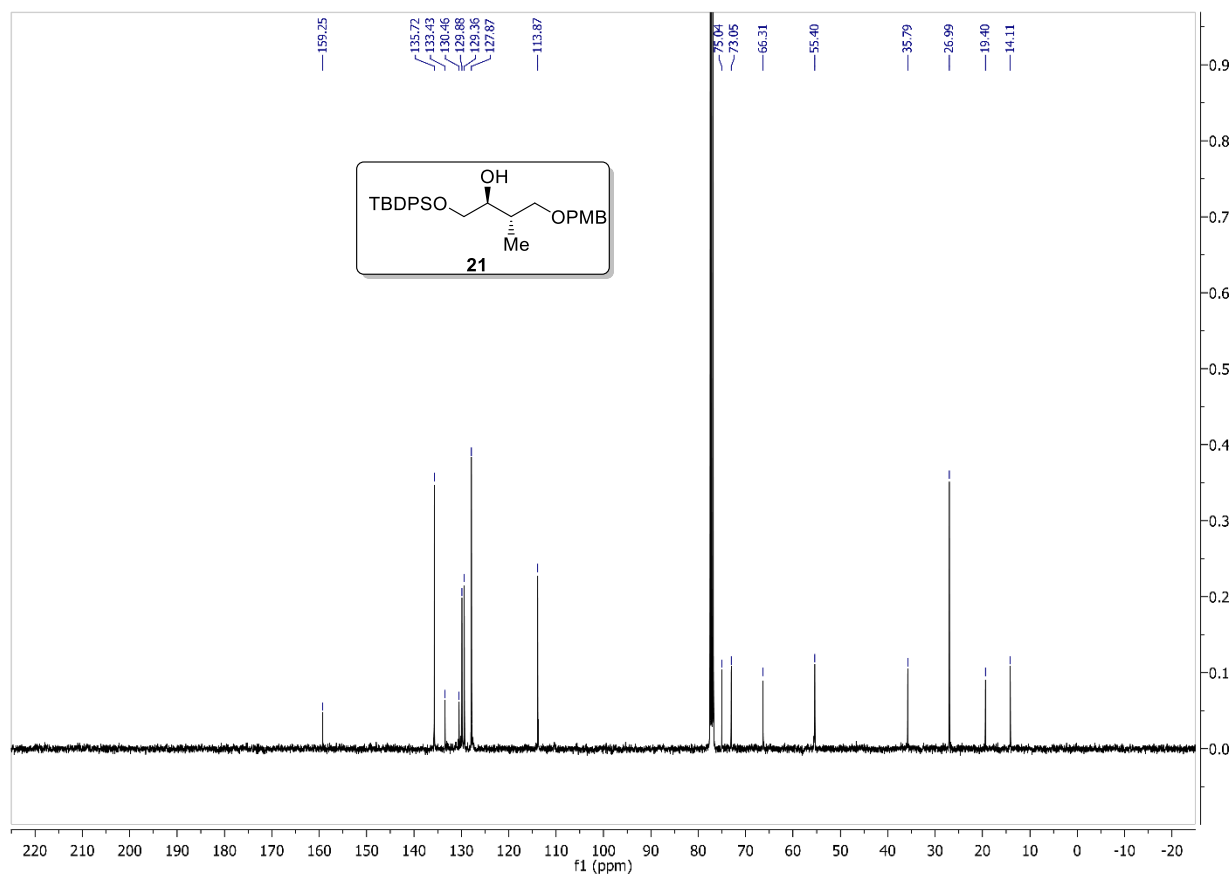
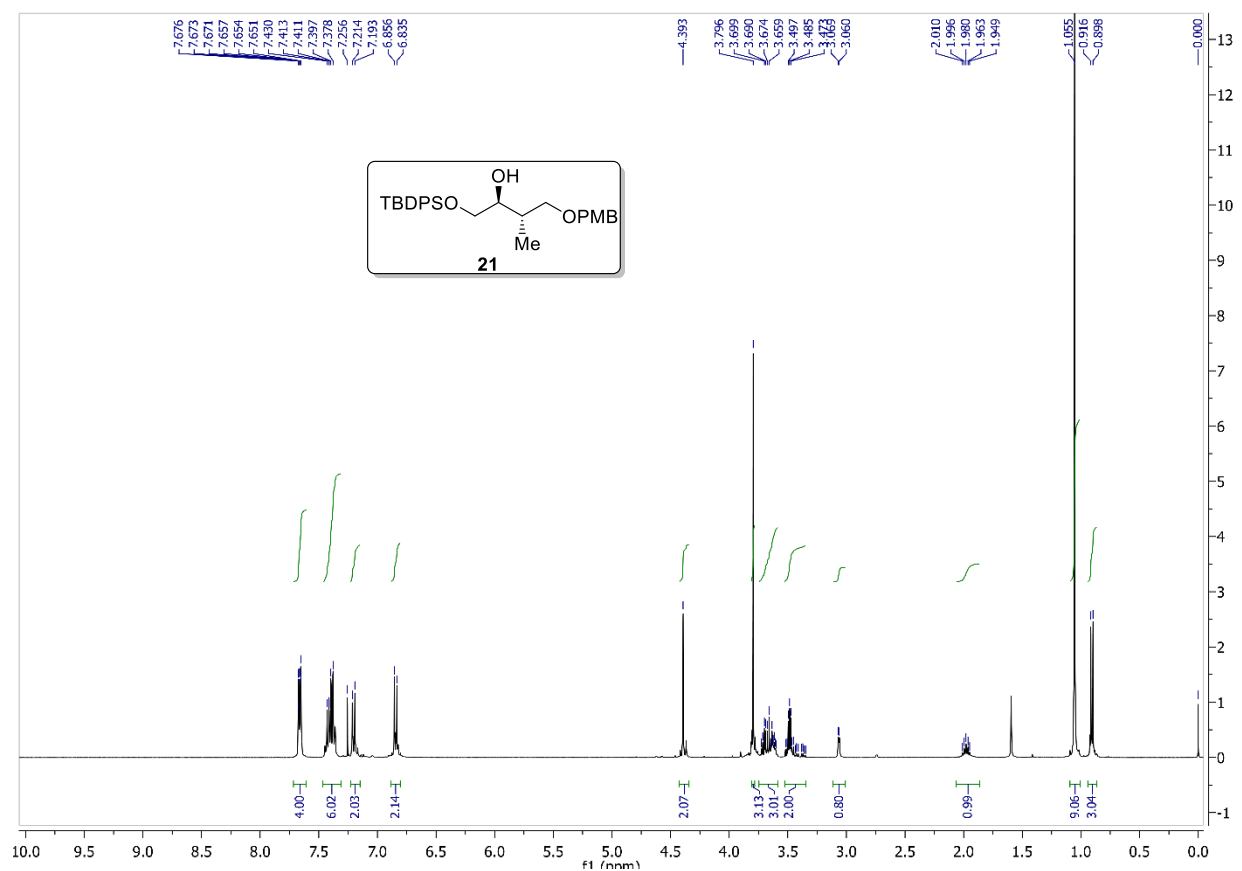
No.	RT	Area	Conc 1	BC
1	10.86	11104613	42.633	BV
2	12.10	12794077	49.119	VV
3	13.59	640402	2.459	TBB
4	15.01	1507989	5.789	VB
		26047081	100.000	

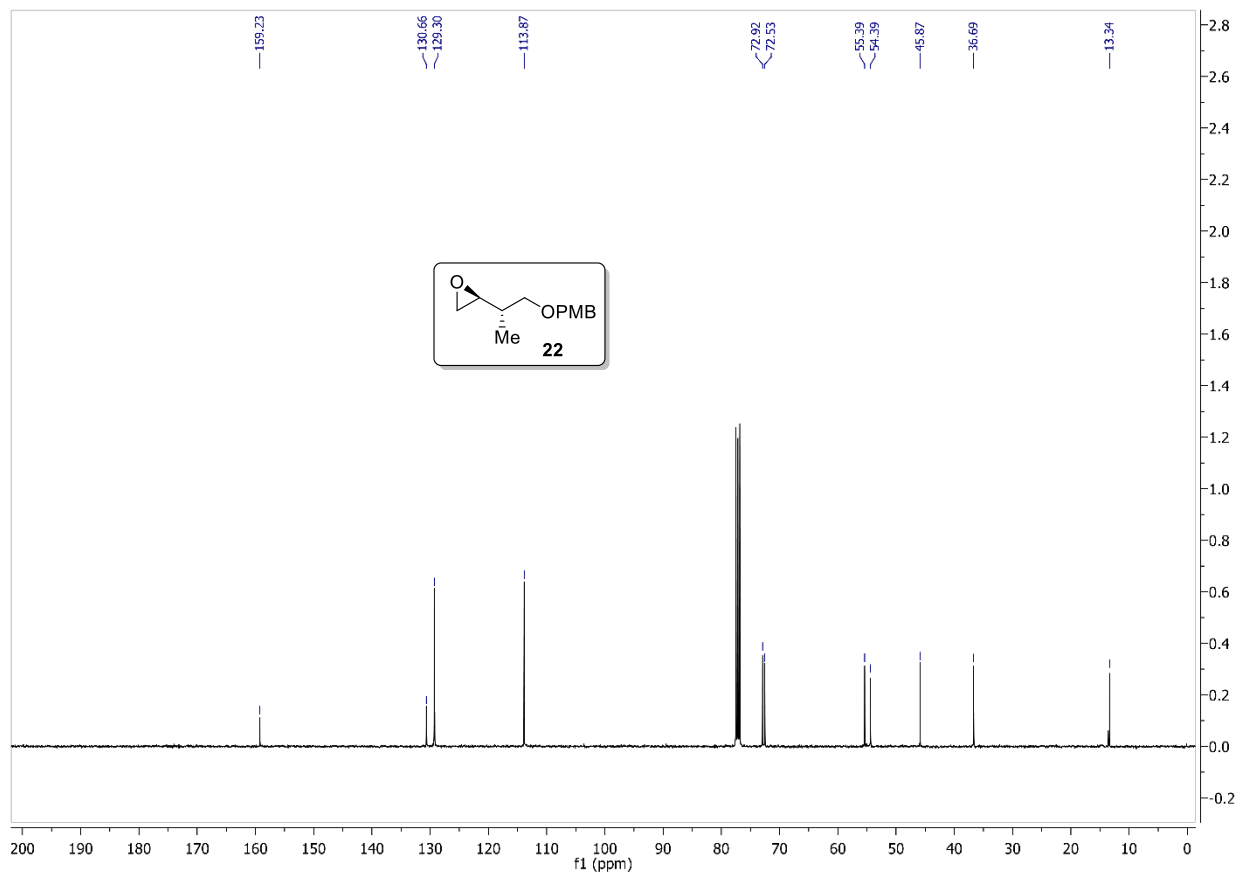
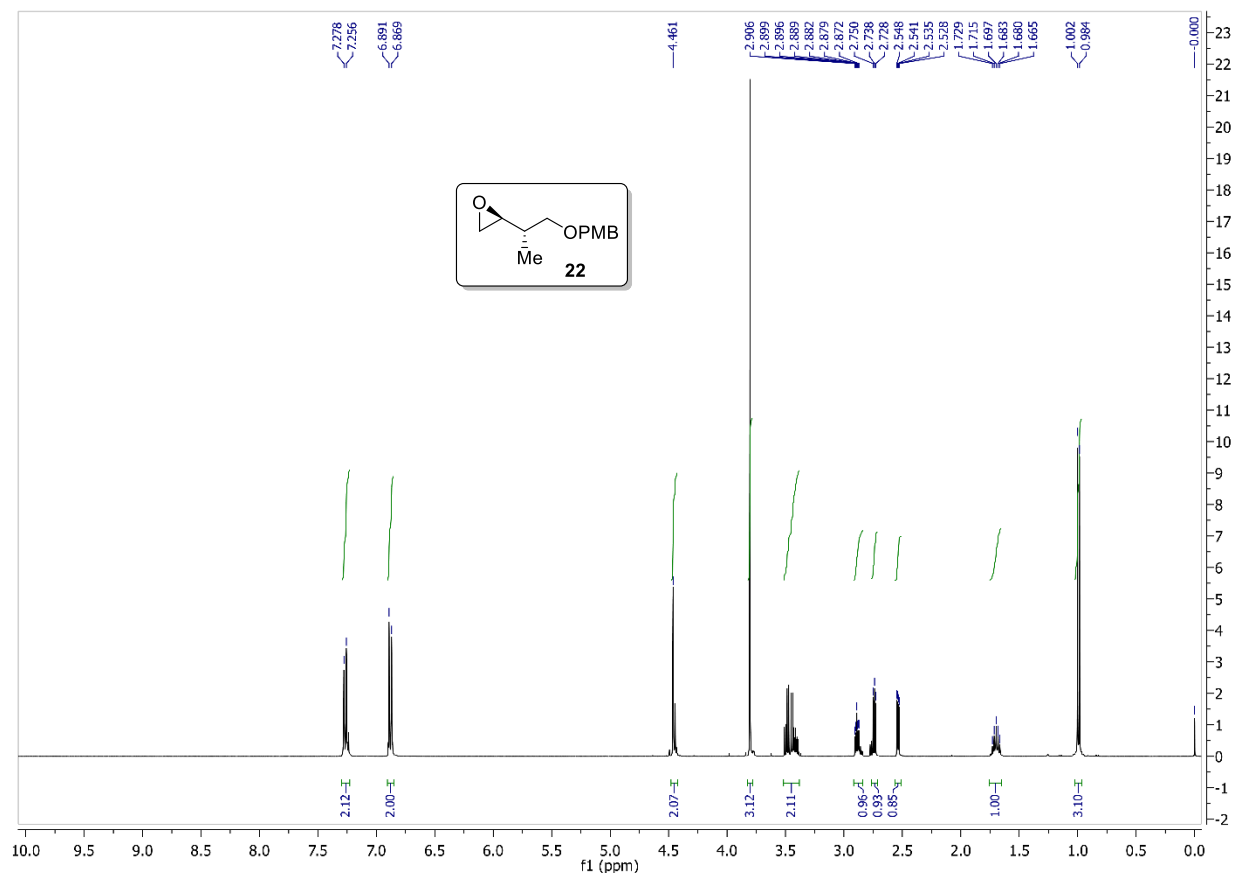
Peak rejection level: 0

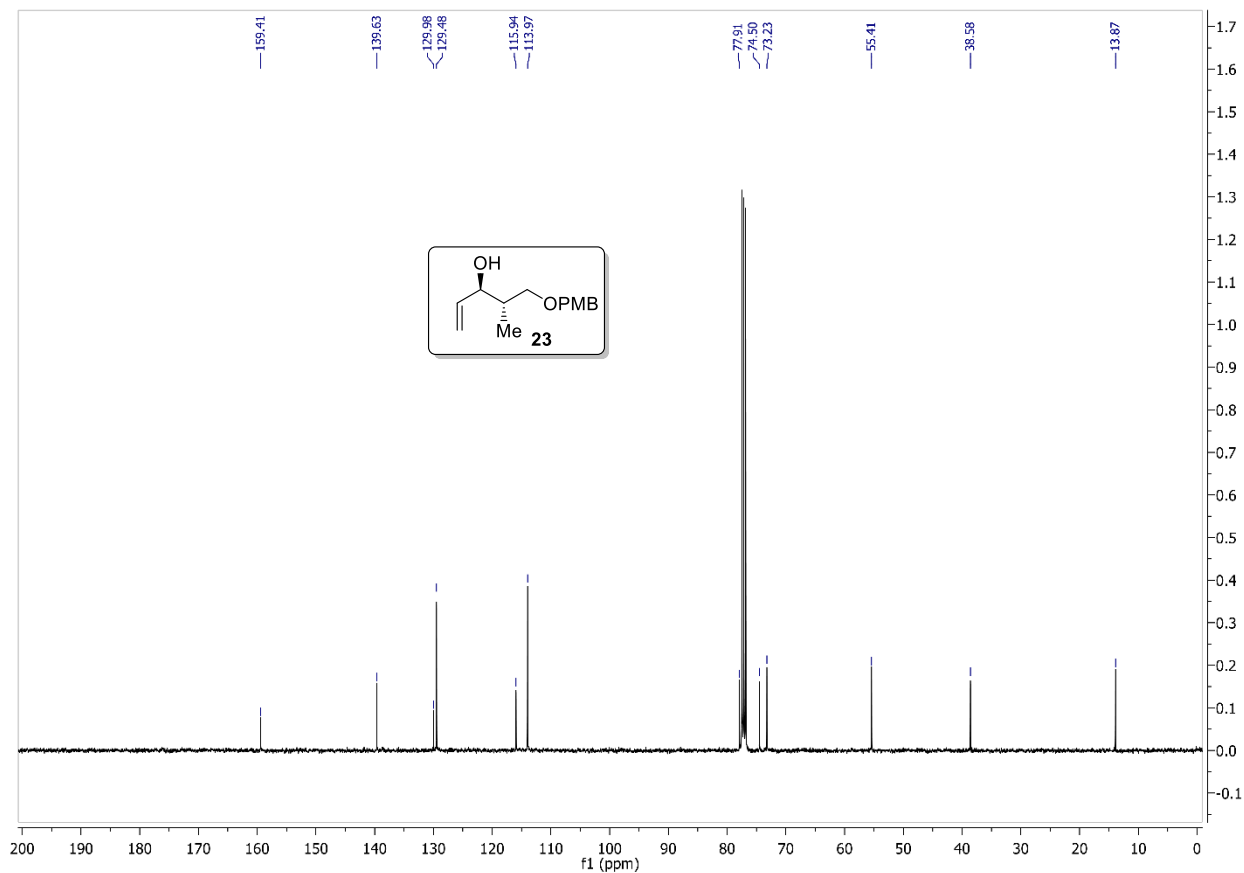
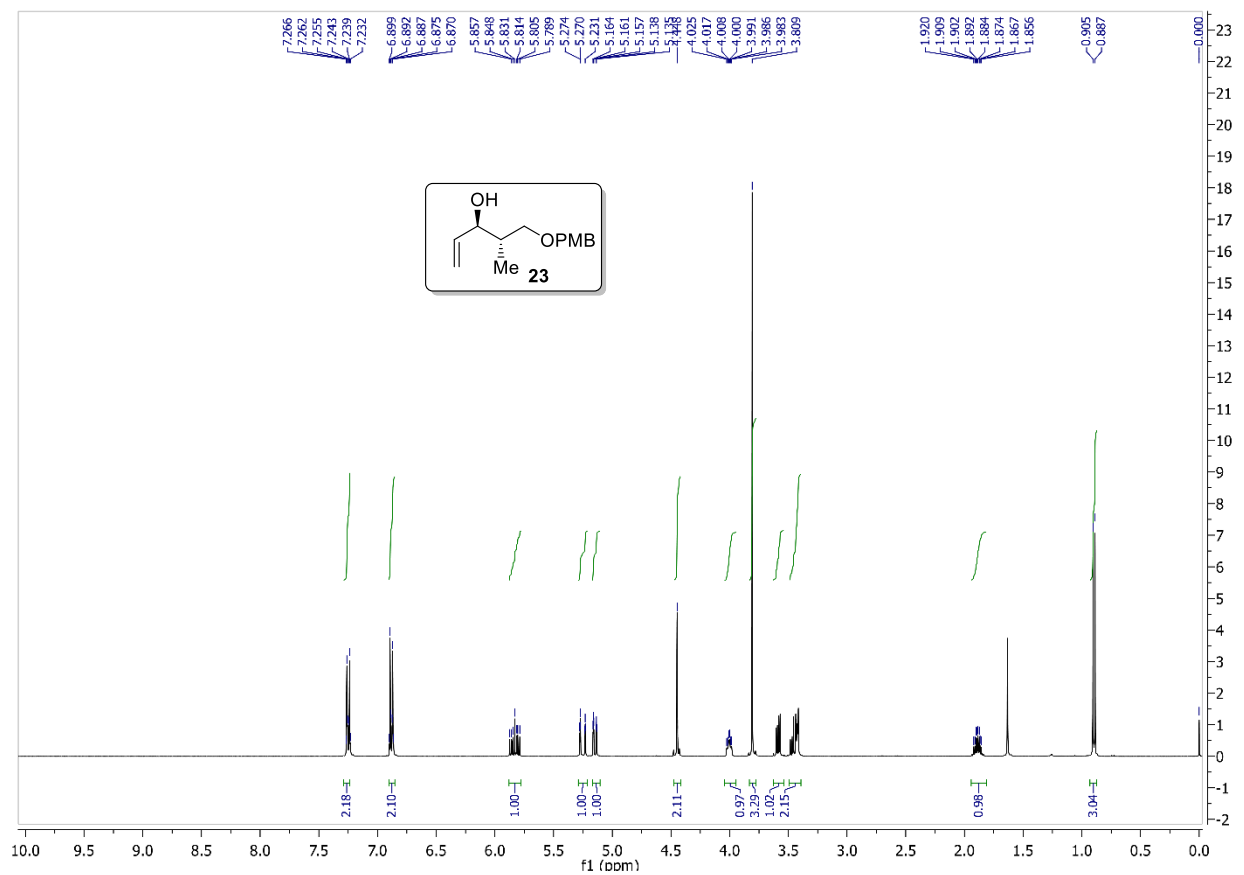
A1 (Racemic)

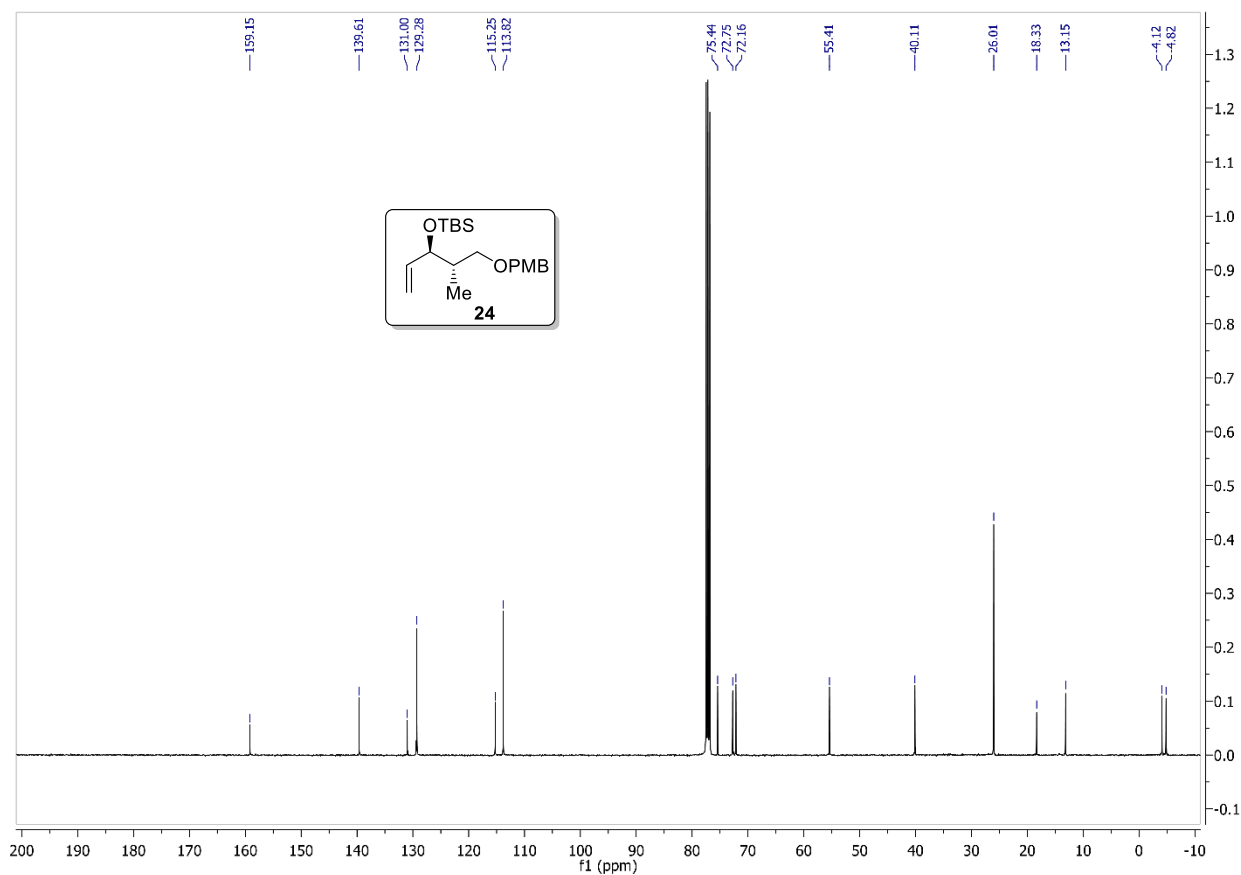
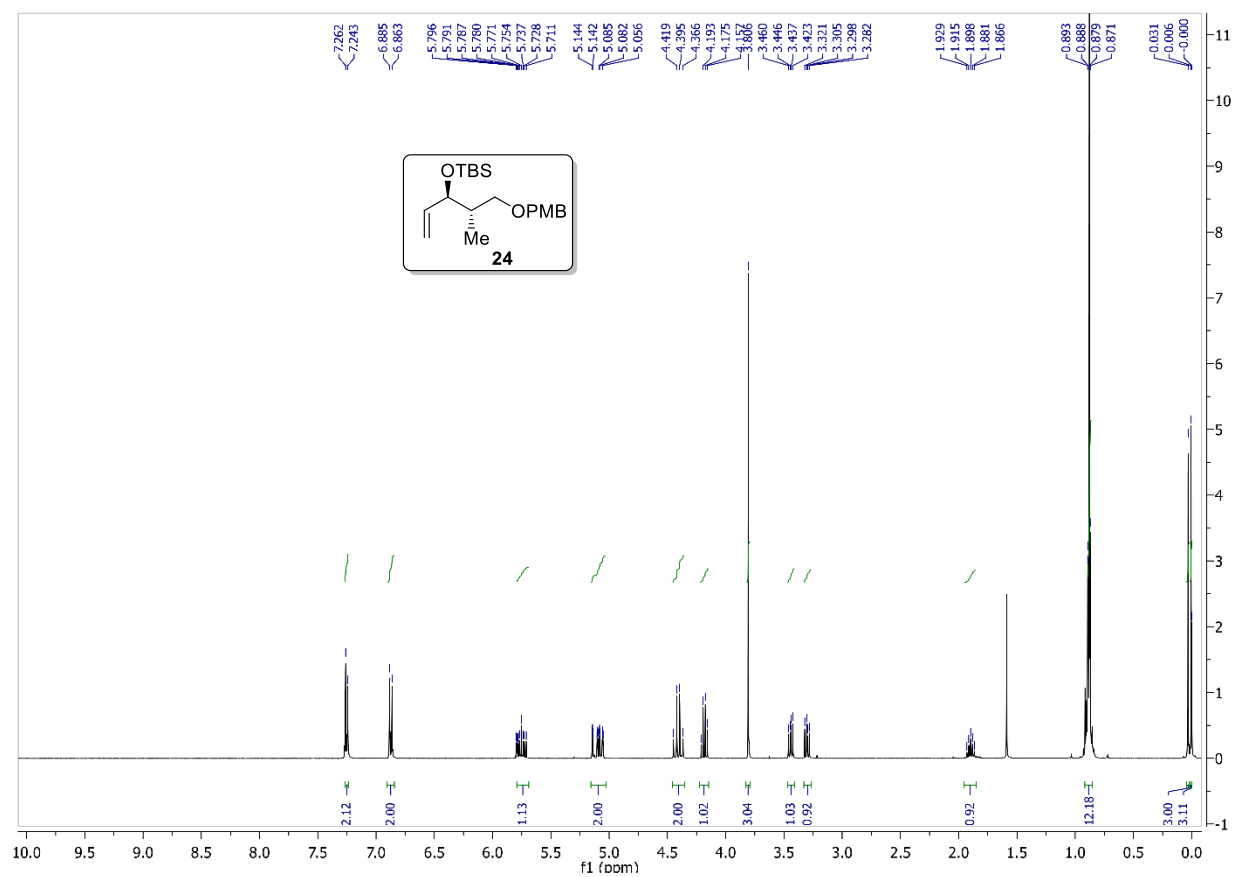


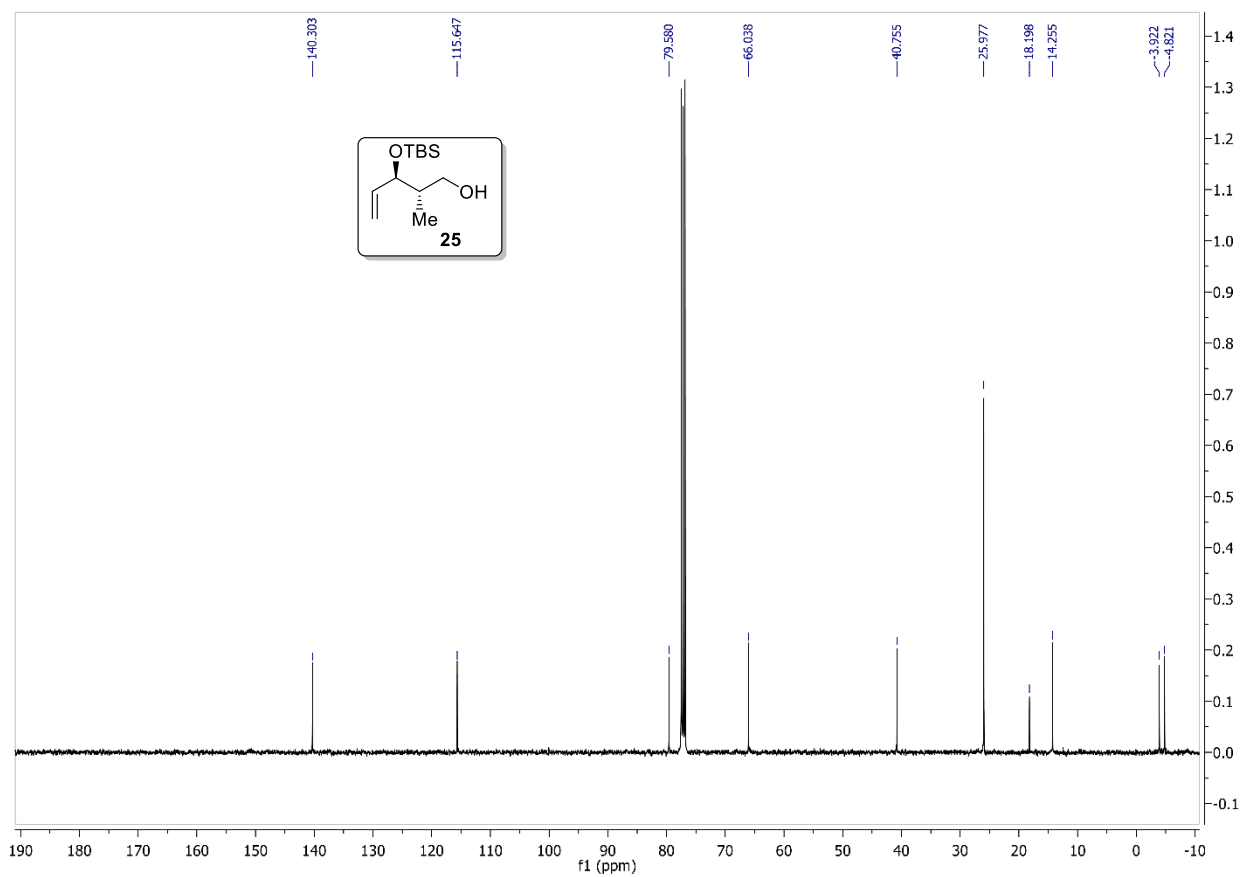
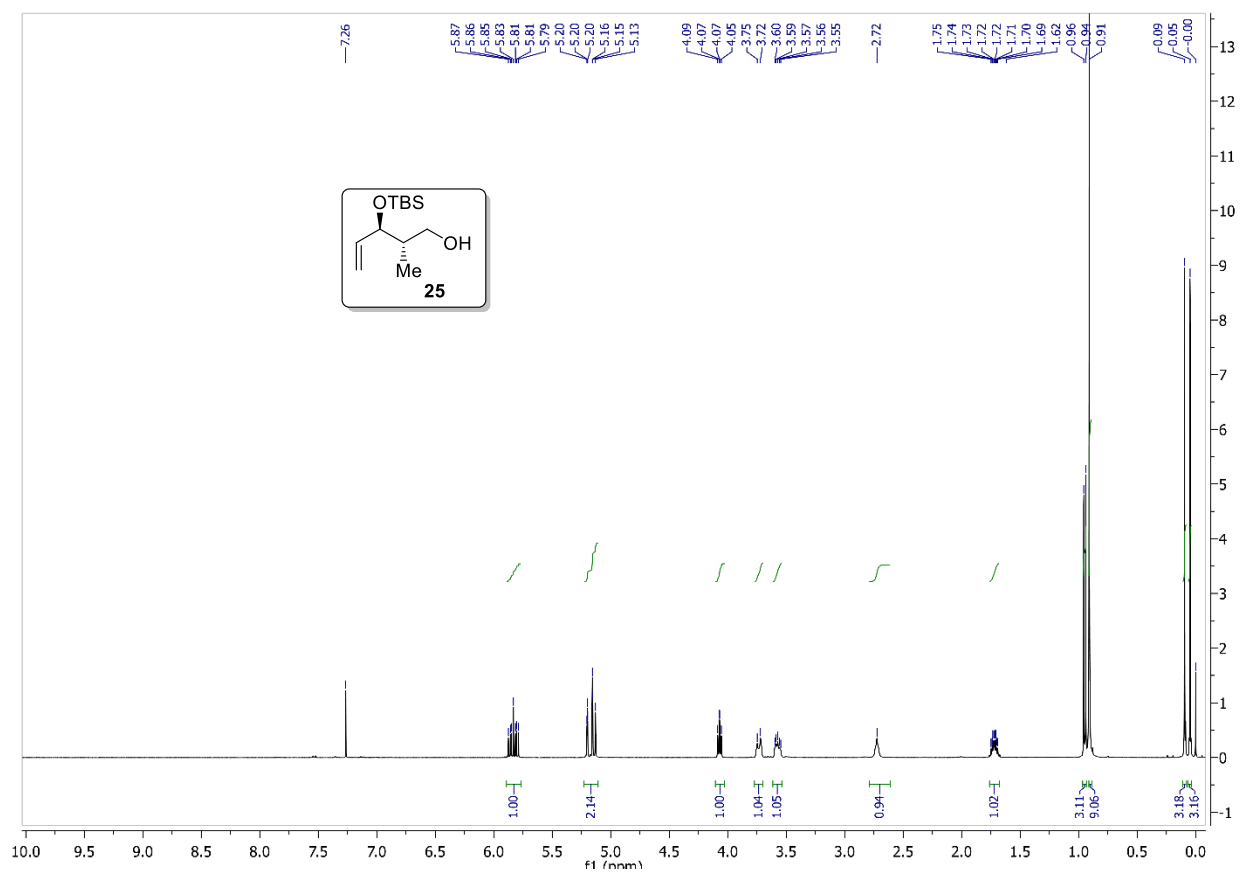
Project Leader: Dr.M.Muthukrishnan
 Column :Chiralcel OD-H(250 mmx4.6mm)
 Mobile Ph : EtOH:PE(01:99)
 Wavelength : 220nm
 Flow : 1.0 ml/min.
 Inject vol: 2ul

^1H NMR (400 MHz, CDCl_3) and ^{13}C NMR (100 MHz, CDCl_3), **21**

^1H NMR (400 MHz, CDCl_3) and ^{13}C NMR (100 MHz, CDCl_3), **22**

^1H NMR (400 MHz, CDCl_3) and ^{13}C NMR (100 MHz, CDCl_3), **23**

^1H NMR (400 MHz, CDCl_3) and ^{13}C NMR (100 MHz, CDCl_3), **24**

^1H NMR (400 MHz, CDCl_3) and ^{13}C NMR (100 MHz, CDCl_3), **25**

^1H NMR (400 MHz, CDCl_3) and ^{13}C NMR (100 MHz, CDCl_3), **12**