

Supplementary Material

Striking difference in reactivity of trienes and oximes derived from glucose and xylose

Jarosław Jaźwinski,^a Paweł Łata,^b Karolina Tiara,^a and Sławomir Jarosz^{a*}

^a Institute of Organic Chemistry, Polish Academy of Sciences, Kasprzaka 44/52, 01-224 Warsaw, Poland

^b Institute of Physical Chemistry, Polish Academy of Sciences, Kasprzaka 44/52, 01-224 Warsaw, Poland

Email: slawomir.jarosz@icho.edu.pl

Table of Contents

Figure 1S. Selected MO for 2	S2
Figure 2S. Selected MO for 7	S3
Figure 3S. Selected MO for two conformers of 11 , <i>s-cis</i> (a) and <i>s-trans</i> (b)	S4
Figure 4S. Some MO for 13	S5
Figure 5S. Some molecular orbitals for 14	S6

Calculations of molecular orbitals (MO) were performed by the Gaussian 09 program suite, at the B3LYP/6-311G(2d,p) theory level, using B3LYP/6-31G(2d,p) optimized compound structures. Conformations of compounds were selected arbitrarily. Numbering plan of orbitals, as well as their energy (a.u.), was given as provided by the Gaussian software.

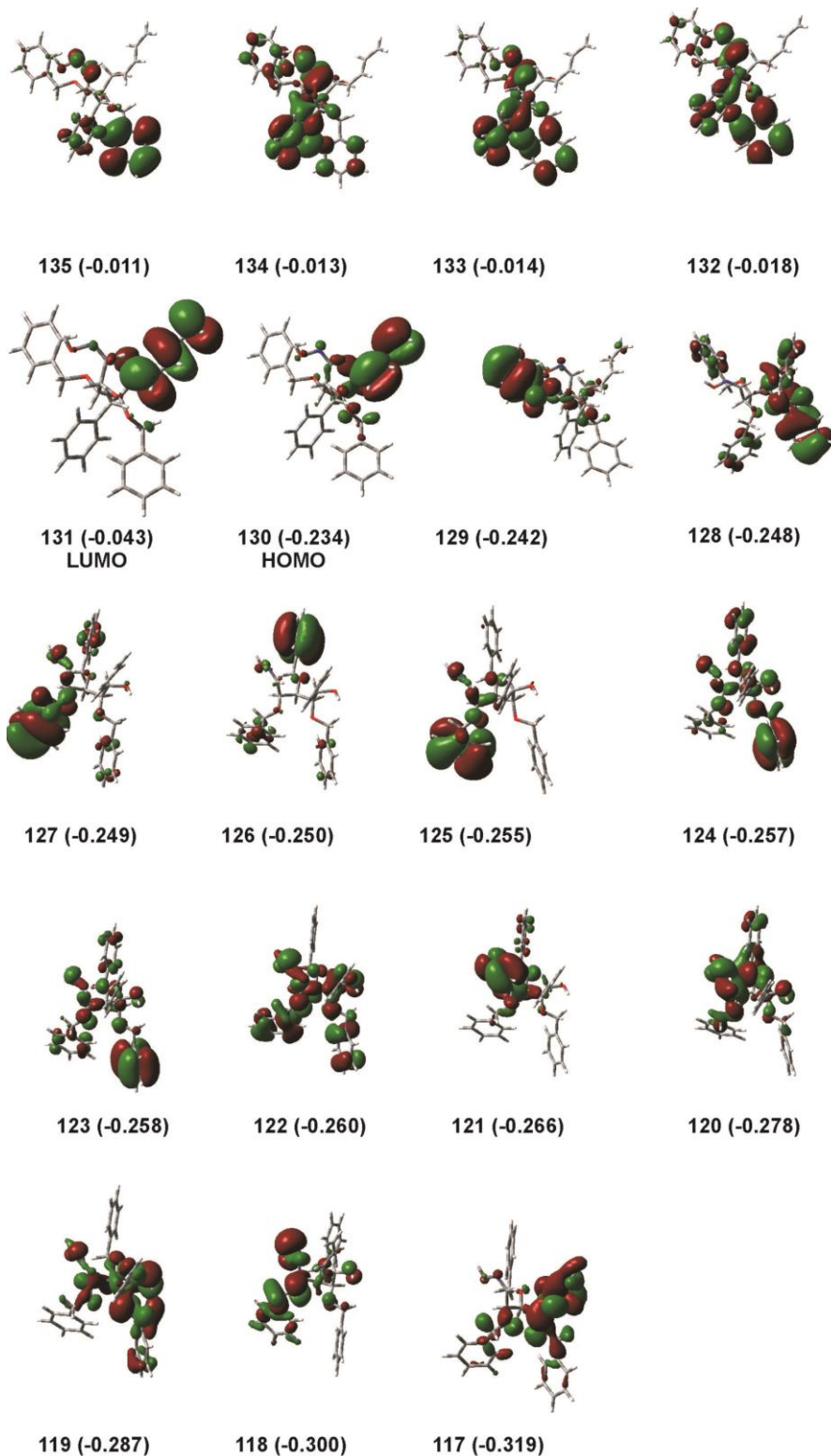
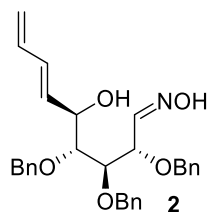


Figure 1S. Selected MO for 2.

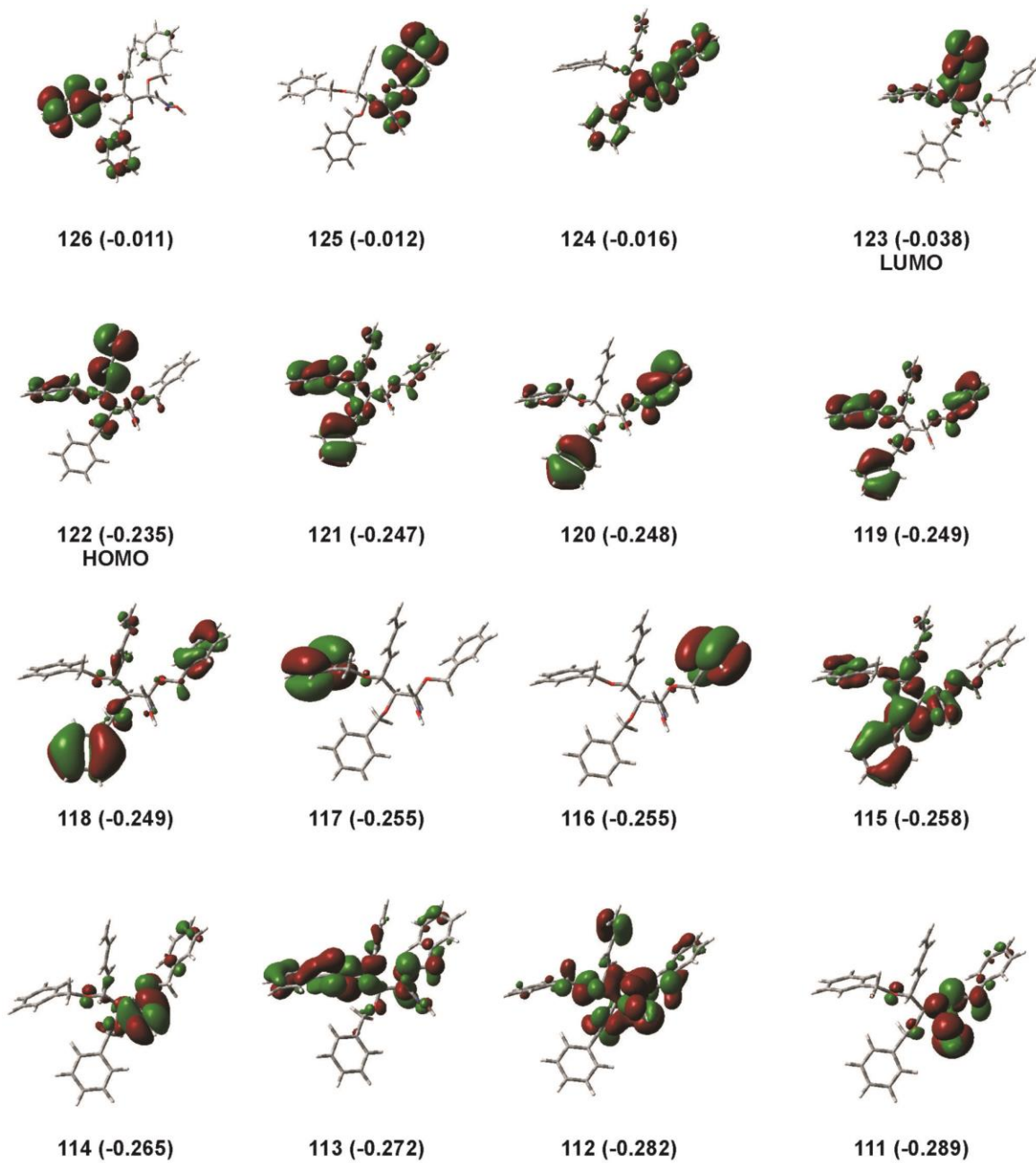
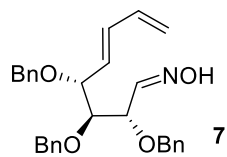


Figure 2S. Selected MO for 7.

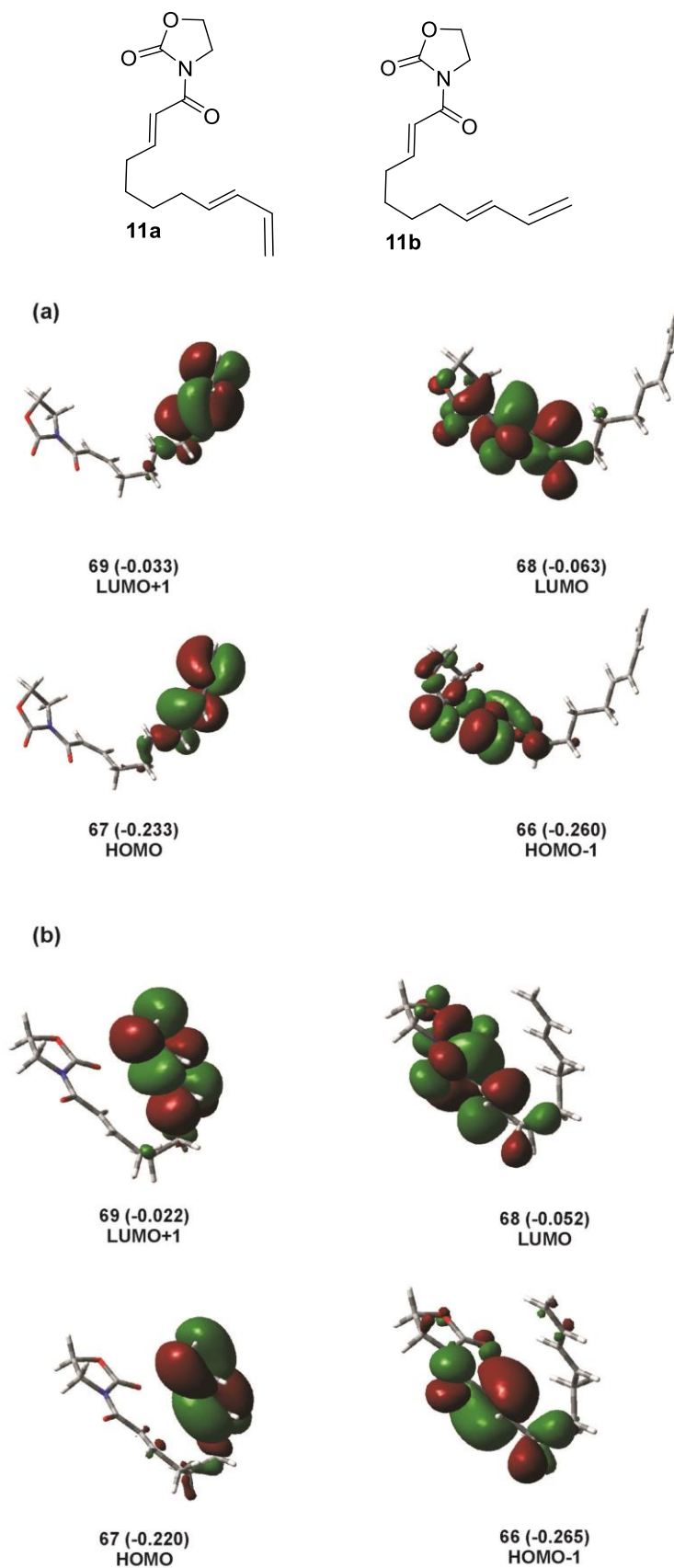


Figure 3S. Selected MO for two conformers of **11**, *s-cis* (a) and *s-trans* (b).

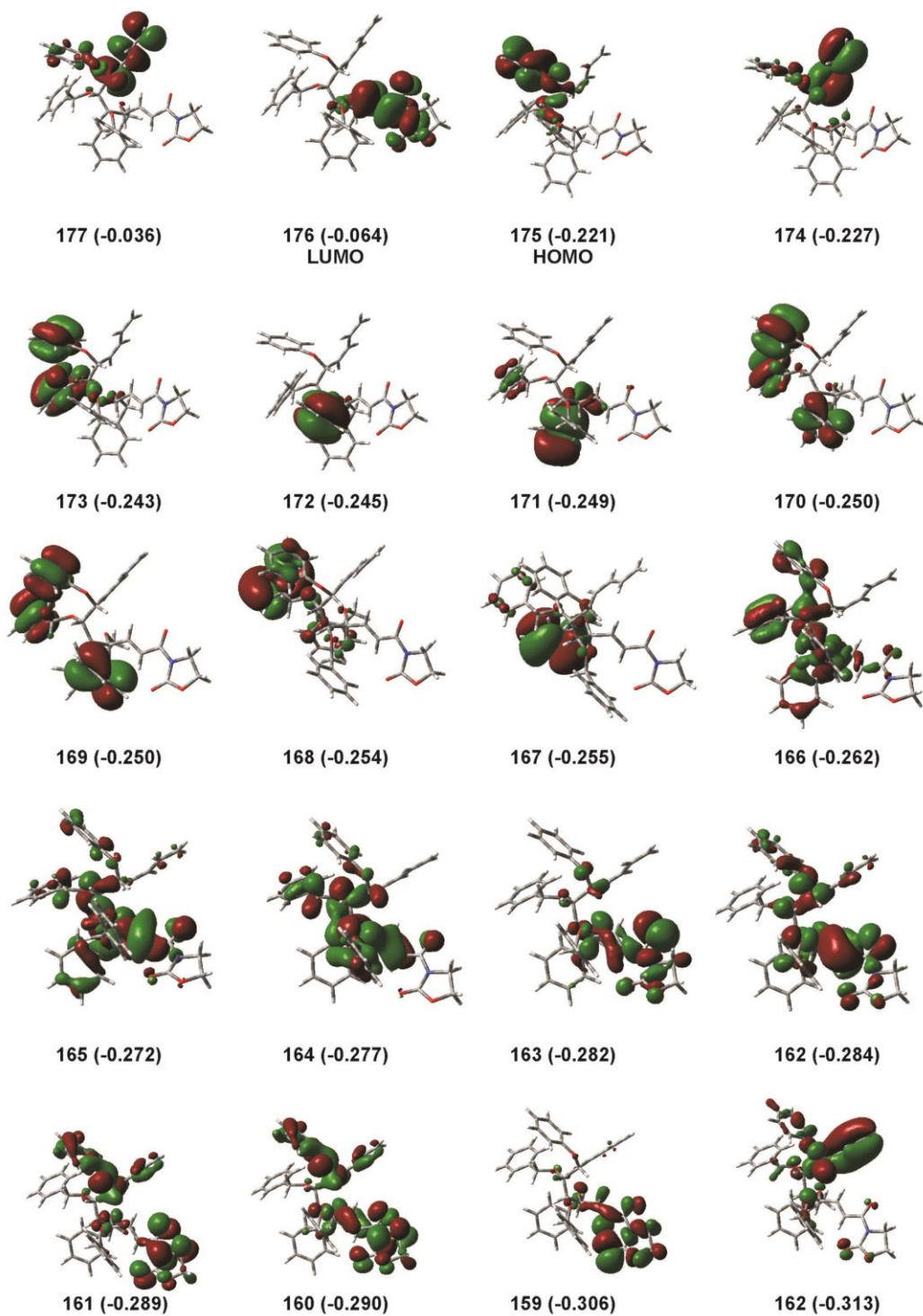
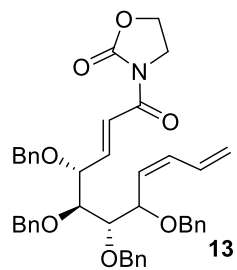


Figure 4S. Some MO for 13.

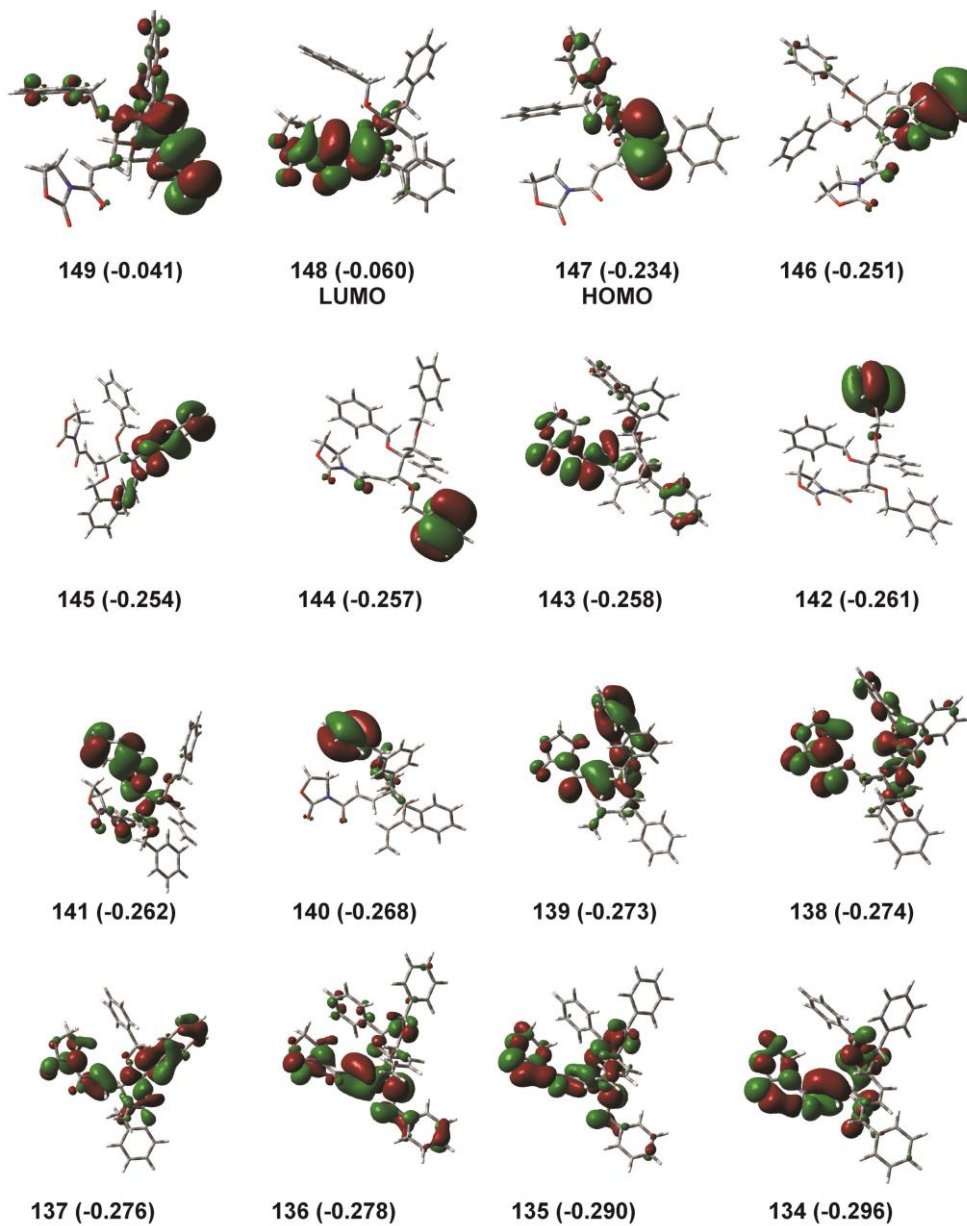
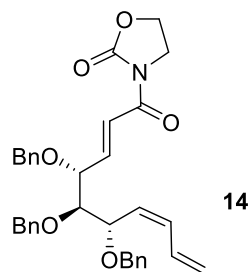


Figure S5. Some molecular orbitals for 14.