

Supplementary Material

Expedient phosgene-free synthesis of symmetrical diarylureas from carbamates

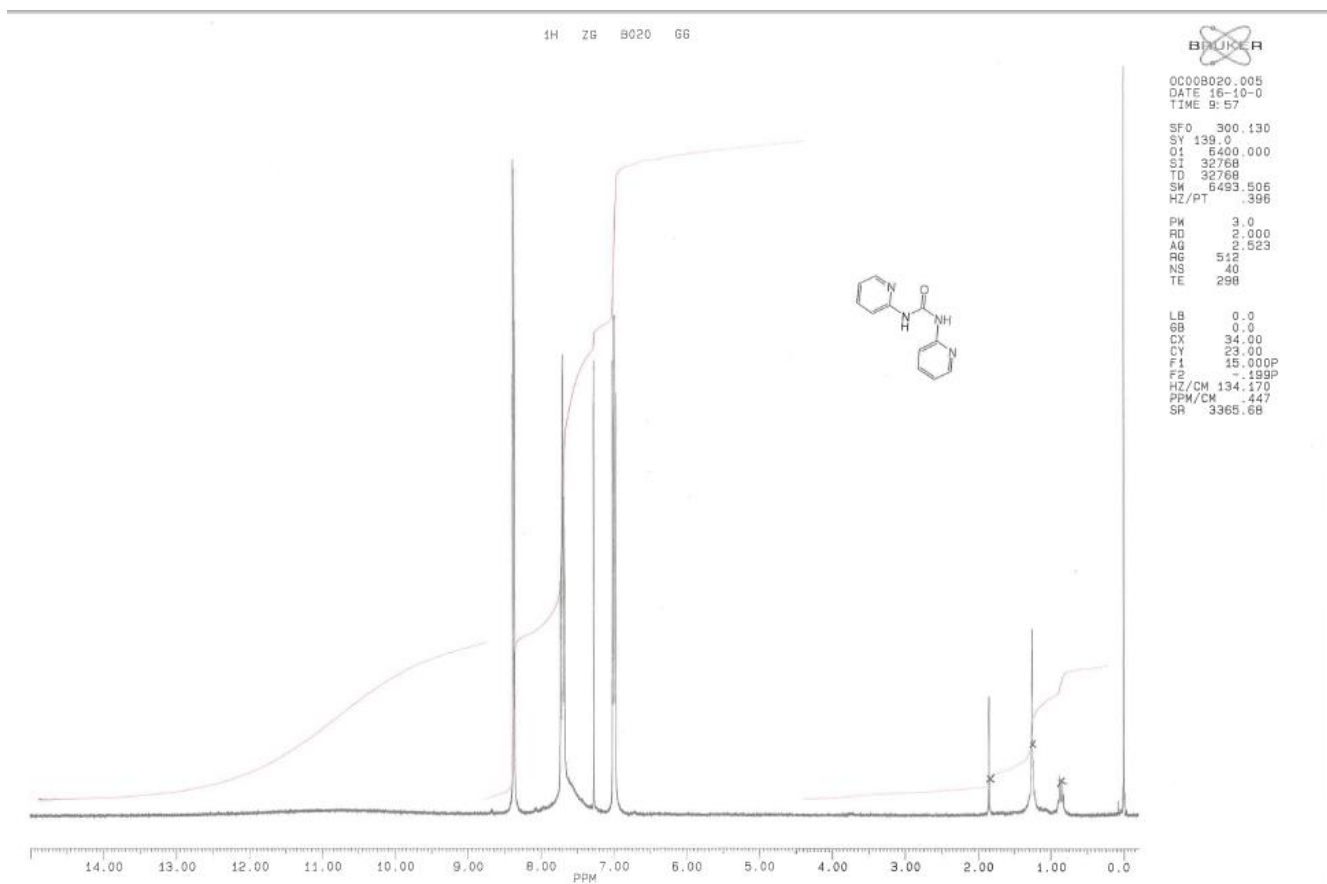
Ibrahim Elghamry and Mamdouh Abdelsalam

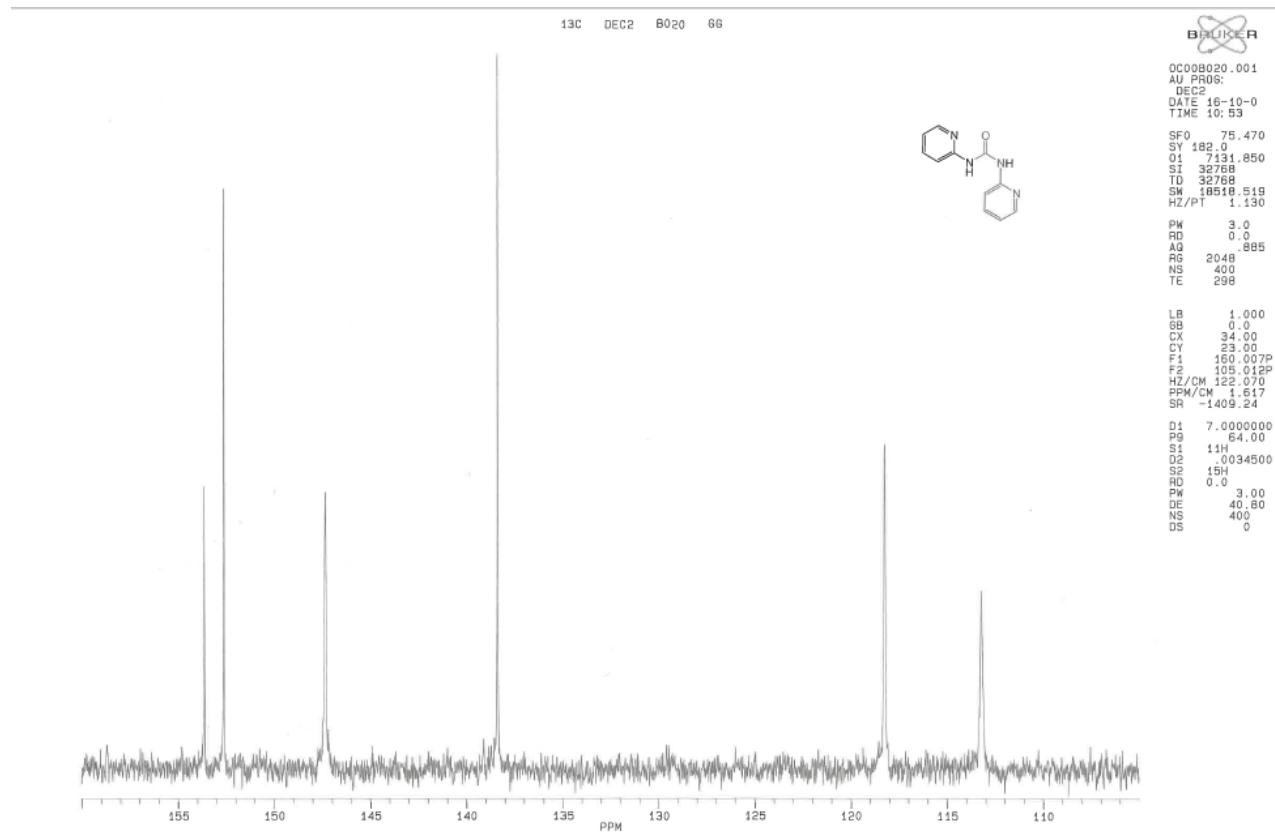
King Faisal University, College of Science, Department of Chemistry, P. O. Box 380 Al-Hufuf, 31982 Al-Ahsa,
Saudi Arabia

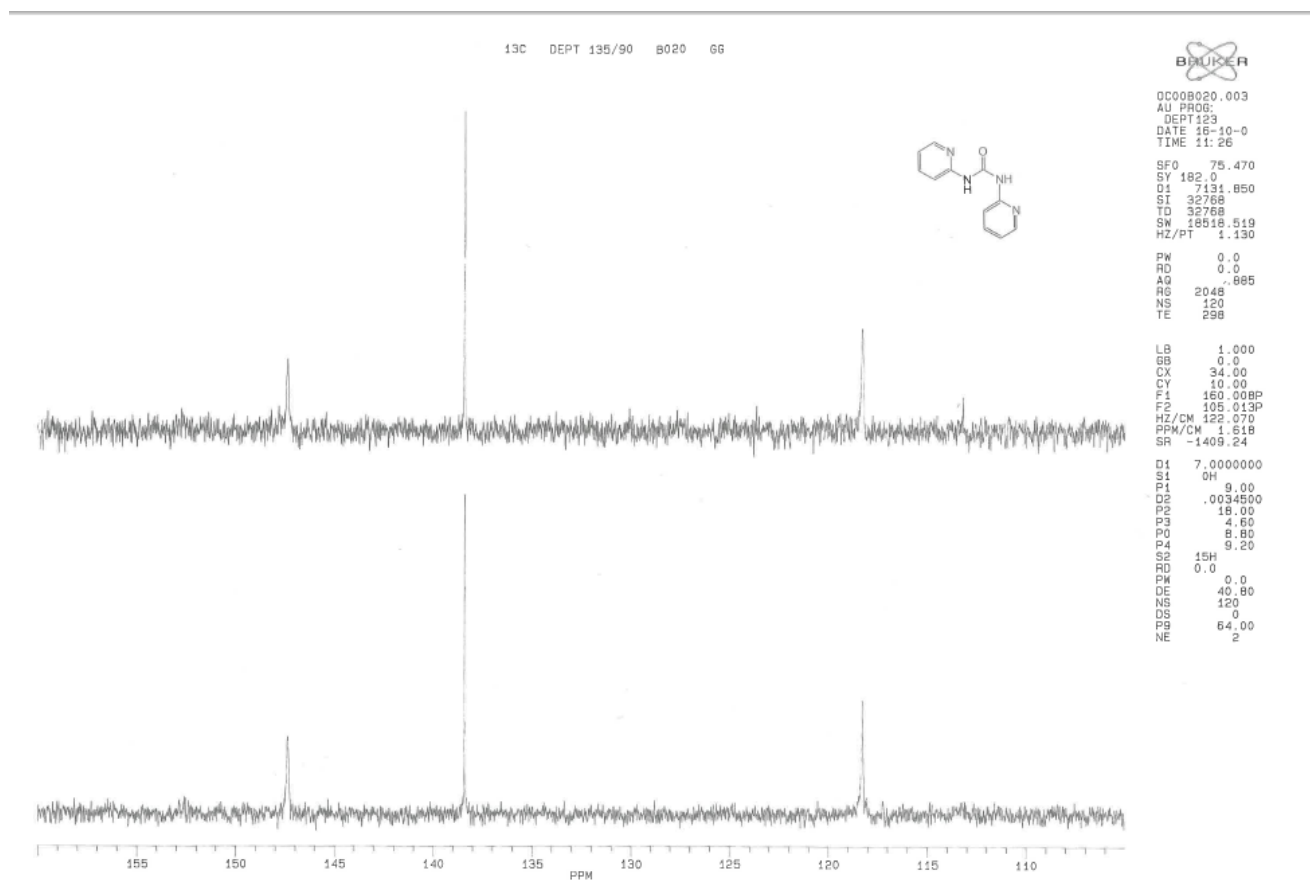
Email: ielghamry@kfu.edu.sa & elghamry@hotmail.com

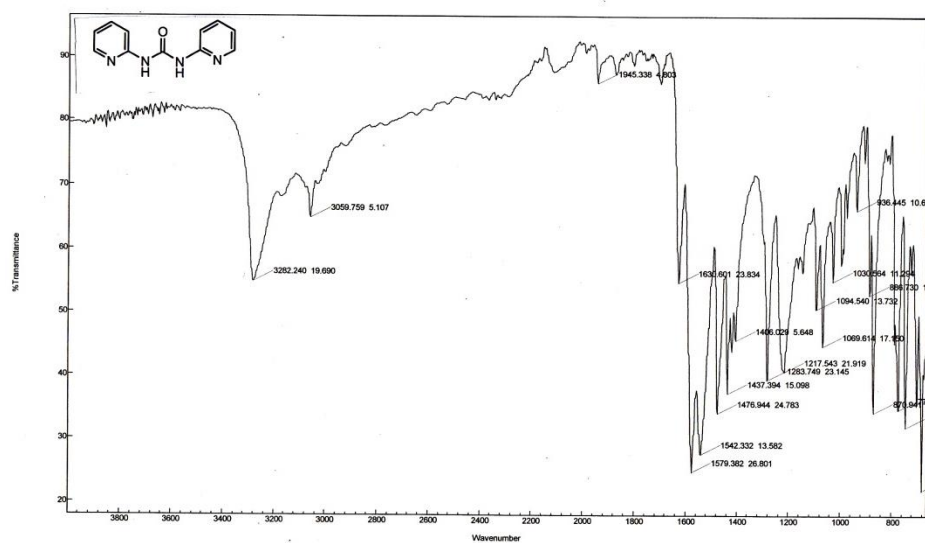
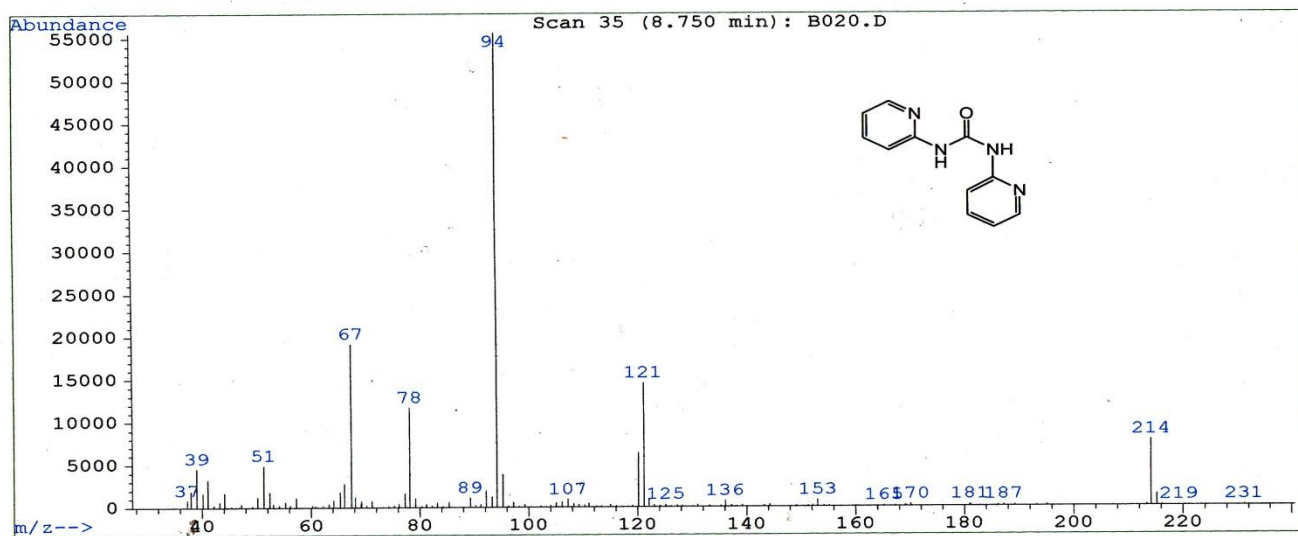
Table of Contents

1. ¹ H NMR of 1,3-Bispyridinylurea (2a)	S2
2. ¹³ C NMR of 1,3-Bispyridinylurea (2a)	S3
3. ¹³ C NMR (DEPT) of 1,3-Bispyridinylurea (2a)	S4
4. MS-EI of 1,3-Bispyridinylurea (2a)	S5
5. IR of 1,3-Bispyridinylurea (2a)	S5
6. ¹ H NMR of 1,3-Bis(2-nitrophenyl)urea (2b)	S6
7. ¹³ C NMR of 1,3-Bis(2-nitrophenyl)urea (2b)	S7
8. IR of 1,3-Bis(2-nitrophenyl)urea (2b)	S7
9. ¹ H NMR of 1,3-Bis(4-nitrophenyl)urea (2c)	S8
10. ¹³ C NMR of 1,3-Bis(4-nitrophenyl)urea (2c)	S8
11. IR of 1,3-Bis(4-nitrophenyl)urea (2c)	S9
12. ¹ H NMR of 1,3-Bis(3-chlorophenyl)urea (2d)	S9
13. ¹³ C NMR of 1,3-Bis(3-chlorophenyl)urea (2d)	S10
14. IR of 1,3-Bis(3-chlorophenyl)urea (2d)	S10
15. ¹ H NMR of DMSO	S11

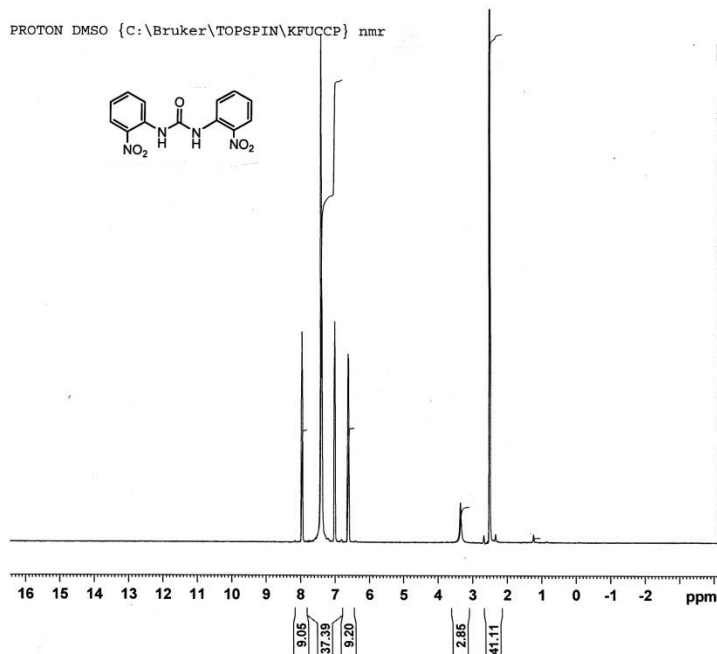
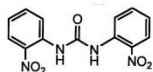








PROTON DMSO {C:\Bruker\TOPSPIN\KFUCCP} nmr

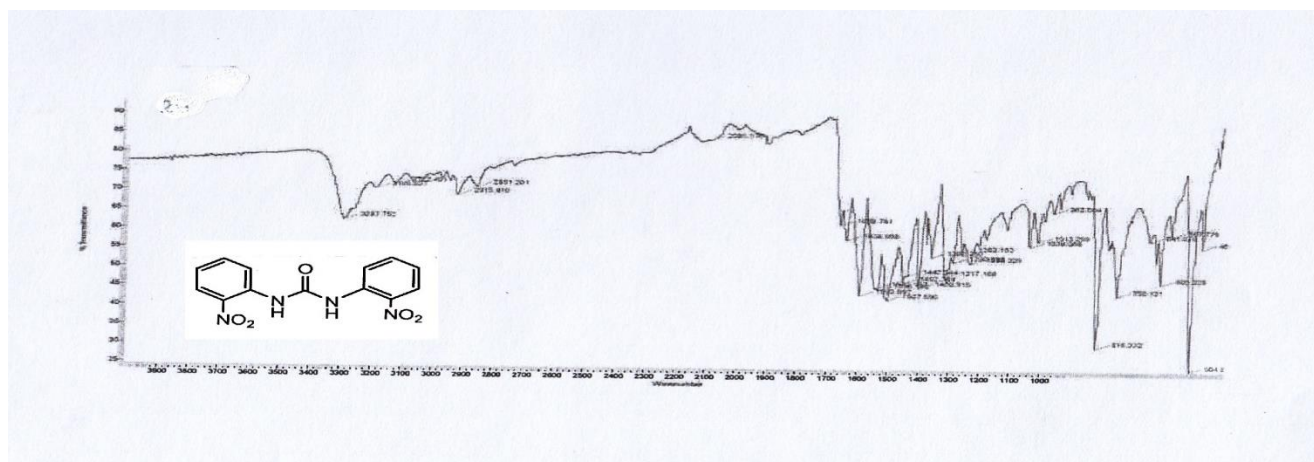
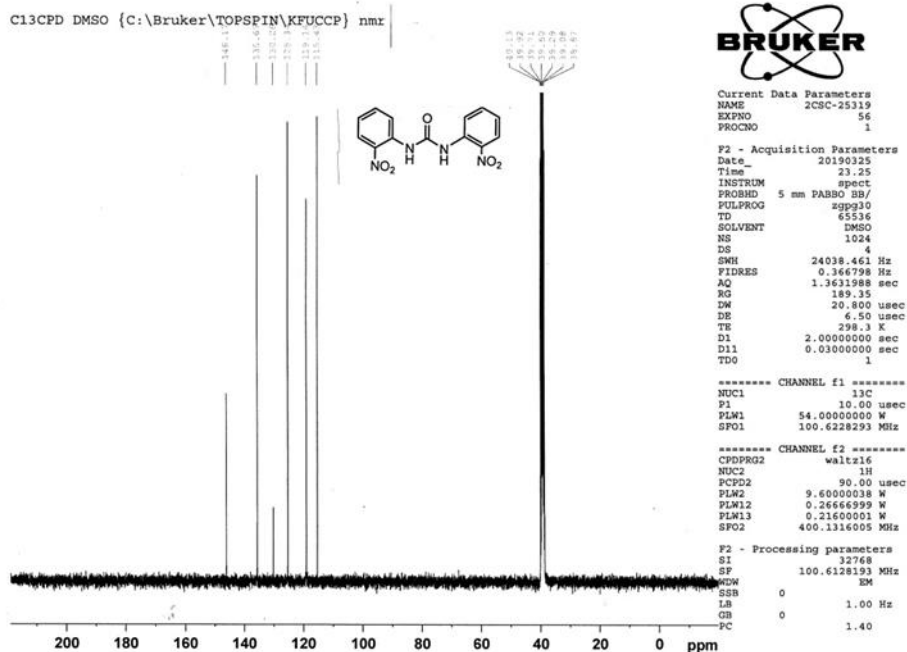


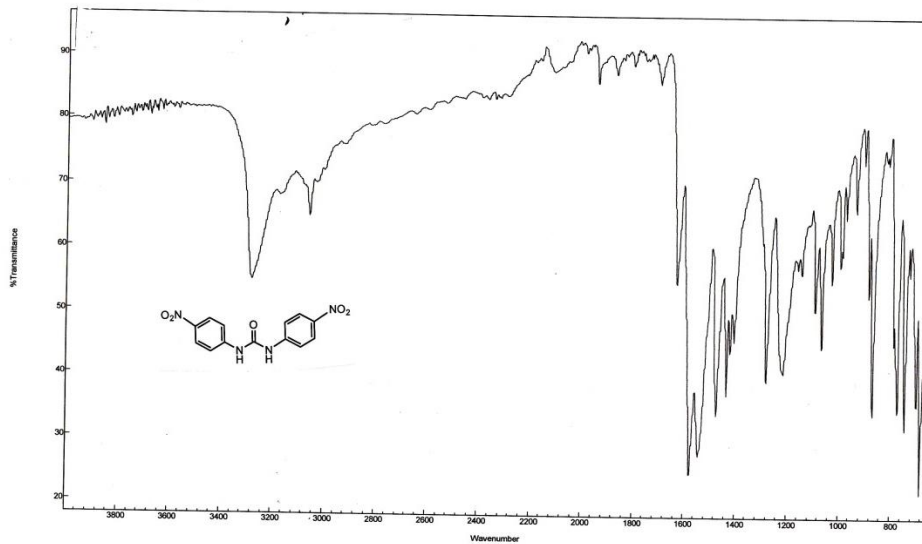
Current Data Parameters
 NAME 2CSC-25319
 EXPRO 55
 PROCNO 1

F2 - Acquisition Parameters
 Date 20190325
 Time 22.25
 INSTRUM spect
 PROBHD 5 mm PABBO BB/
 PULPROG zg30
 TD 65536
 SOLVENT DMSO
 NS 16
 DS 2
 SMH 8223.685 Hz
 FIDRES 0.125483 Hz
 AQ 3.9846387 sec
 RG 150.17
 DW 60.800 usec
 DE 6.50 usec
 TE 297.2 K
 D1 1.00000000 sec
 TDO 1

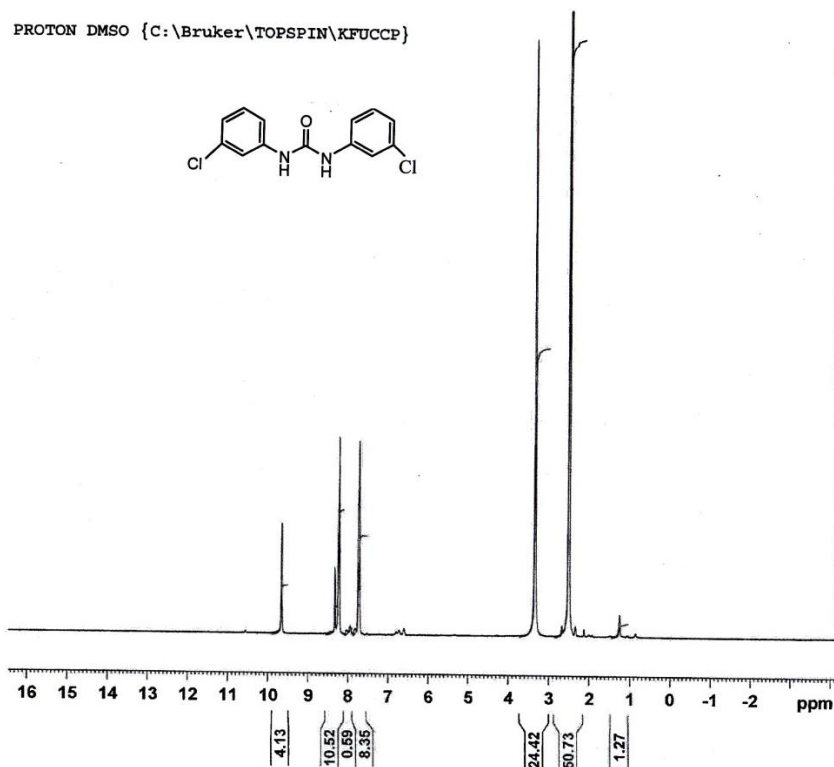
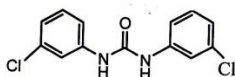
***** CHANNEL f1 *****
 NUC1 1H
 P1 15.00 usec
 PLW1 9.6000038 W
 SFO1 400.1324710 MHz

F2 - Processing parameters
 SI 65536
 SF 400.1300000 MHz
 WDW EM
 SSB 0
 LB 0.30 Hz
 GB 0
 FC 1.00





PROTON DMSO {C:\Bruker\TOPSPIN\KFUCCP}



Current Data Parameters
 NAME 2DSC-25319
 EXPNO 53
 PROCNO 1

F2 - Acquisition Parameters
 Date_ 20190325
 Time 21.22
 INSTRUM spect
 PROBHD 5 mm PABBO BB/
 PULPROG zg30
 TD 65536
 SOLVENT DMSO
 NS 16
 DS 2
 SWH 8223.685 Hz
 FIDRES 0.125483 Hz
 AQ 3.9846387 sec
 RG 150.17
 DW 60.800 usec
 DE 6.50 usec
 TE 297.4 K
 D1 1.0000000 sec
 TDO 1

===== CHANNEL f1 =====
 NUC1 1H
 P1 15.00 usec
 PLW1 9.6000038 W
 SFO1 400.1324710 MHz

F2 - Processing parameters
 SI 65536
 SF 400.1300000 MHz
 WDW EM
 SSB 0
 LB 0.30 Hz
 GB 0
 PC 1.00

C13CPD DMSO {C:\Bruker\TOPSPIN\KFUCCP} nmr

