

Supplementary Material

Diastereoselective synthesis of 2-vinylpyrrolidines and 2-vinylpiperidines by the palladium-catalysed cyclization of amino-allylic carbonates containing a chiral protecting group

Beata Olszewska, Aleksandra Jabłońska, and Anna Zawisza*

Department of Organic and Applied Chemistry, University of Łódź, Tamka 12, 91-403 Łódź, Poland

Email: azawisza@chemia.uni.lodz.pl

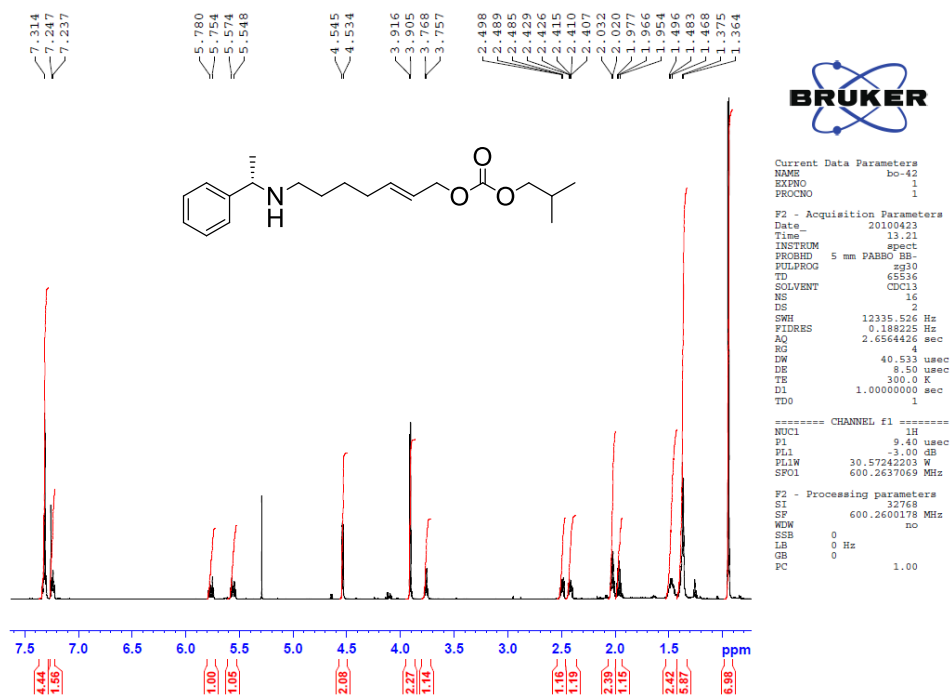
Table of contents

Copies of ^1H and ^{13}C NMR spectra

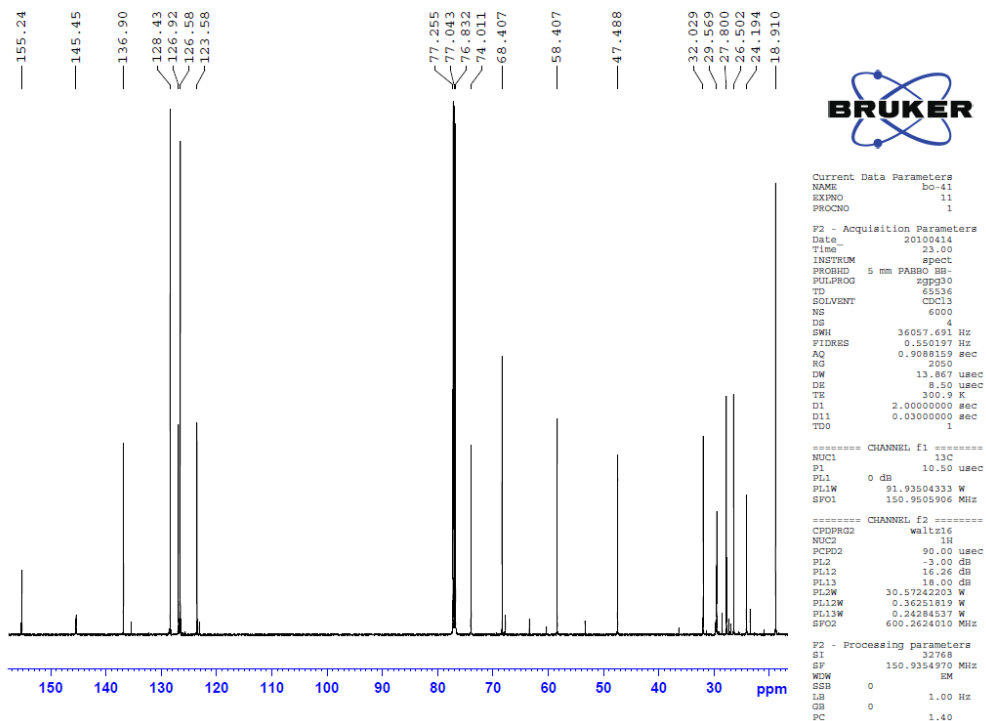
S2

The ¹H and ¹³C NMR of 5a

¹H NMR (600MHz, CD₃Cl):

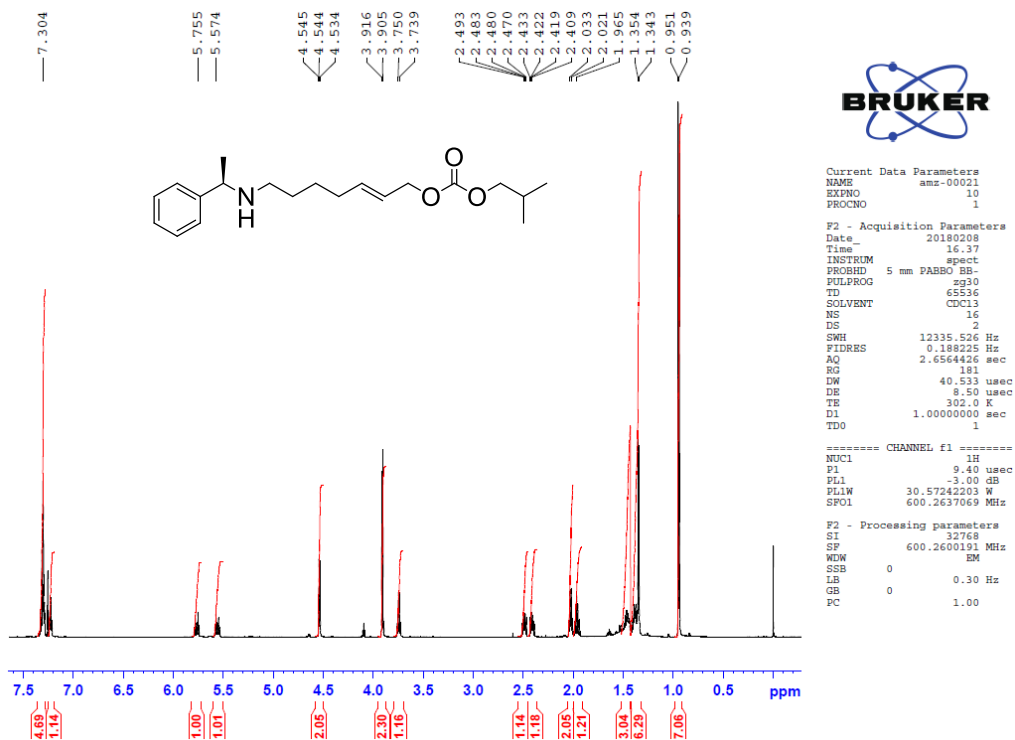


¹³C NMR (150MHz, CD₃Cl):

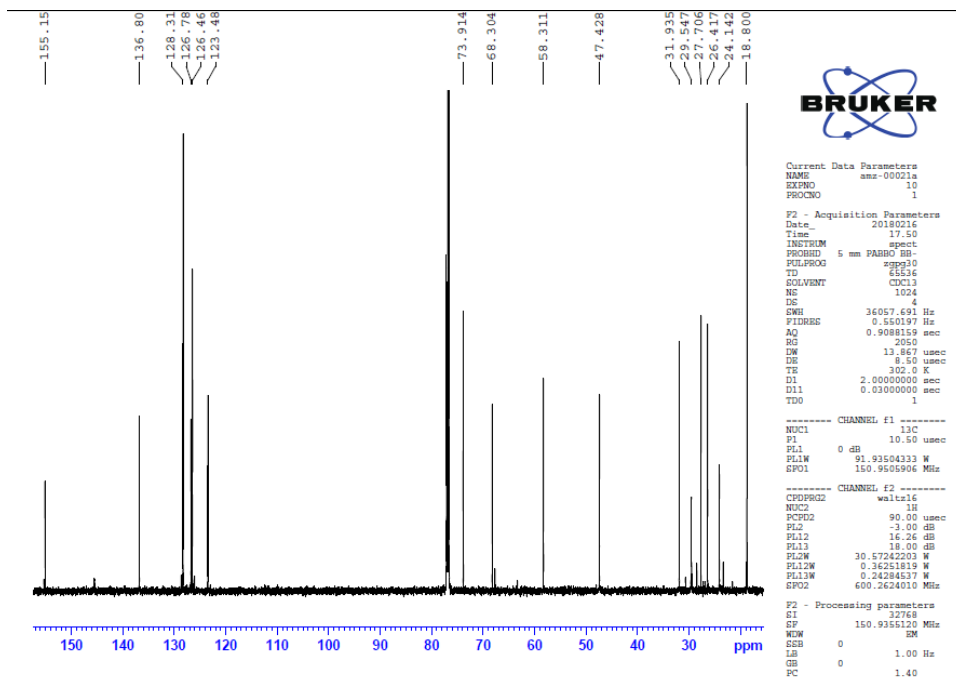


The ¹H and ¹³C NMR of **5b**

¹H NMR (600MHz, CD₃Cl):

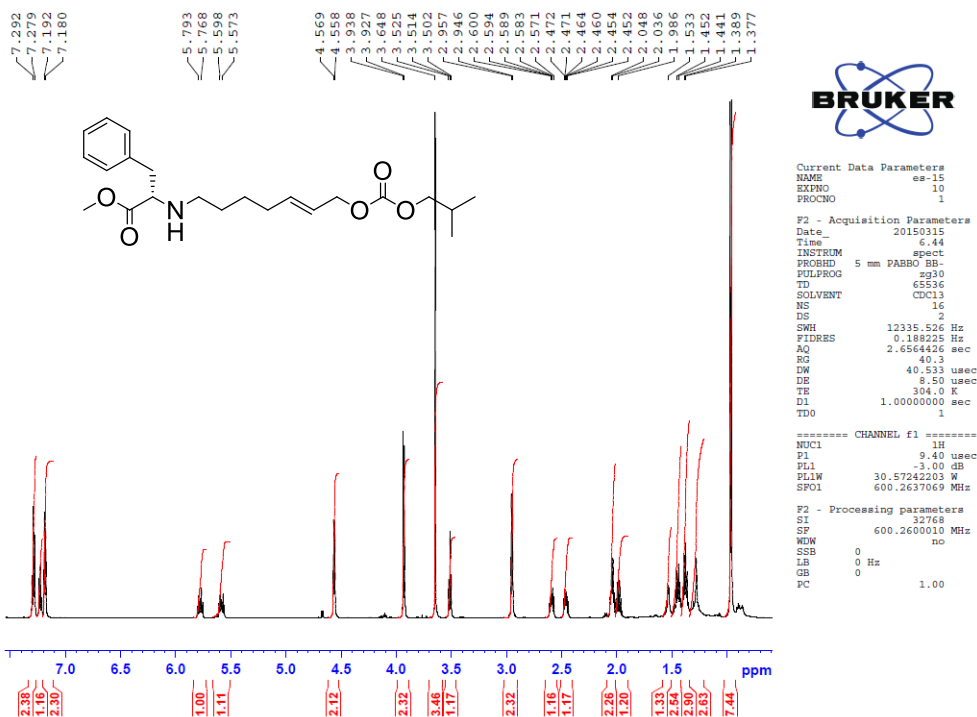


¹³C NMR (150MHz, CD₃Cl):

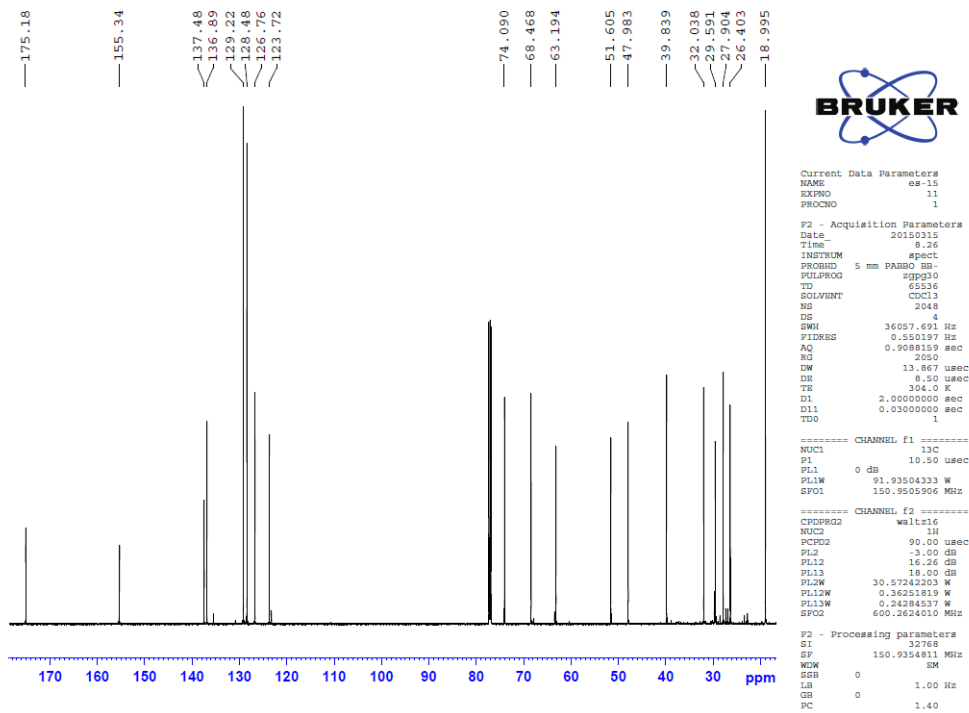


The ¹H and ¹³C NMR of 5c

¹H NMR (600MHz, CD₃Cl):

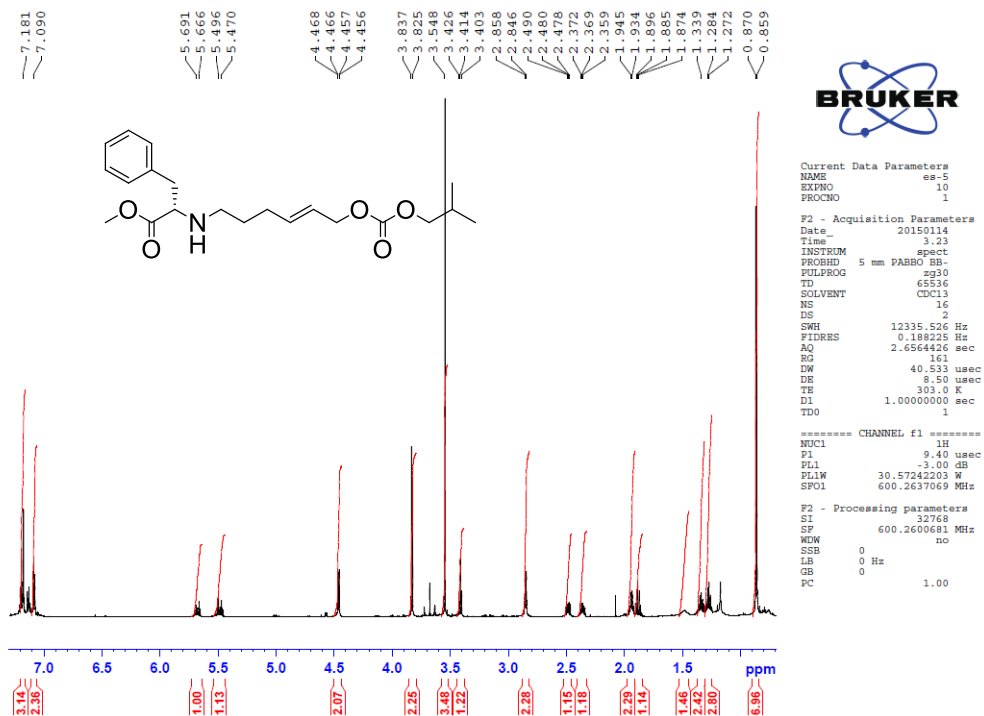


¹³C NMR (150MHz, CD₃Cl):

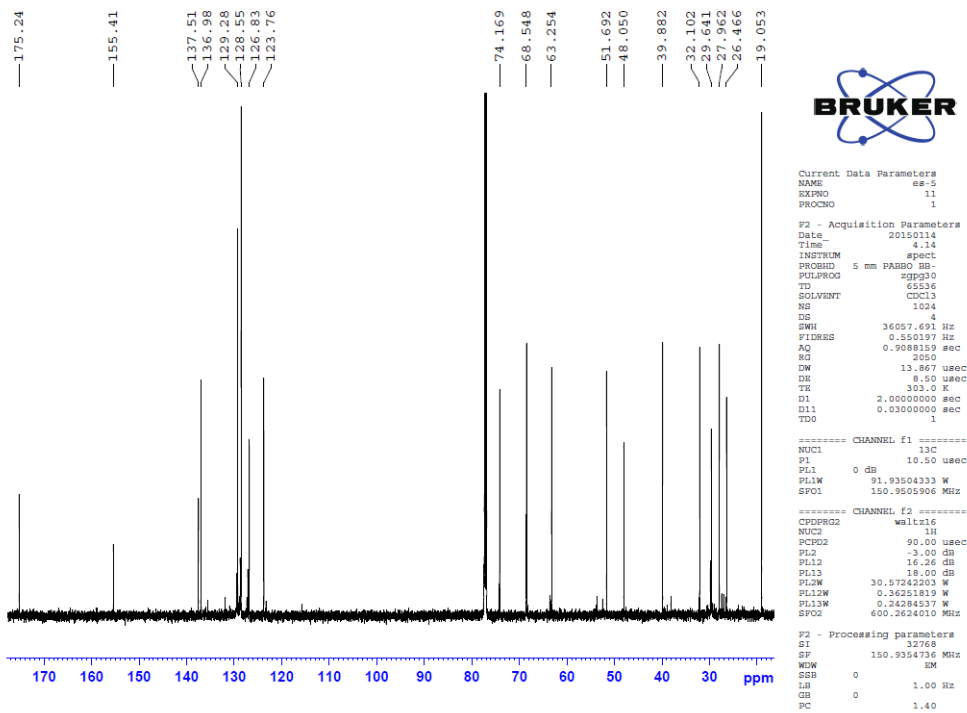


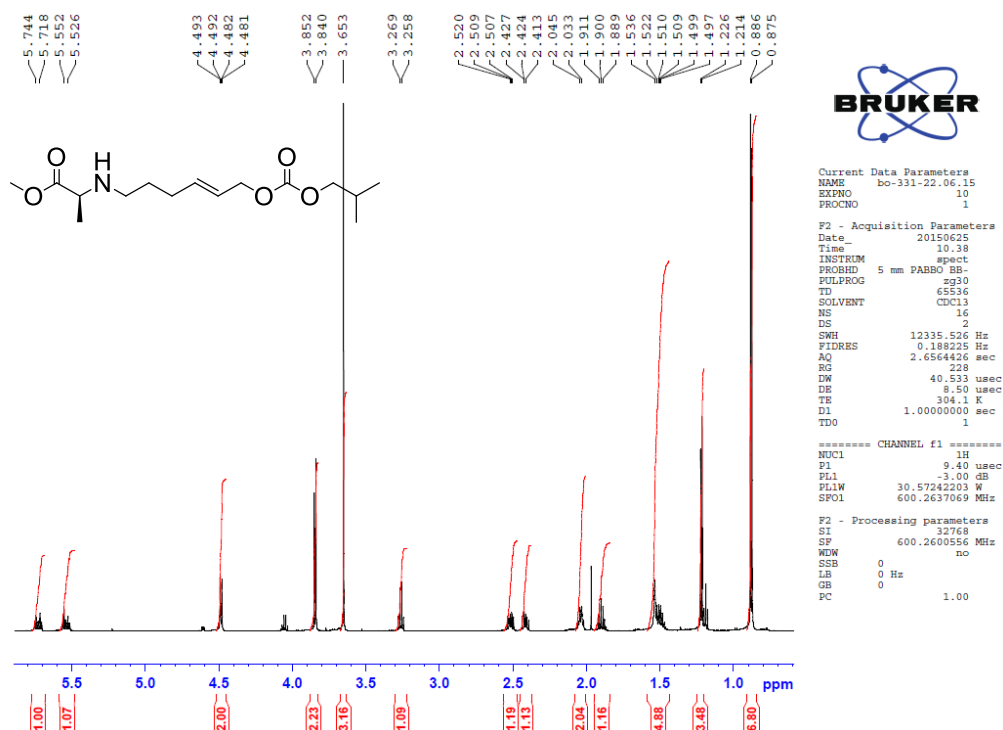
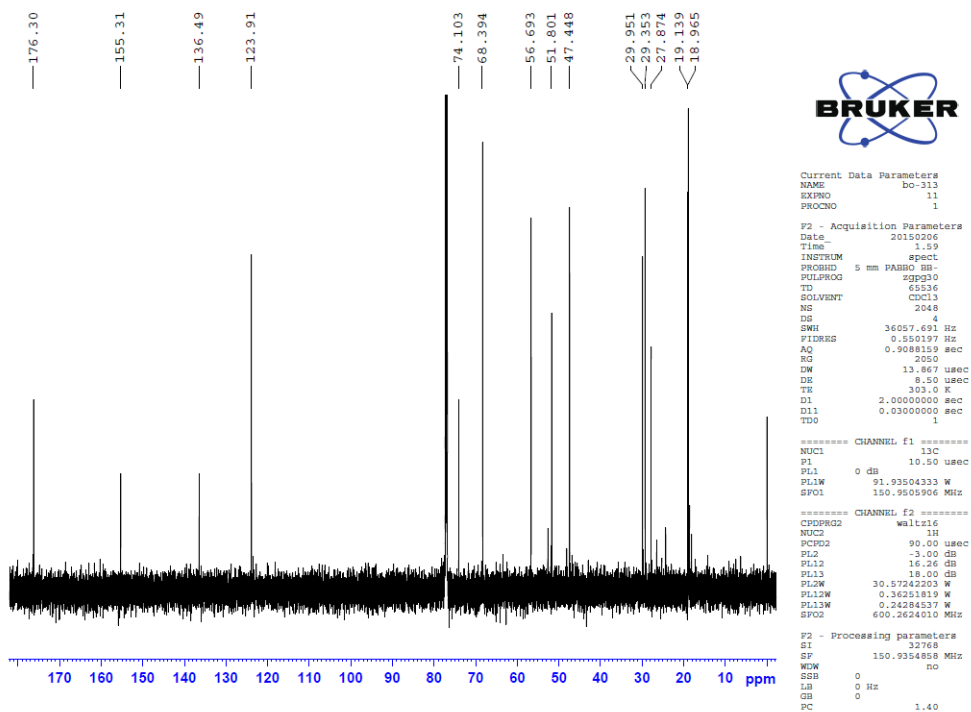
The ¹H and ¹³C NMR of **5d**

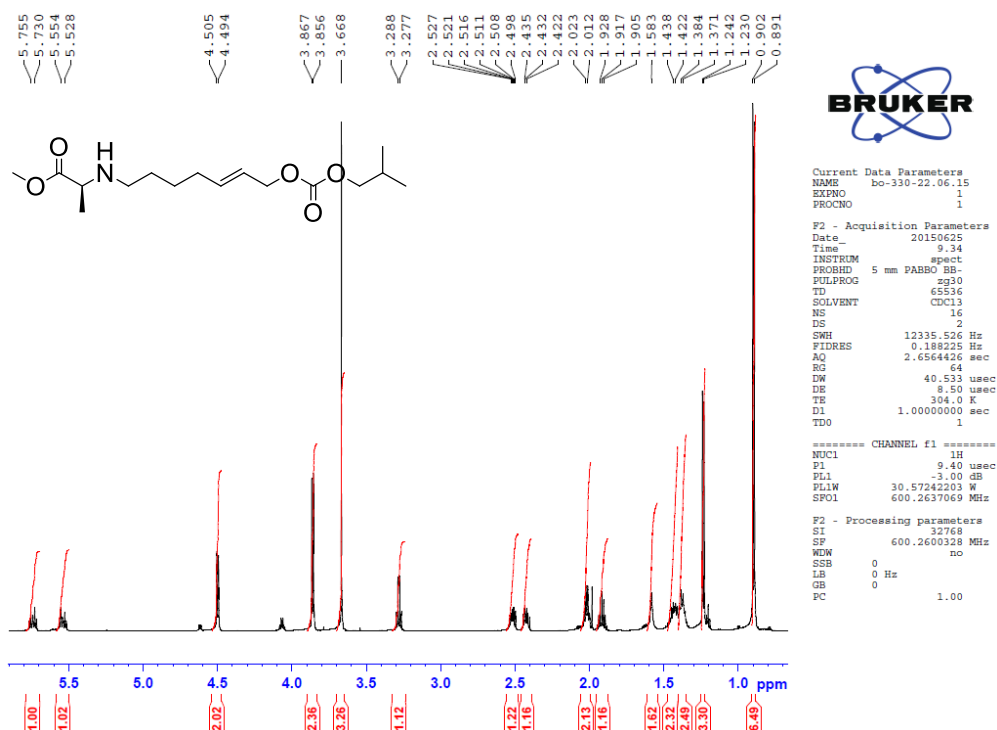
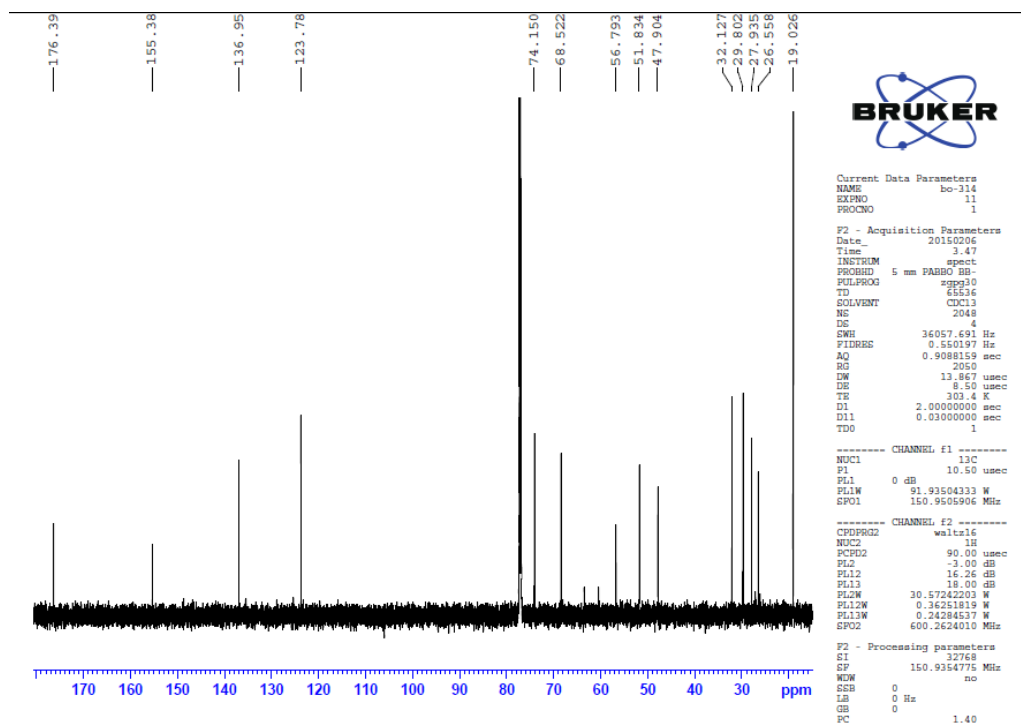
¹H NMR (600MHz, CD₃Cl):

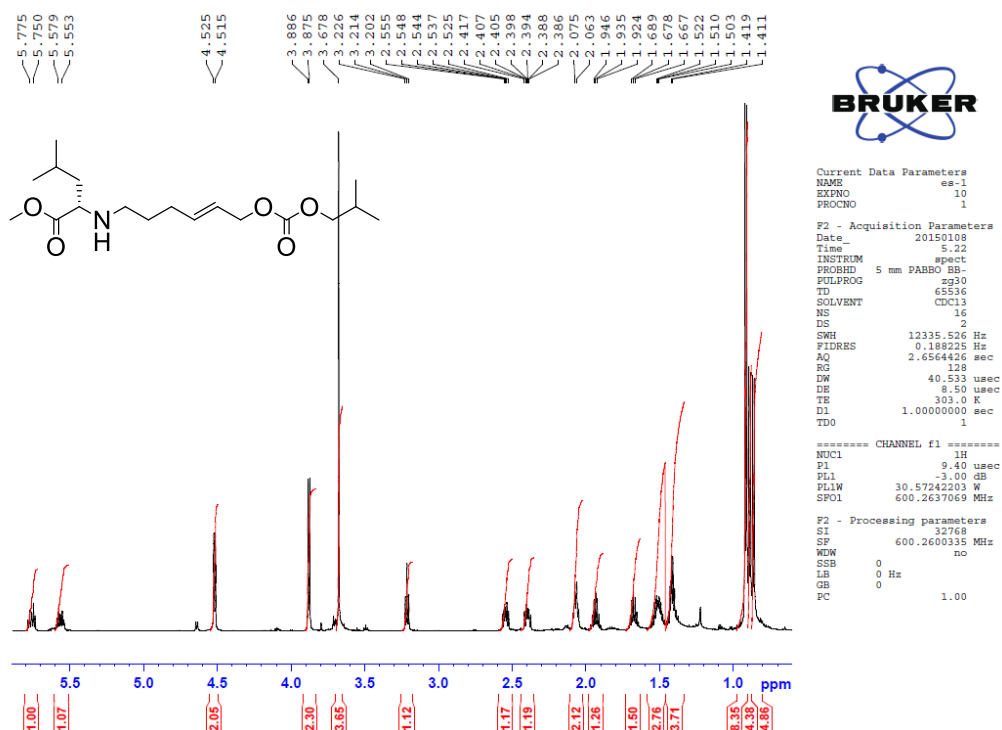
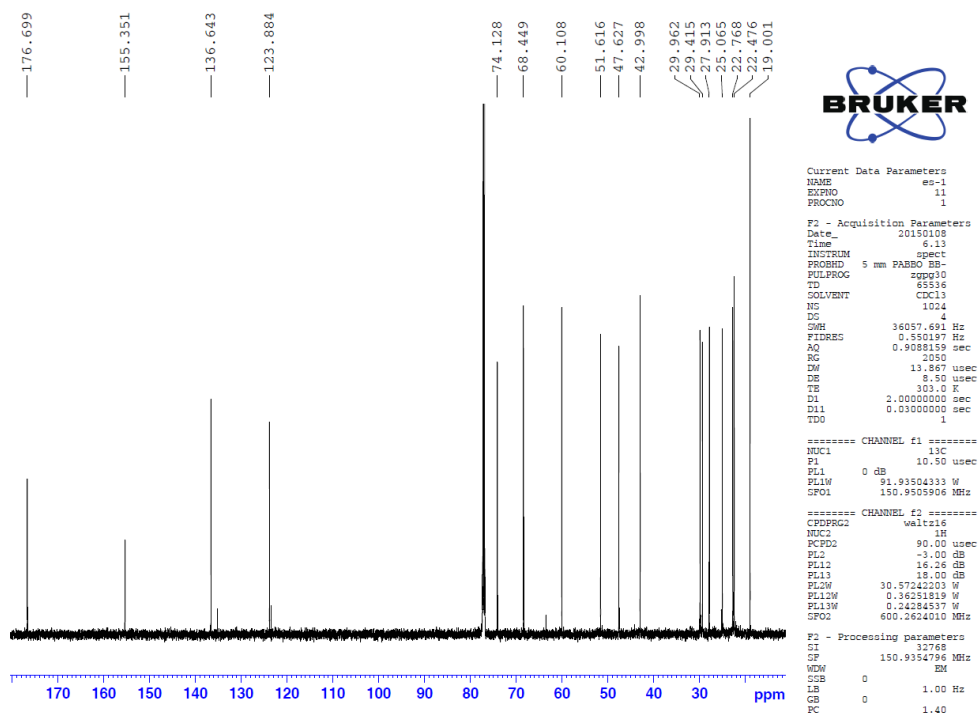


¹³C NMR (150MHz, CD₃Cl):



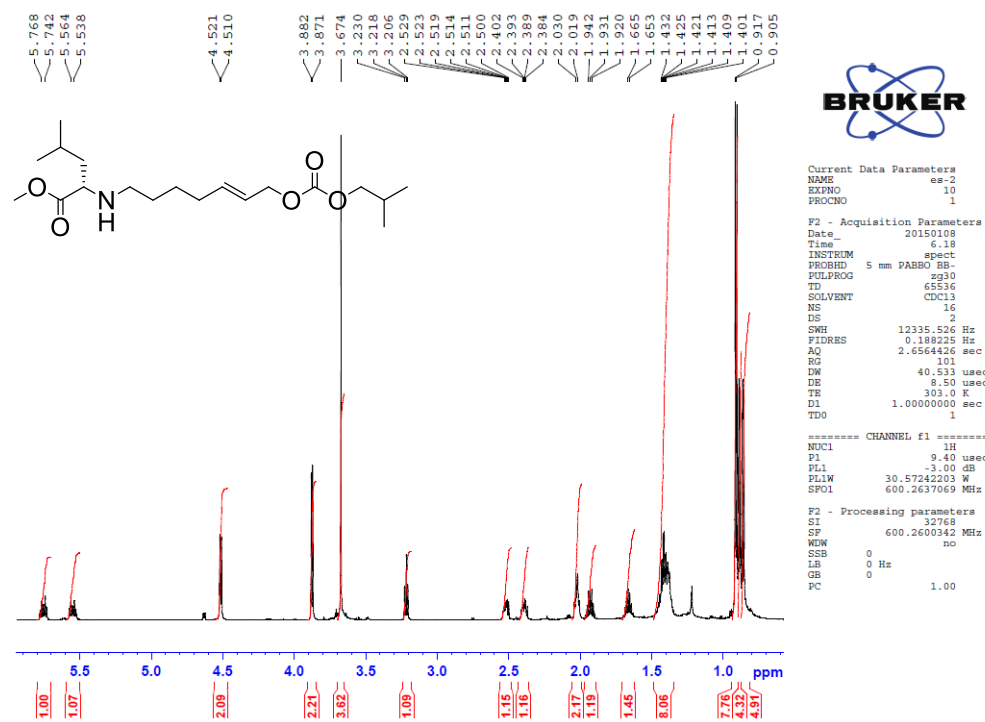
The ^1H and ^{13}C NMR of **5e** ^1H NMR (600MHz, CD_3Cl): ^{13}C NMR (150MHz, CD_3Cl):

The ^1H and ^{13}C NMR of **5f** ^1H NMR (600MHz, CD_3Cl): ^{13}C NMR (150MHz, CD_3Cl):

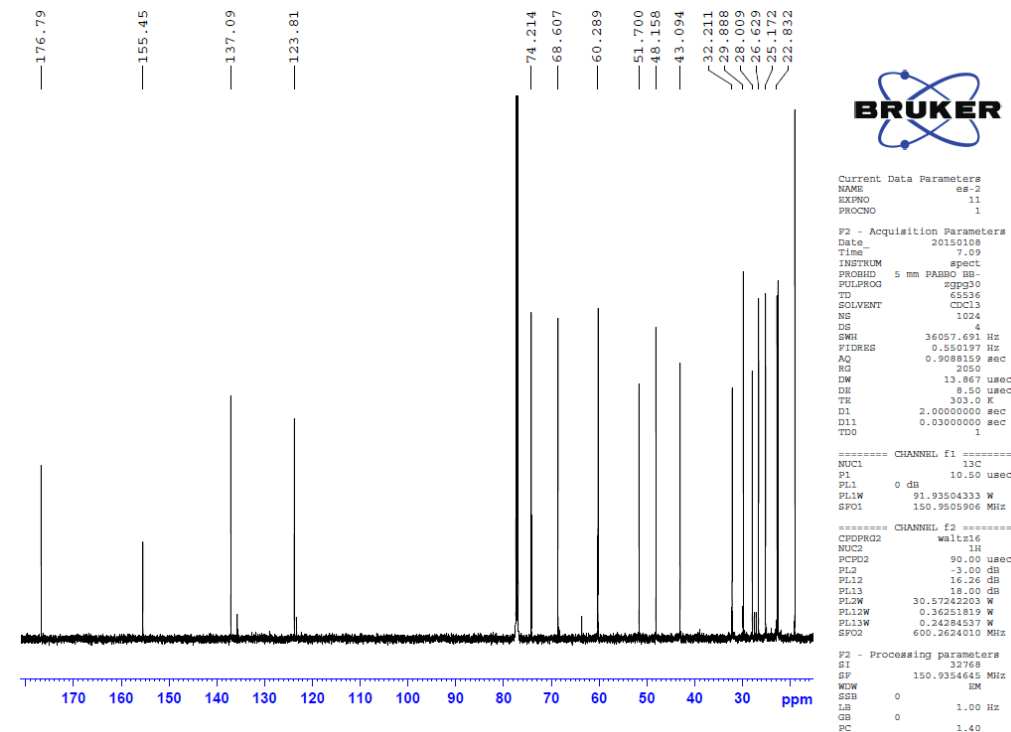
The ^1H and ^{13}C NMR of **5g** ^1H NMR (600MHz, CD_3Cl): ^{13}C NMR (150MHz, CD_3Cl):

The ¹H and ¹³C NMR of **5h**

¹H NMR (600MHz, CD₃Cl):

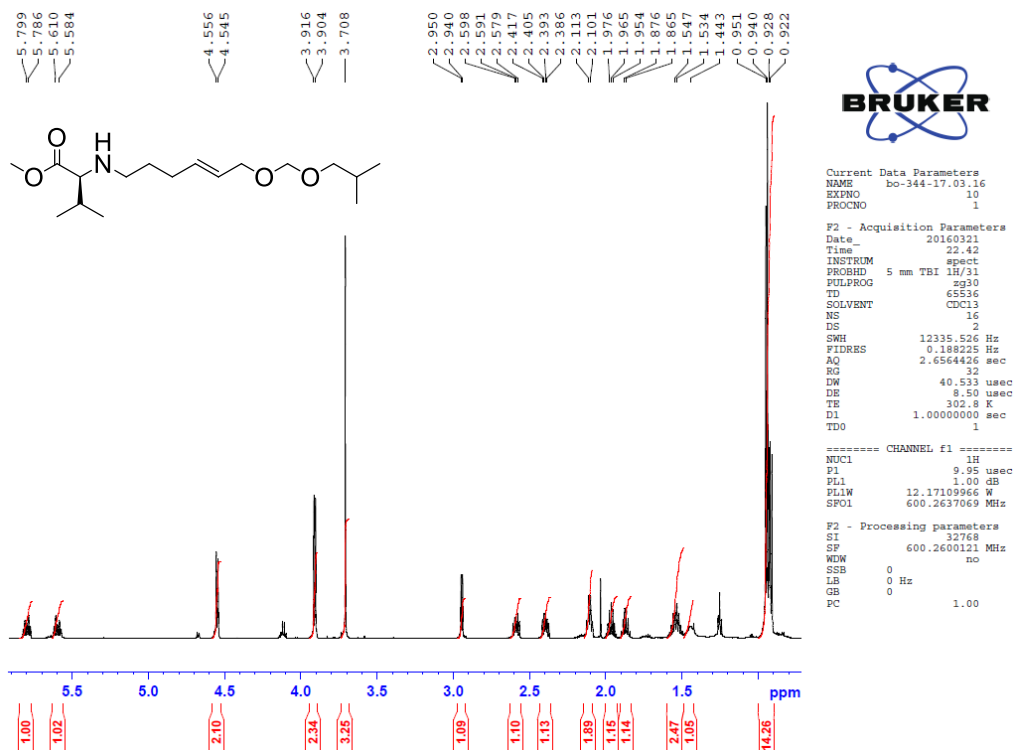


¹³C NMR (150MHz, CD₃Cl):

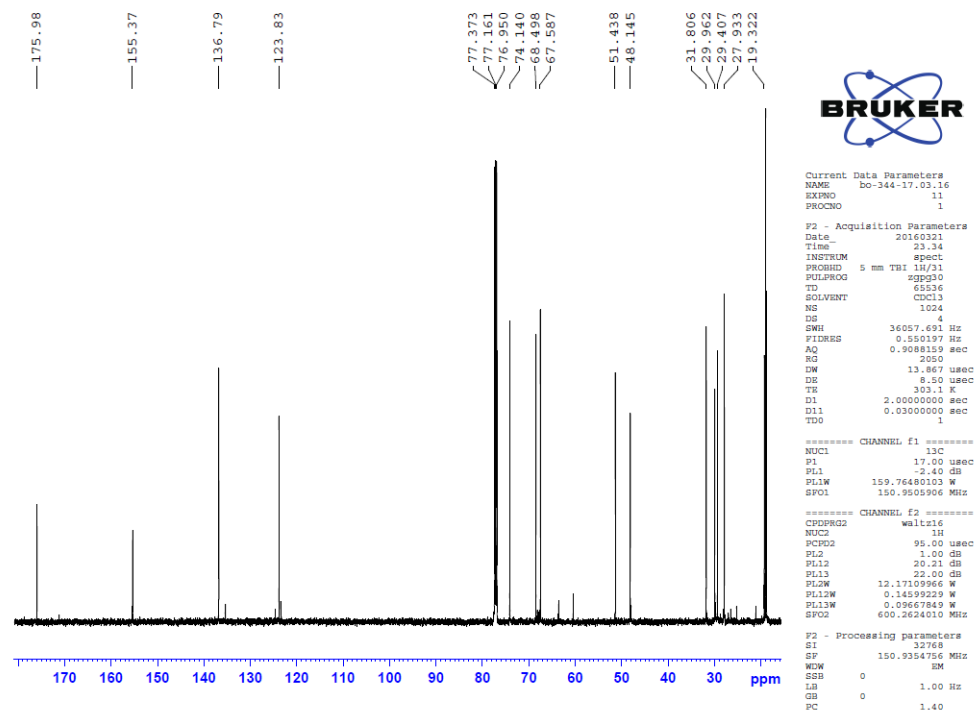


The ¹H and ¹³C NMR of 5i

¹H NMR (600MHz, CD₃Cl):

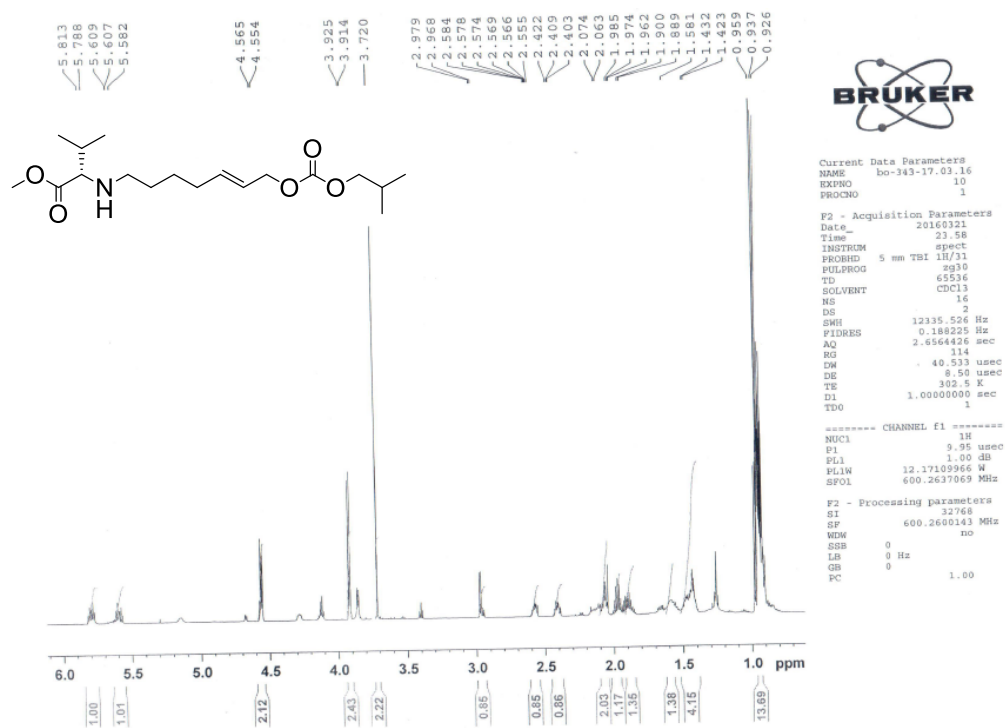


¹³C NMR (150MHz, CD₃Cl):

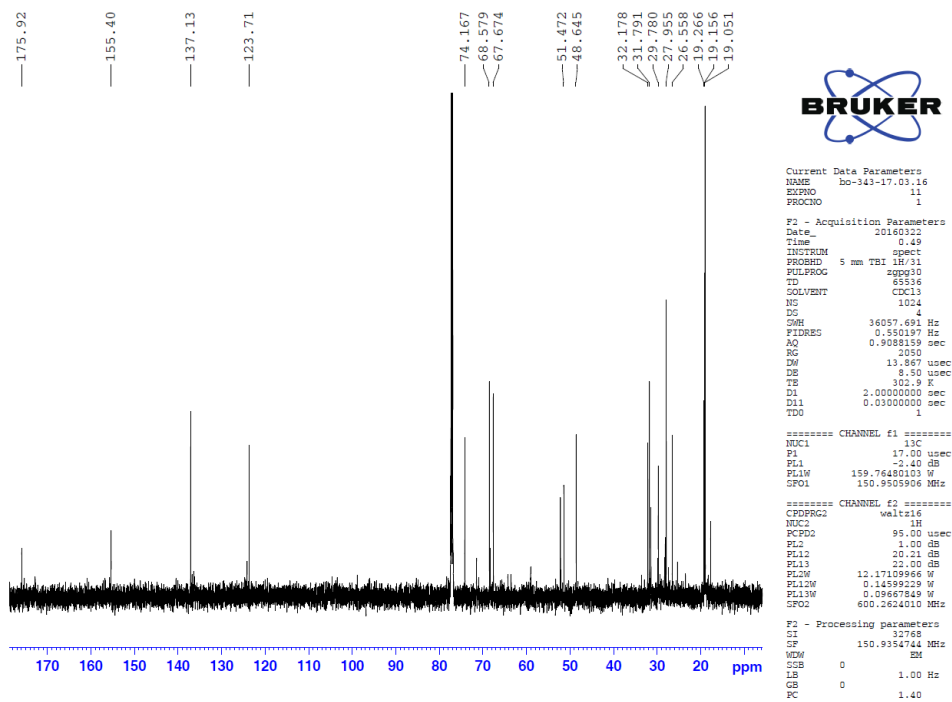


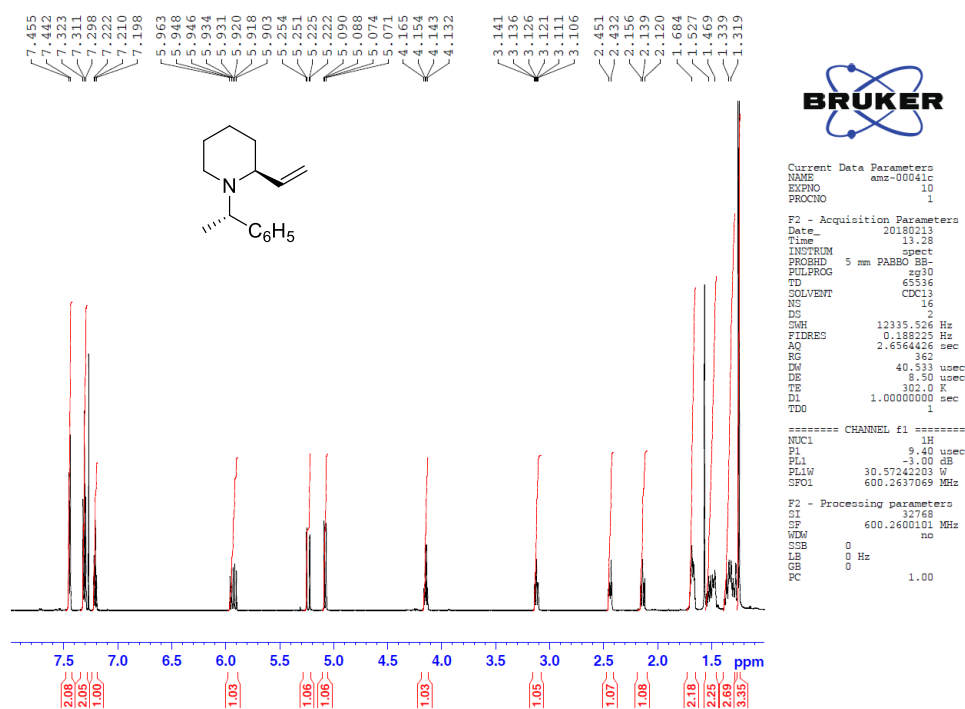
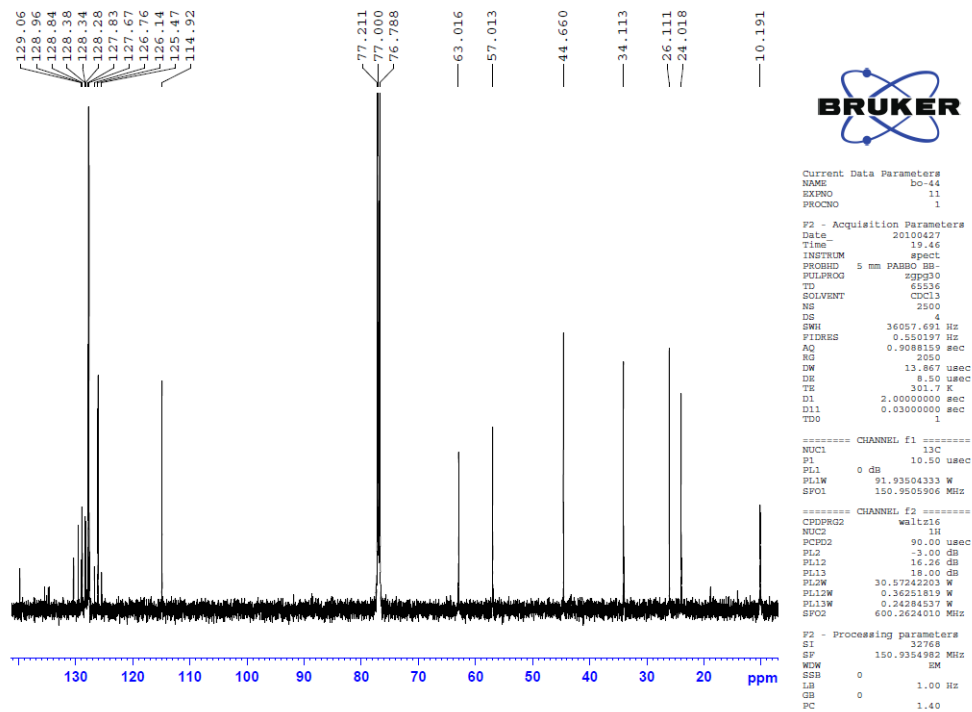
The ¹H and ¹³C NMR of 5j

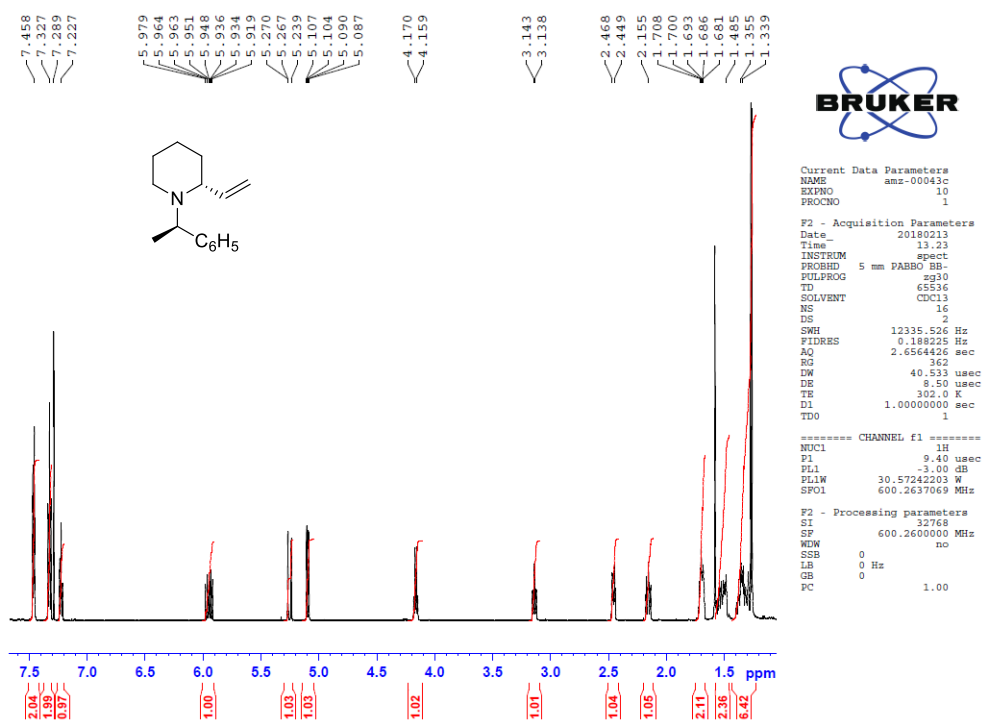
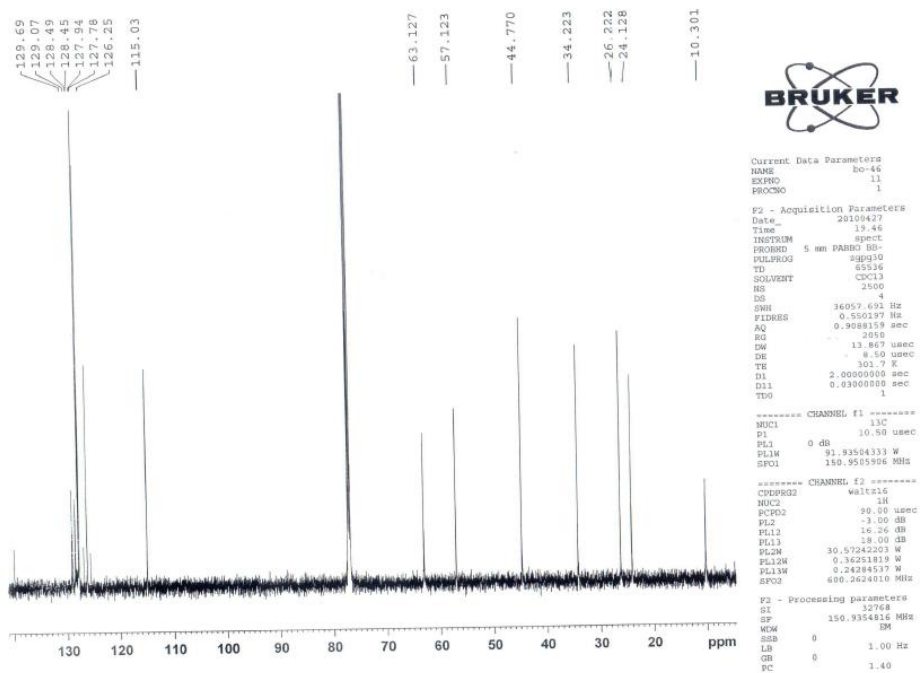
¹H NMR (600MHz, CD₃Cl):

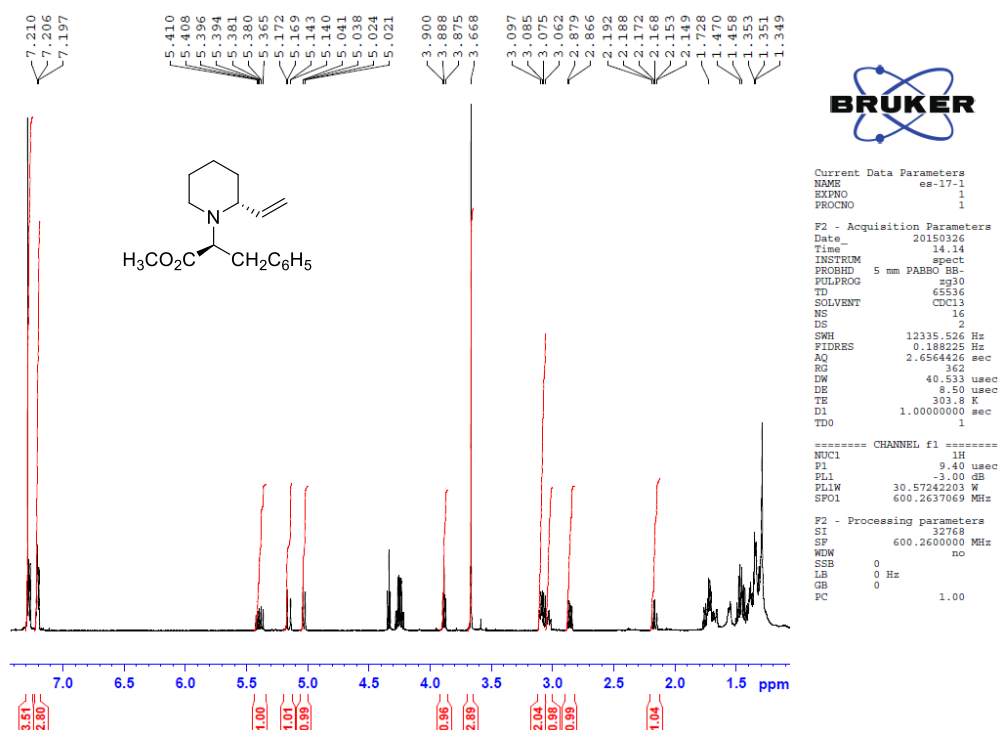
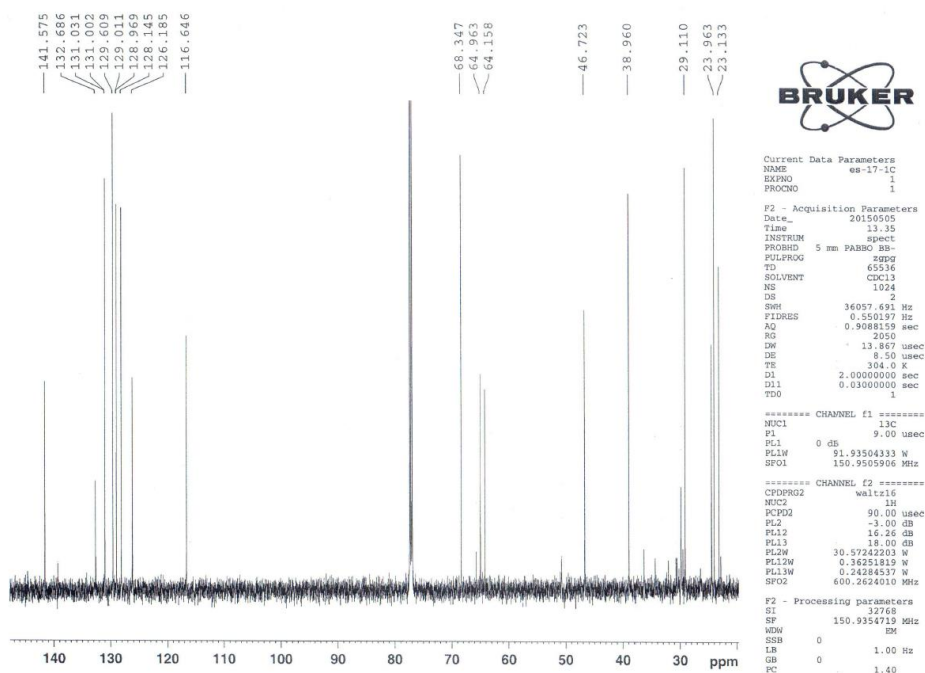


¹³C NMR (150MHz, CD₃Cl):



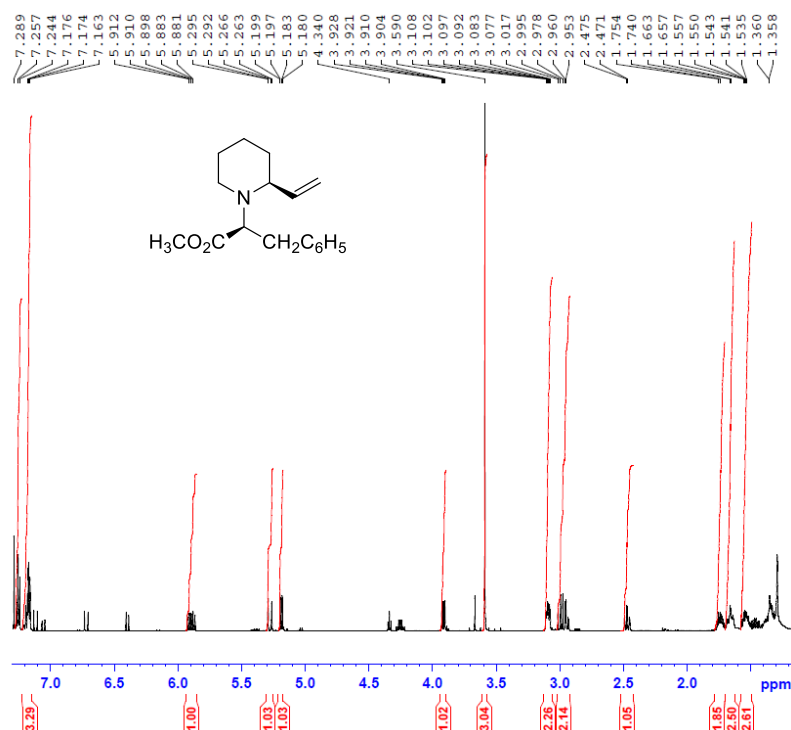
The ^1H and ^{13}C NMR of **7a** ^1H NMR (600MHz, CD_3Cl): ^{13}C NMR (150MHz, CD_3Cl):

The ^1H and ^{13}C NMR of 6b ^1H NMR (600MHz, CD_3Cl): ^{13}C NMR (150MHz, CD_3Cl):

The ^1H and ^{13}C NMR of **6c** ^1H NMR (600MHz, CD_3Cl): ^{13}C NMR (150MHz, CD_3Cl):

The ¹H and ¹³C NMR of 7c

¹H NMR (600MHz, CD₃Cl):



```

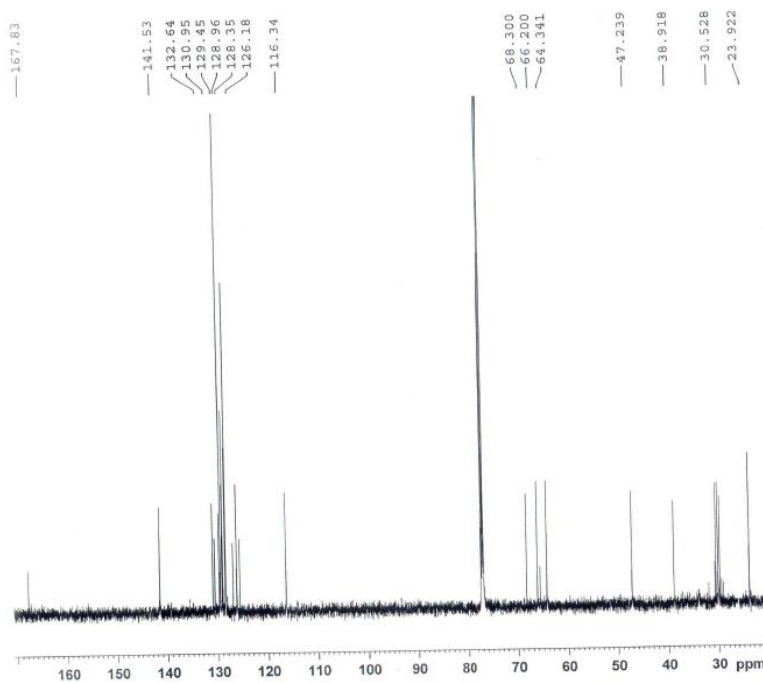
Current Data Parameters
NAME          es-17-2
EXPNO         1
PROCNO        1

F2 - Acquisition Parameters
Date_         20150326
Time          14.19
INSTRUM       spect
PROBHD        5 mm PABBO BB-
PULPROG       zg30
TD            65536
SOLVENT       CDCl3
NS            16
DS            2
SWH           12335.526 Hz
FIDRES        0.188235 Hz
AQ           2.6564426 sec
RG            144
DW           40.533 usec
DE           8.50 usec
TE           303.8 K
D1           1.00000000 sec
TDO           1

===== CHANNEL f1 =====
NUC1          1H
P1            9.40 usec
PL1           -3.00 dB
PL1W         30.57242203 W
SFO1         600.2637069 MHz

F2 - Processing parameters
SI            32768
SF           600.2600000 MHz
WDW           no
SSB           0
LB           0 Hz
GB           0
PC            1.00
    
```

¹³C NMR (150MHz, CD₃Cl):



```

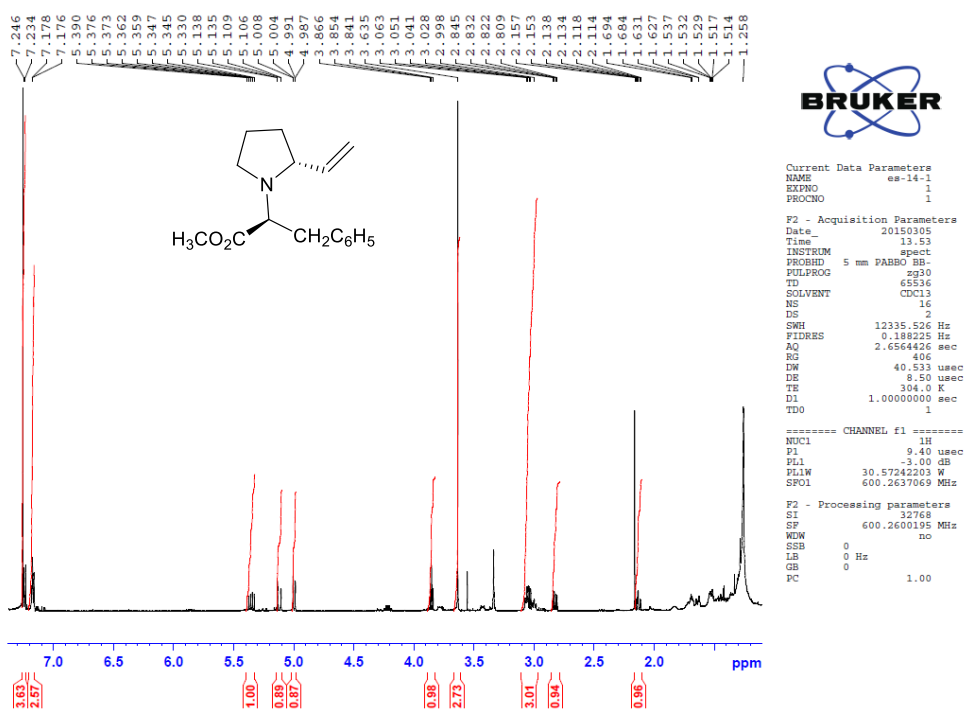
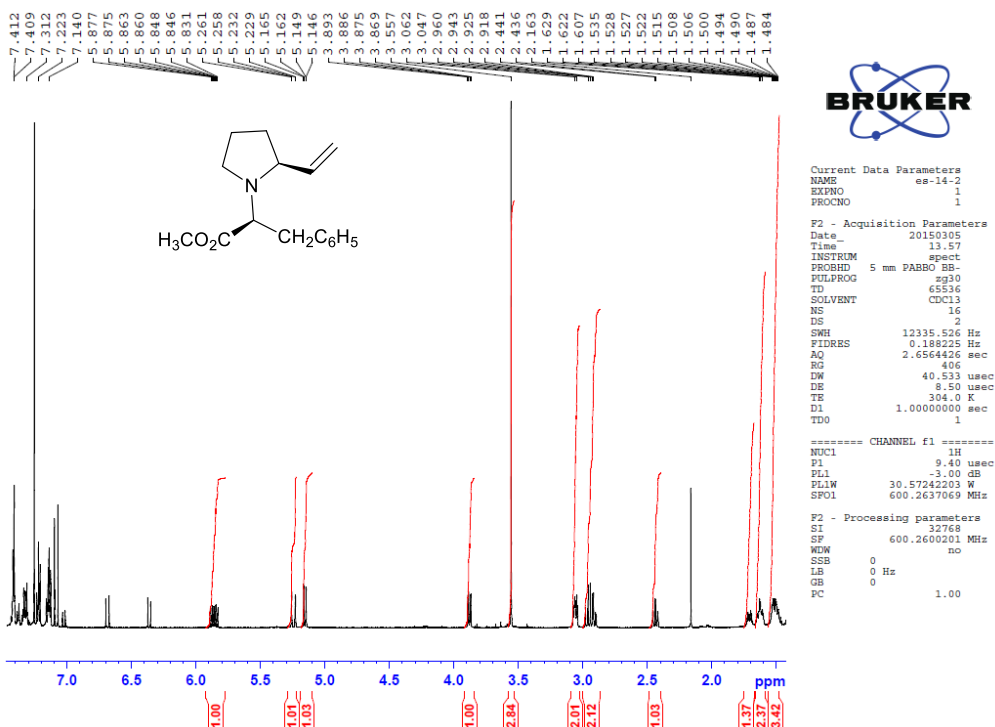
Current Data Parameters
NAME          es-17-2
EXPNO         10
PROCNO        1

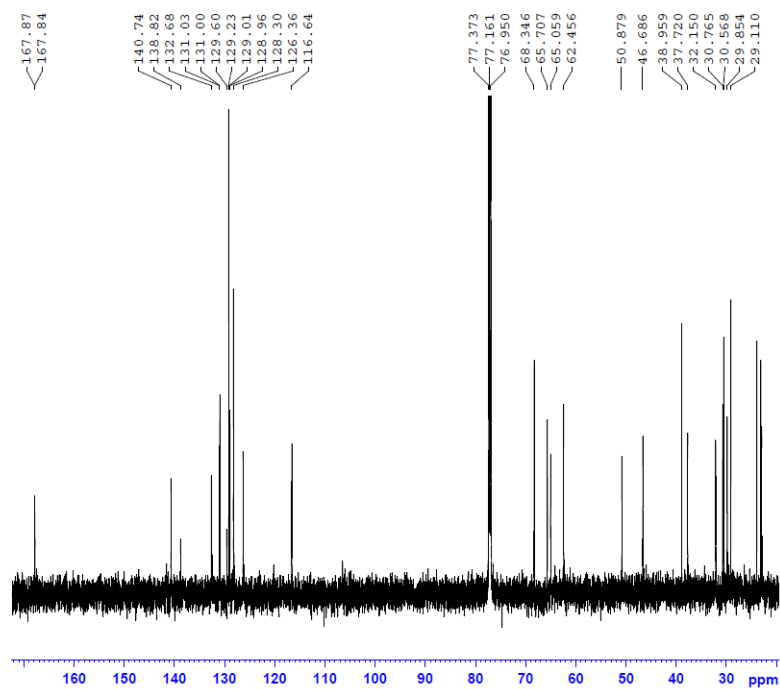
F2 - Acquisition Parameters
Date_         20150505
Time          18.51
INSTRUM       spect
PROBHD        5 mm PABBO BB-
PULPROG       zgpg30
TD            65536
SOLVENT       CDCl3
NS            1024
DS            4
SWH           36057.691 Hz
FIDRES        0.550197 Hz
AQ           0.9088159 sec
RG            2050
DW           13.867 usec
DE           8.50 usec
TE           304.0 K
D1           2.00000000 sec
D11          0.03000000 sec
TDO           1

===== CHANNEL f1 =====
NUC1          13C
P1           10.50 usec
PL1           0 dB
PL1W         91.93504333 W
SFO1         150.9859306 MHz

===== CHANNEL f2 =====
CHRG002      waitz16
NUC2          1H
PCPD2        90.00 usec
PL2           -3.00 dB
PL12         16.26 dB
PL13         18.00 dB
PL1W         30.57242203 W
PL12W        0.36251819 W
PL13W        0.24284837 W
SFO2         600.2624610 MHz

F2 - Processing parameters
SI            32768
SF           150.9354789 MHz
WDW           EM
SSB           0
LB           1.00 Hz
GB           0
PC            1.40
    
```

The ^1H and ^{13}C NMR of **6d** and **7d** ^1H NMR (600MHz, CD_3Cl) of **6d**: ^1H NMR (600MHz, CD_3Cl) of **7d**:

¹³C NMR (150MHz, CD₃Cl) of **6d** and **7d**:

```

Current Data Parameters
NAME          es-19-2
EXPRO        11
PROCNO       1

F2 - Acquisition Parameters
Date_         20190423
Time          20.56
INSTRUM      spect
PROBHD       5 mm PABBO BB-
PULPROG      zgpg30
TD           65536
SOLVENT      CDCl3
NS           1024
DS           4
SWH          36057.691 Hz
FIDRES      0.550197 Hz
AQ          0.9082159 sec
RG          2050
EW          13.867 usec
DE          8.50 usec
TE          304.0 K
D1          2.0000000 sec
D11         0.0300000 sec
TDO         1

***** CHANNEL f1 *****
NUC1         13C
P1           10.50 usec
PL1          0 dB
PL1W         91.93504303 W
SFO1         150.905906 MHz

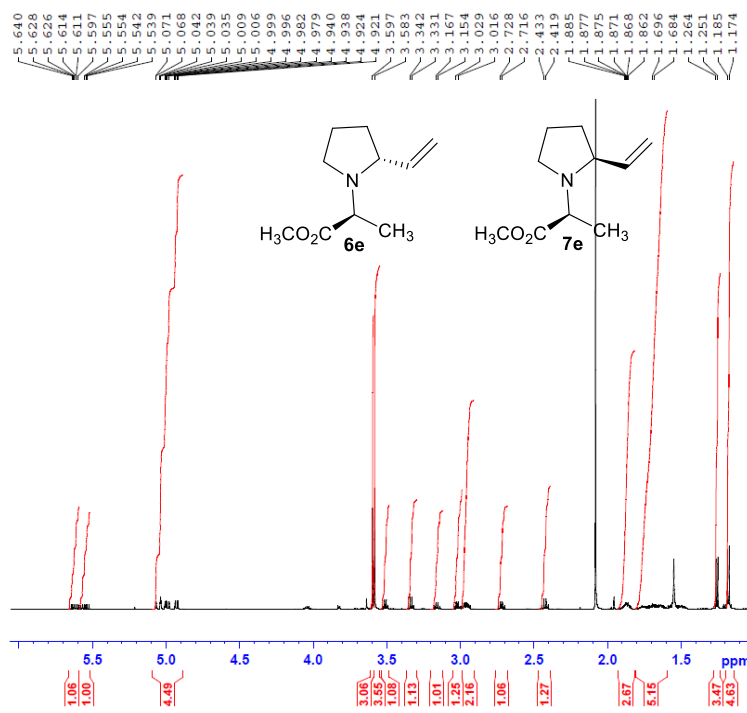
***** CHANNEL f2 *****
CDEPRG2     wait126
NUC2         1H
PCPD2       90.00 usec
PL2          -3.00 dB
PL12         16.26 dB
PL13         18.00 dB
PL1W         30.57242203 W
PL12W        0.36251819 W
PL13W        0.24284837 W
SFO2         600.2624010 MHz

F2 - Processing parameters
SI           32768
SF           150.9354720 MHz
WDW          EM
SSB          0
LB           1.00 Hz
GB           0
PC           1.40

```

The ¹H and ¹³C NMR of **6e** and **7e**

¹H NMR (600MHz, CD₃Cl):



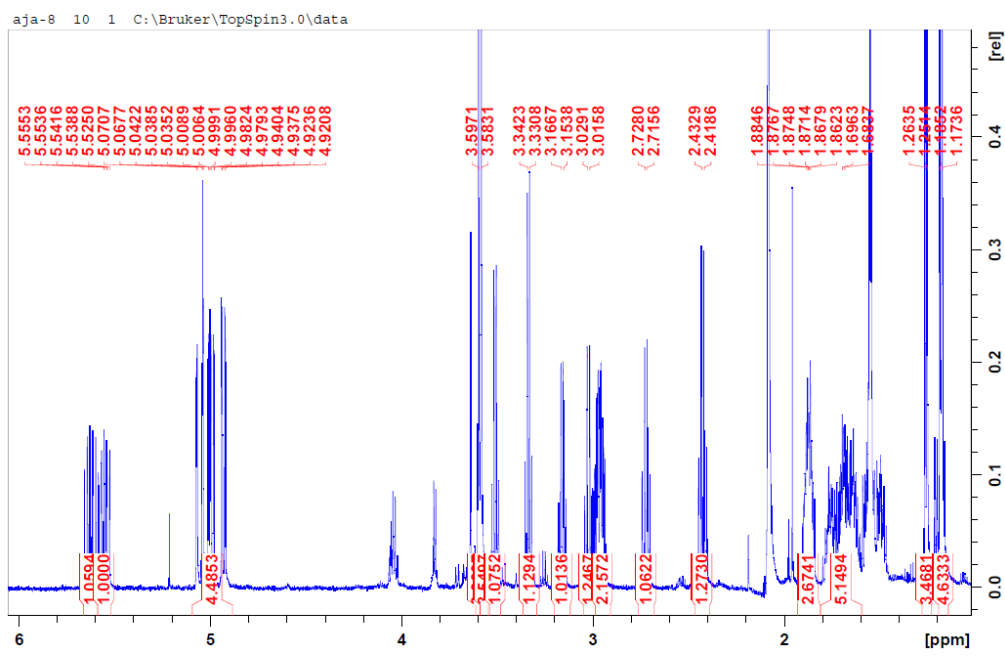
BRUKER

Current Data Parameters
 NAME aja-8
 EXPMO 10
 PROCNO 1

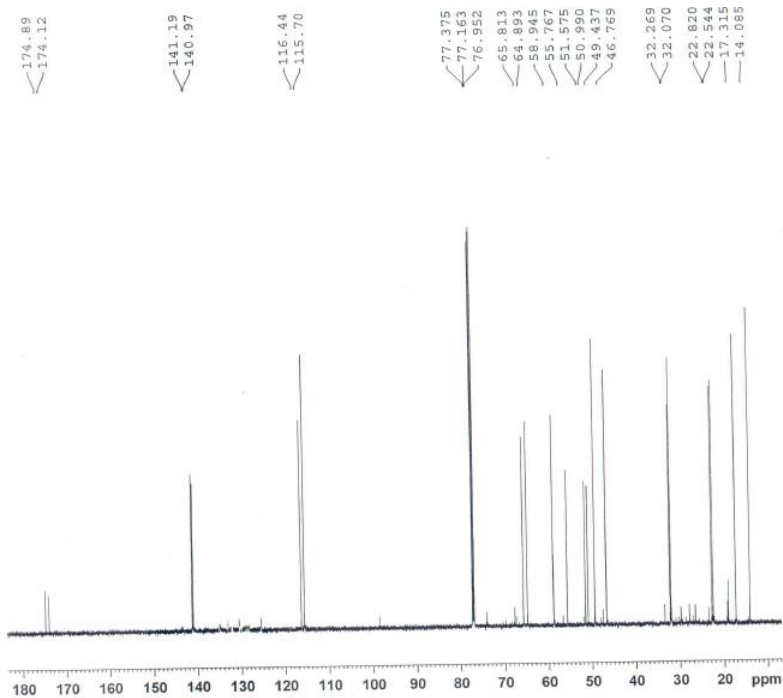
F2 - Acquisition Parameters
 Date_ 20160203
 Time 10.15
 INSTRUM spect
 PROBHD 5 mm PABBO BB-
 PULPROG zg30
 TH 6534
 SOLVENT CDCl3
 NS 16
 DS 2
 SWH 12335.526 Hz
 FIDRES 0.188823 Hz
 AQ 2.6564426 sec
 RG 256
 SW 40.533 usec
 DE 8.50 usec
 TE 303.0 K
 D1 1.0000000 sec
 TDO

===== CHANNEL f1 =====
 NUC1 1H
 P1 9.40 usec
 PL1 -1.00 dB
 PL1W 30.57242203 W
 SFO1 600.2637069 MHz

F2 - Processing parameters
 SI 32768
 SF 600.2600648 MHz
 MDW no
 SSB 0
 LB 0 Hz
 GB 0
 PC 1.00



¹³C NMR (150MHz, CD₃Cl) of 6e and 7e:



```

Current Data Parameters
NAME          aja-2a
EXPRO        4
PROCNO       1

F2 - Acquisition Parameters
Date_        20151120
Time         12.38
INSTRUM      spect
PROBHD       5 mm PABBO BB-
PULPROG      zgpg3
TD           65536
SOLVENT      CDCl3
NS           1256
DS           4
SFO1         36057.691 Hz
FIDRES       0.550197 Hz
AQ           0.9089159 sec
RG           2050
DM           13.867 usec
DE           8.50 usec
TE           303.5 K
D1           2.00000000 sec
D11          0.03000000 sec
TDO         1

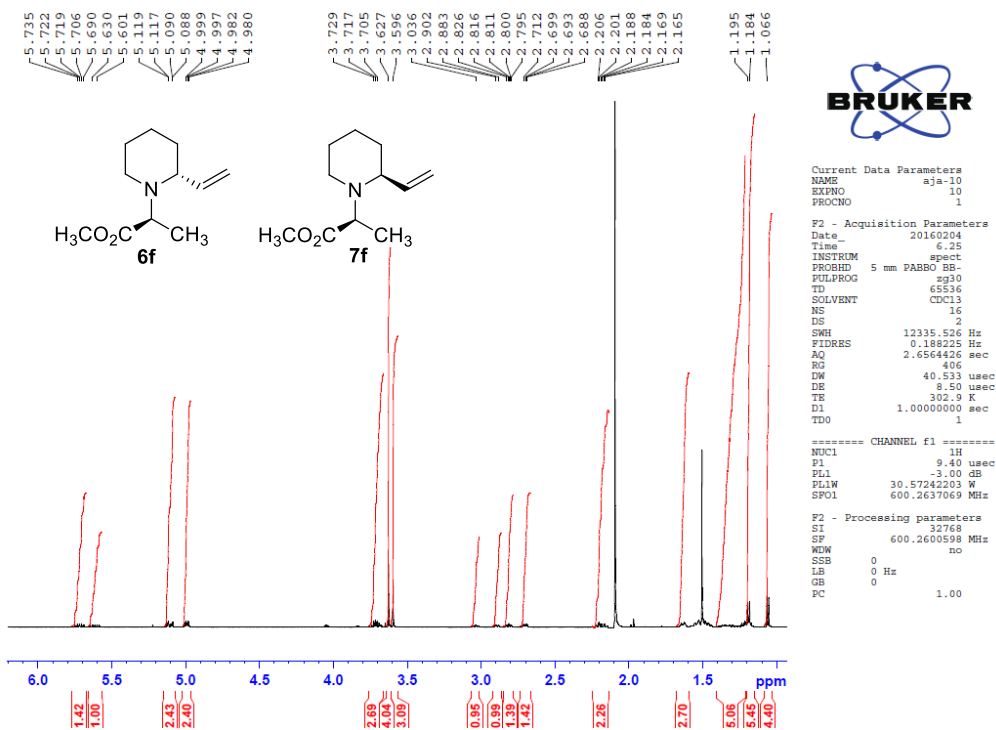
----- CHANNEL f1 -----
NUC1         13C
P1           13C
PL1         0 dB
PL1W        91.93504333 W
SFO1        150.9505906 MHz

----- CHANNEL f2 -----
CPDPRG2      waltz26
NUC2         1H
PCPD2       90.00 usec
PL2         3.00 dB
PL12        16.26 dB
PL13        18.00 dB
PL2W        30.57242203 W
PL12W       0.36251819 W
PL13W       0.24284537 W
SFO2        600.2624010 MHz

F2 - Processing parameters
SI           32768
SF           150.9354761 MHz
MSW         3M
SBB         0
LB          1.00 Hz
GB         0
PC          1.40
    
```

The ¹H and ¹³C NMR of **6f** and **7f**

¹H NMR (600MHz, CD₃Cl):



```

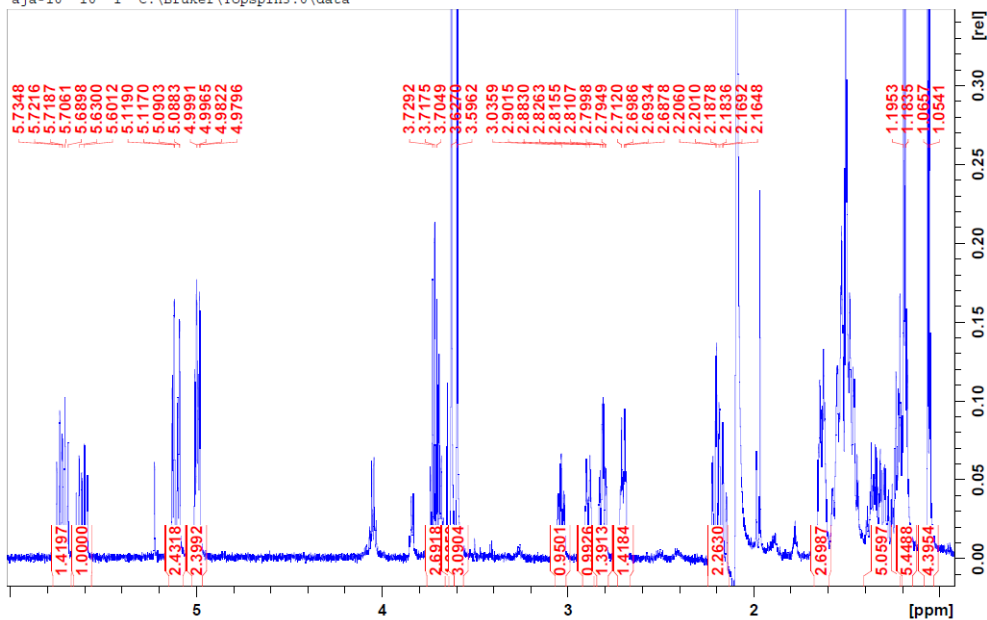
Current Data Parameters
NAME      aja-10
EXPRO    10
PROCNO   1

F2 - Acquisition Parameters
Data      20160204
Time      6.25
INSTRUM  spect
PROBHD   5 mm PABBO BB-
PULPROG  zg30
TD        65536
SOLVENT  CDCl3
NS        16
DS        2
SWH      12335.526 Hz
FIDRRS   0.188225 Hz
AQ        2.6564426 sec
RG        406
DW        40.533 usec
DE        8.50 usec
TE        302.2 K
D1        1.00000000 sec
TDO       1

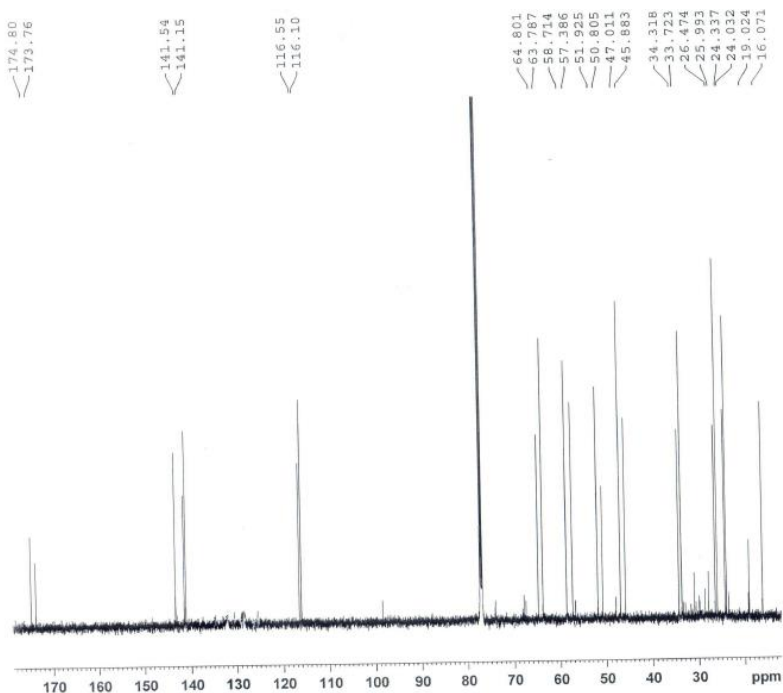
===== CHANNEL f1 =====
NUC1      1H
P1        9.40 usec
PL1       -3.00 dB
PL1W      30.57242203 W
SFO1      600.2637069 MHz

F2 - Processing parameters
SI        32768
SF        600.2600598 MHz
WDW       no
SSB       0
LB        0 Hz
GB        0
PC        1.00
    
```

aja-10 10 1 C:\Bruker\TopSpin3.0\data



¹³C NMR (150MHz, CD₃Cl) of **6f** and **7f**:



```

Current Data Parameters
NAME      aja-1a
EXPNO    10
PROCNO   1

F2 - Acquisition Parameters
Date_    20151117
Time     22.41
INSTRUM  spect
PROBHD   5 mm PABBO BB-
PULPROG  zgpg30
TD       65536
SOLVENT  CDCl3
NS       2048
DS       4
SFO1     36057.691 Hz
FIDRES   0.550197 Hz
AQ       0.9088133 sec
RG       2050
DM       13.867 usec
DE       8.54 usec
TE       303.0 K
D1       2.0000000 sec
D11      0.03000000 sec
TDO      1

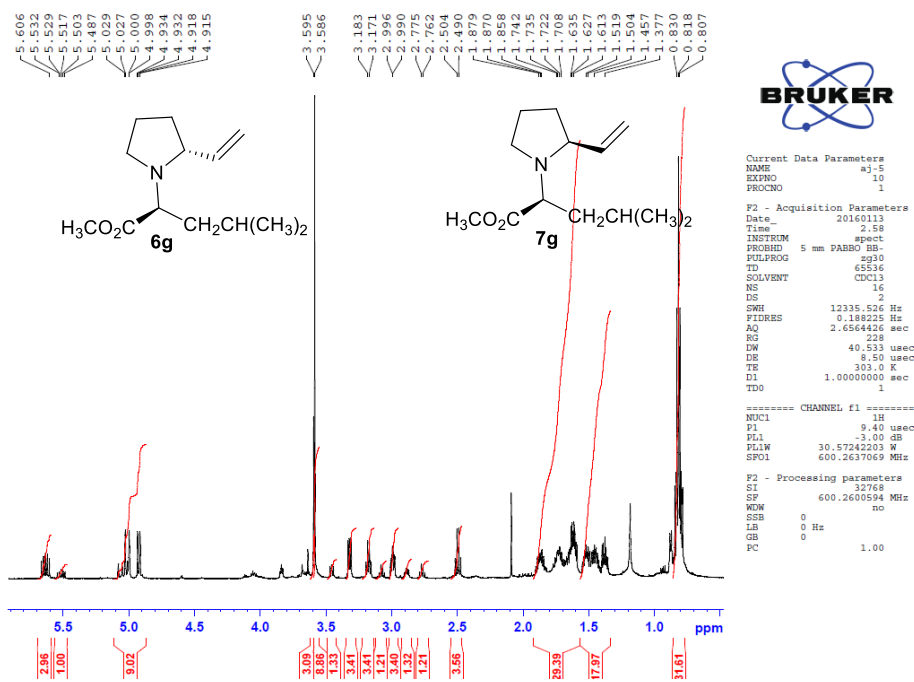
----- CHANNEL f1 -----
NUC1     13C
P1       10.50 usec
PL1      0 dB
PL1W     91.93504333 W
SFO1     150.9503906 MHz

----- CHANNEL f2 -----
CPDPRG2  waltz16
NUC2     1H
P2       90.00 usec
PL2      -3.00 dB
PL12     16.26 dB
PL13     18.00 dB
PL2W     30.57242203 W
PL1W     0.36251819 W
PL1W     0.24284937 W
SFO2     600.2624010 MHz

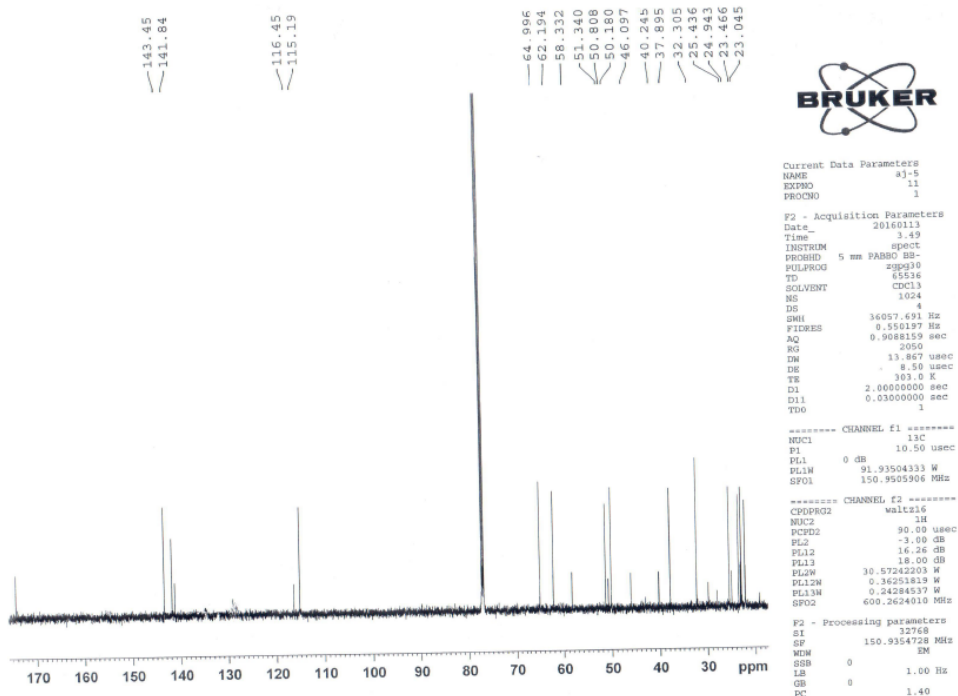
F2 - Processing parameters
SI       32768
SF       150.9354730 MHz
WDW      EM
SSB      0
LB       1.00 Hz
GB       0
PC       1.40
    
```

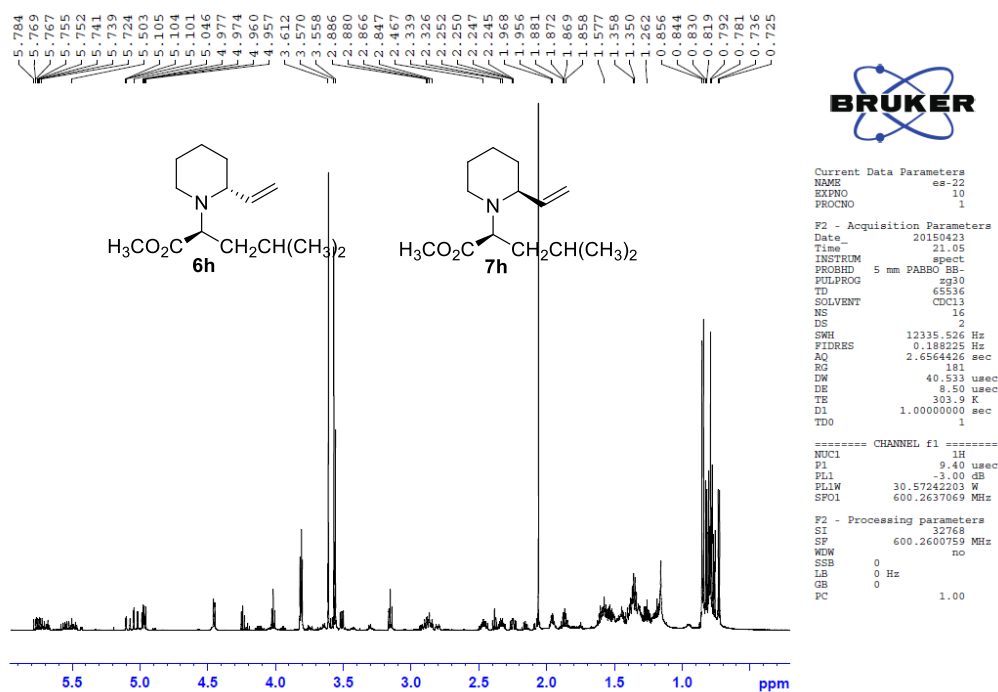
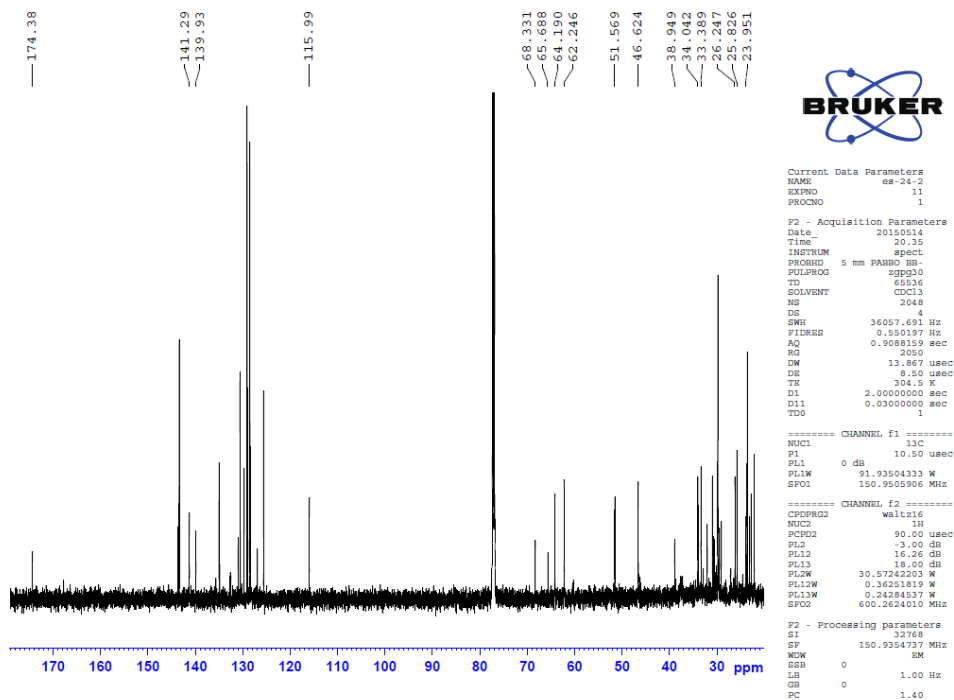
The ¹H and ¹³C NMR of **6g** and **7g**

¹H NMR (600MHz, CD₃Cl):



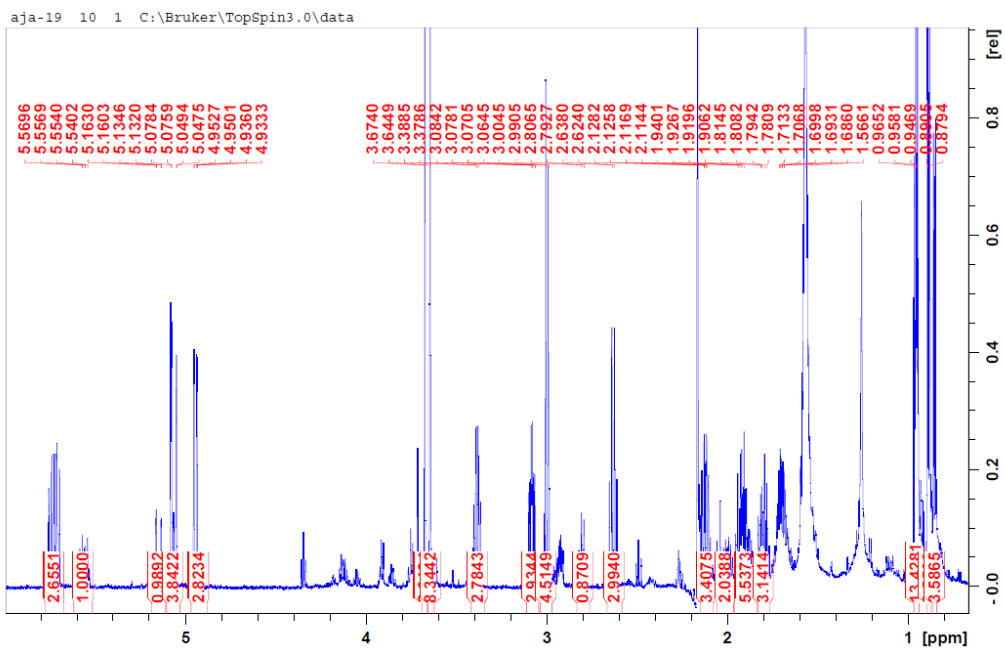
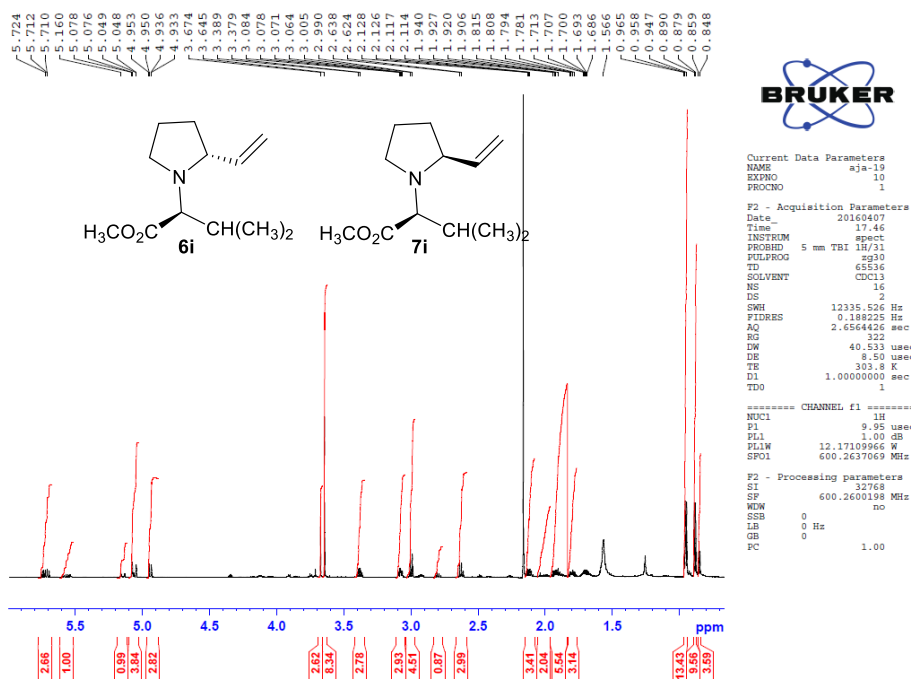
¹³C NMR (150MHz, CD₃Cl):



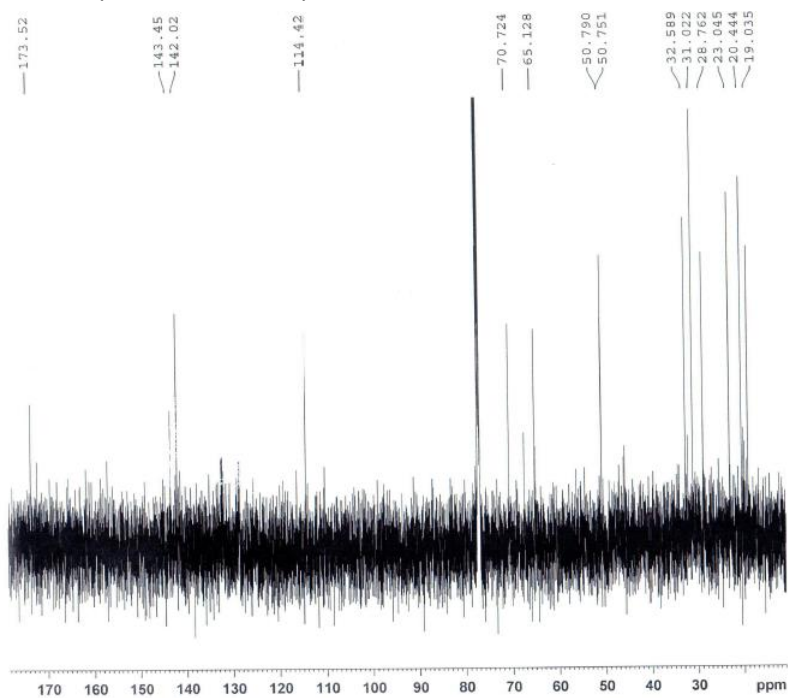
The ^1H and ^{13}C NMR of **6h** and **7h** ^1H NMR (600MHz, CD_3Cl): ^{13}C NMR (150MHz, CD_3Cl):

The ¹H and ¹³C NMR of **6i** and **7i**

¹H NMR (600MHz, CD₃Cl):



¹³C NMR (150MHz, CD₃Cl) of **6i** and **7i**:



```

Current Data Parameters
NAME          aja-19
EXPNO         11
PROCNO        1

F2 - Acquisition Parameters
Date_         20160407
Time          18.38
INSTRUM       spect
PROBHD        5 mm TBI 1H/13
PULPROG       zgpg30
TD            65536
SOLVENT       CDCl3
NS            1024
DS            4
SWH           36057.691 Hz
FIDRES        0.550197 Hz
AQ            0.9088159 sec
RG            2050
DM            13.867 usec
DE            8.50 usec
TE            304.3 K
D1            2.0000000 sec
D11           0.0300000 sec
TD0           1

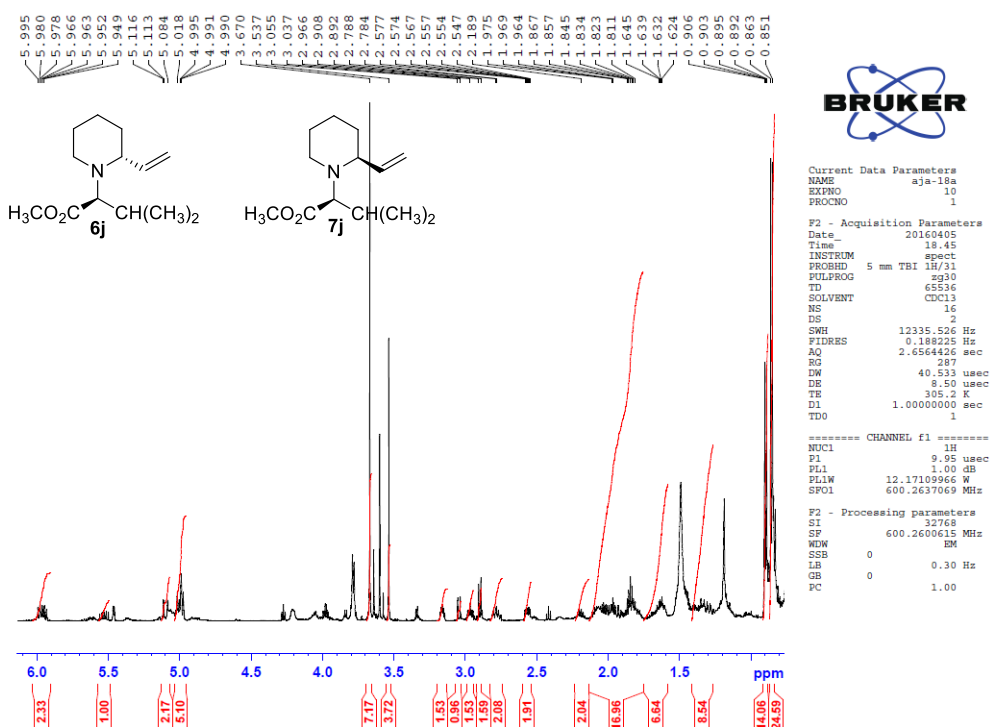
----- CHANNEL f1 -----
NUC1          13C
P1            17.00 usec
PL1           -2.40 dB
PL1W          159.76480103 W
SFO1          150.9505906 MHz

----- CHANNEL f2 -----
CPDPRG2       waltz16
NUC2          1H
PCPD2         95.00 usec
PL2           1.00 dB
PL12          20.21 dB
PL13          22.00 dB
PL1W          12.17109966 W
PL12W         0.14599228 W
PL13W         0.09667849 W
SFO2          600.2624010 MHz

F2 - Processing parameters
SI            32768
SF            150.9354738 MHz
WDW           EM
SSB           0
LB            1.00 Hz
GB            0
PC            1.40
    
```

The ¹H NMR of **6j** and **7j**

¹H NMR (600MHz, CD₃Cl):



The ¹H NMR of **8**

