

## Supplementary Material

### Total synthesis of amorfrutin B via a Pd-catalyzed regioselective geranyl migration-decarboxylation-cycloaromatization cascade

Chao Wang,<sup>\*a</sup> Yajun Kong,<sup>a</sup> and Hongyun Qiao<sup>b</sup>

<sup>a</sup> School of Material Science and Engineering, Southwest University of Science and Technology, Mianyang 621010, P. R. China

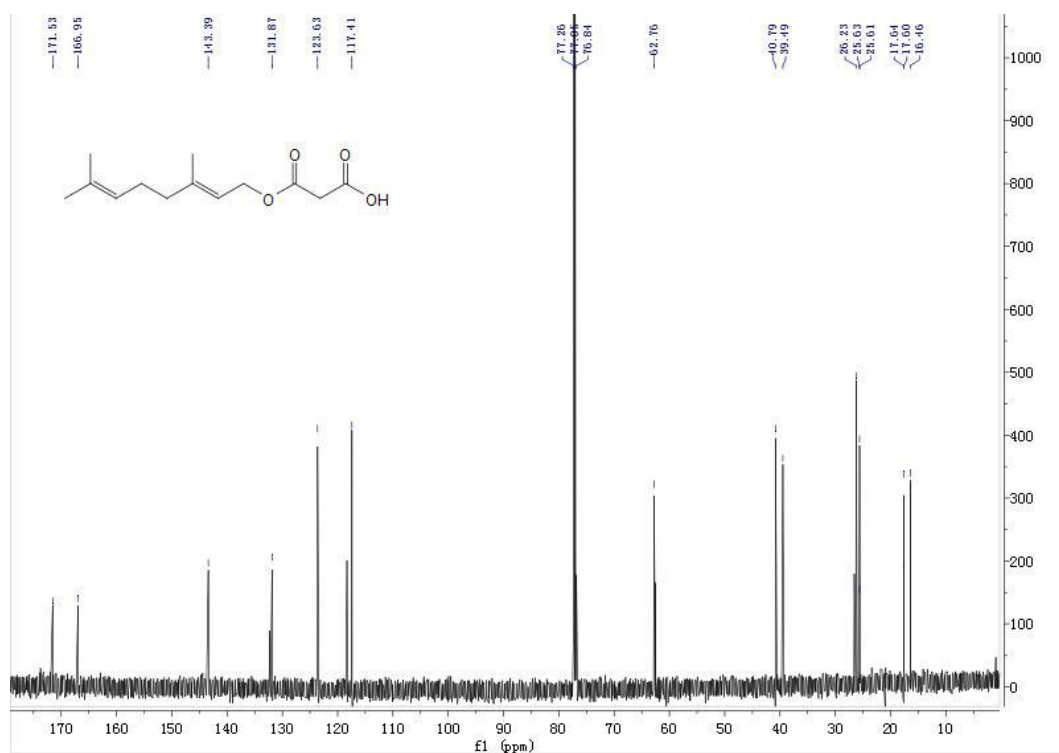
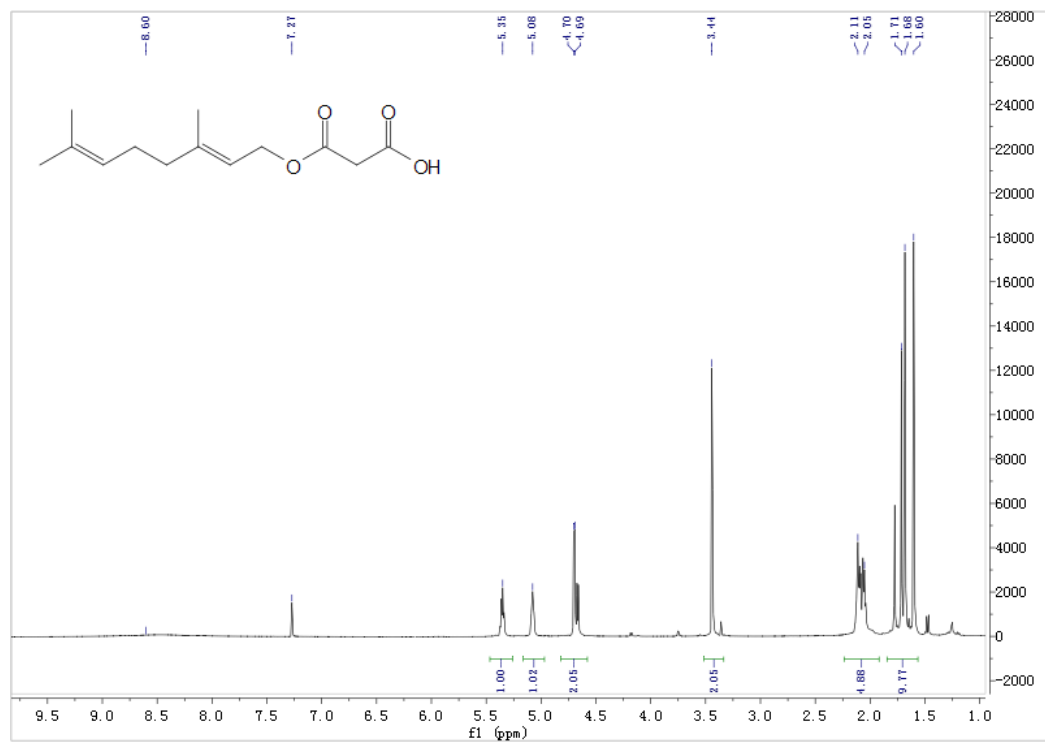
<sup>b</sup> Research & Development Department, ChemPartner Inc., Zhangjiang Hi-Tech Park, Shanghai 201 203, China

E-mail: [cwang2004@gmail.com](mailto:cwang2004@gmail.com)

#### Table of Contents

1. NMR and assignment of compound <b>3</b>	S2
2. NMR and assignment of compound <b>6</b>	S4
3. NMR and assignment of compound <b>9</b>	S6
4. NMR and assignment of compound <b>10</b>	S8
5. NMR and assignment of compound <b>13</b>	S10
6. NMR and assignment of Amorfrutin B	S12

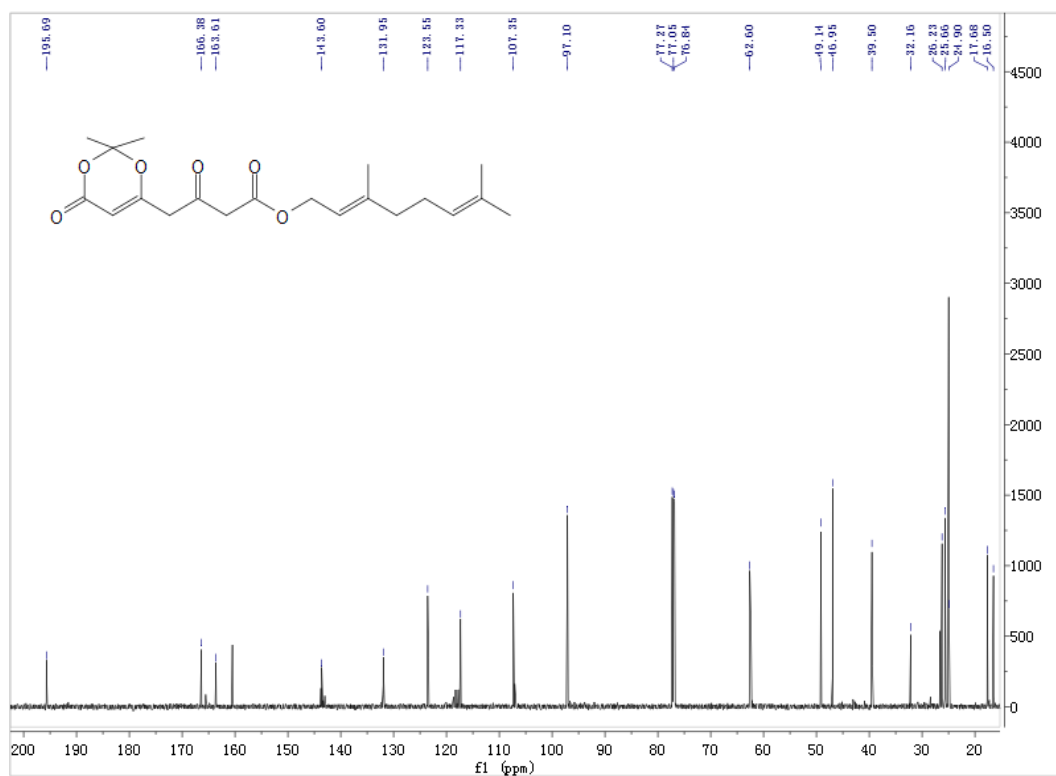
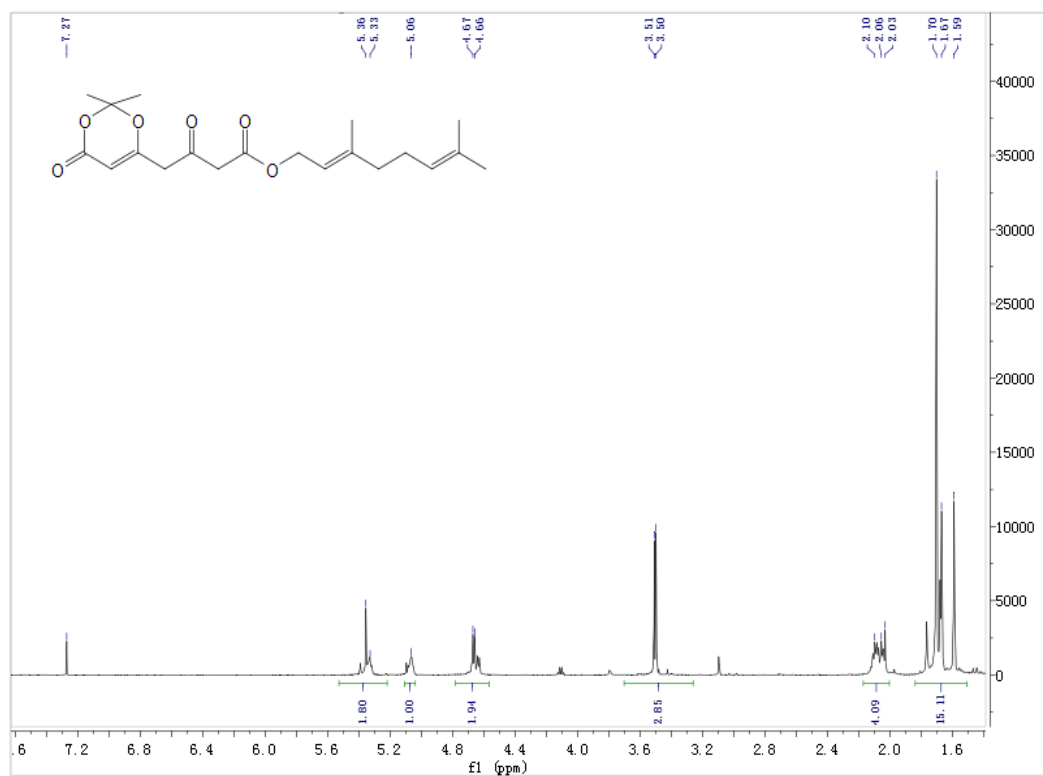
Compound 3



$\delta$ /ppm	$^1\text{H}$ Assignment
8.60 (brs, 1H)	COOH
5.35 (t, $J = 7.3$ Hz, 1H)	CH <sub>2</sub> CH <sub>3</sub> C=CH
5.08 (t, $J = 6.1$ Hz, 1H)	(CH <sub>3</sub> ) <sub>2</sub> C=CH
4.70 (d, $J = 7.2$ Hz, 2H)	OCH <sub>2</sub>
3.44 (s, 2H)	COCH <sub>2</sub> CO
2.13 - 2.05 (m, 4H)	C=CHCH <sub>2</sub> CH <sub>2</sub> CH=CH
1.71 (s, 3H)	CH=CCH <sub>3</sub>
1.68 (s, 3H), 1.60 (s, 3H)	C=CCH <sub>3</sub> CH <sub>3</sub>

$\delta$ /ppm	$^{13}\text{C}$ Assignment
171.5	COOH
166.9	COOR
143.4, 131.8, 122.2, 117.4	(CH <sub>3</sub> ) <sub>2</sub> C=CH, (CH <sub>3</sub> )RC=CH
62.8	OCH <sub>2</sub>
40.8	CO-CH <sub>2</sub> -CO
39.5, 26.2	C=CCH <sub>2</sub> CH <sub>2</sub> C=C
25.6, 17.6, 16.5	C=CC(CH <sub>3</sub> ) <sub>2</sub> , C=CCH <sub>3</sub> R

Compound 6

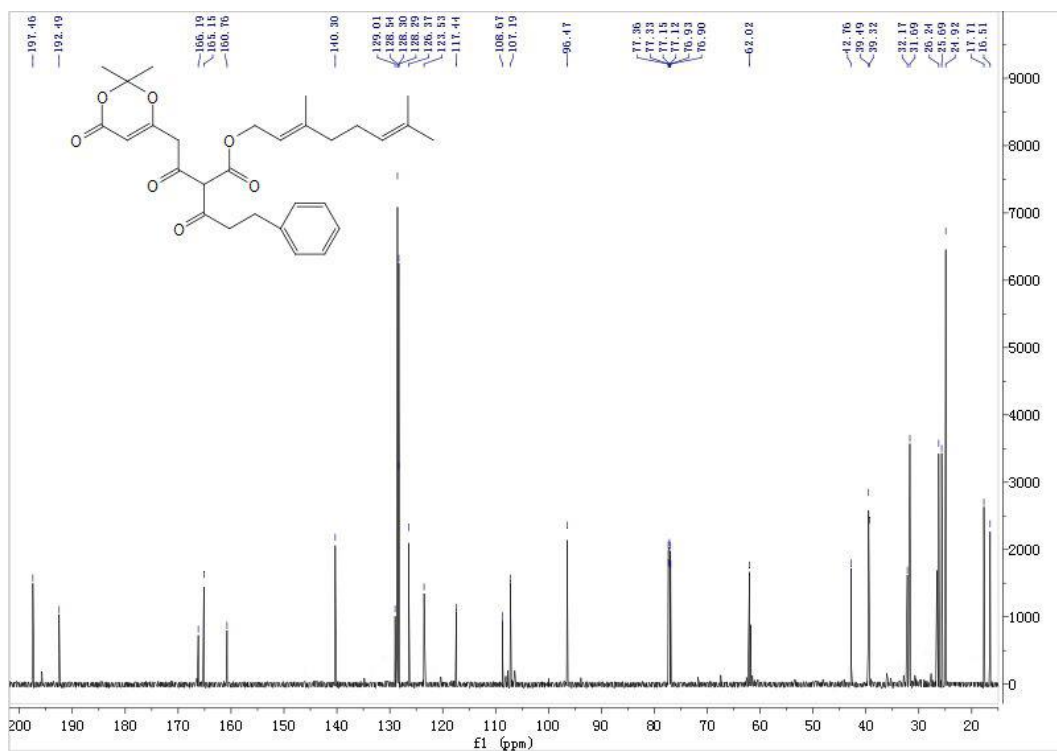
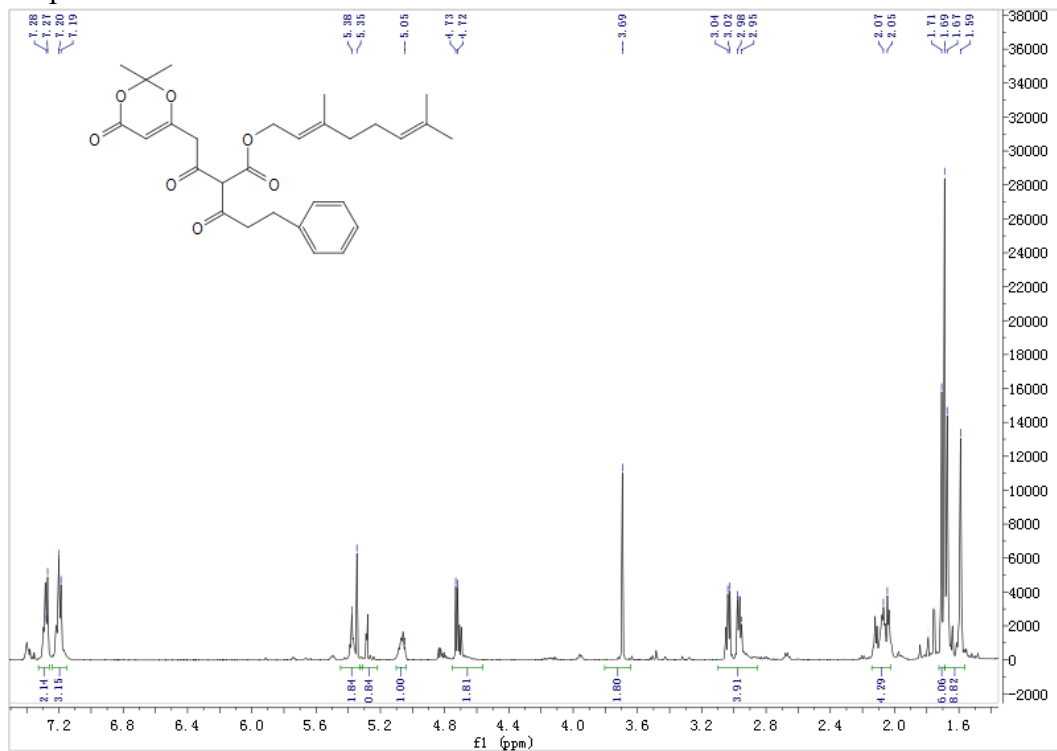


$\delta$ /ppm	$^1\text{H}$ Assignment
5.36 (s, 1H)	$\text{CH}_3\text{C}=\text{CH}$
5.35 (mc, 1H)	$(\text{CH}_3)_2\text{C}=\text{CH}$
5.06 (mc, 1H)	$\text{OC}=\text{CHCOO}$
4.67, 4.66 (d, 2H, $J = 7.2$ Hz)	$\text{OCH}_2$
3.51 (s, 2H)	$\text{COCH}_2\text{CO}$
3.50 (s, 2H)	$\text{COCH}_2\text{C}=\text{CH}$
2.10 - 2.05 (m, 4H)	$\text{C}=\text{CHCH}_2\text{CH}_2$
1.70 (s, 9H)	$\text{O}_2\text{C}(\text{CH}_3)_2, \text{C}=\text{CCH}_3$
1.67 (s, 3H), 1.59 (s, 3H)	$\text{C}=\text{C}(\text{CH}_3)_2$

$\delta$ /ppm	$^{13}\text{C}$ Assignment
195.7	$\text{CH}_2\text{COCH}_2$
166.4	$\text{COCH}_2\text{COOR}$
163.6	$\text{CHCOOC}(\text{CH}_3)_2$
160.5	$\text{COCH}_2\text{CO}$
143.6, 123.5	$\text{CH}=\text{CCH}_3\text{R}$
131.9, 117.3	$\text{CH}=\text{C}(\text{CH}_3)_2$
107.3	$\text{O}_2\text{C}(\text{CH}_3)_2$
97.1	$\text{OC}=\text{CHCOO}$
62.6	$\text{OCH}_2$
49.1, 46.9	$\text{COCH}_2\text{CO}, \text{C}=\text{CCH}_2\text{CO}$
39.5, 32.2	$\text{C}=\text{CCH}_2\text{CH}_2\text{C}=\text{C}$
26.2, 25.7, 24.9, 17.7, 16.5	$\text{OC}(\text{CH}_3)_2, \text{C}=\text{C}(\text{CH}_3)_2, \text{C}=\text{CCH}_3\text{R}$

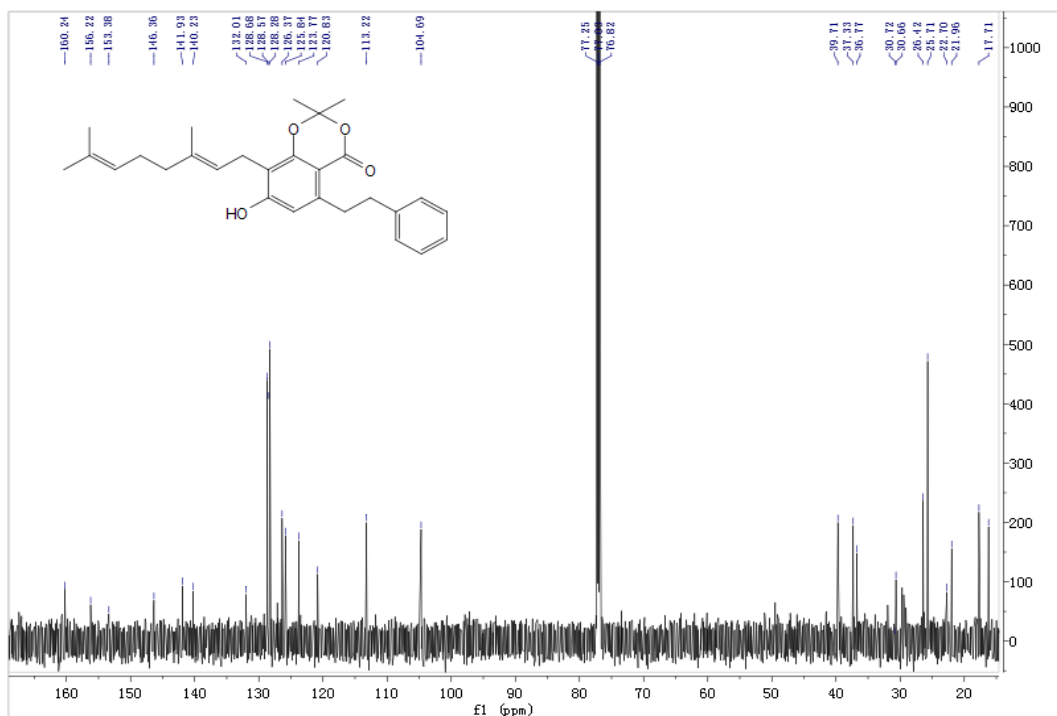
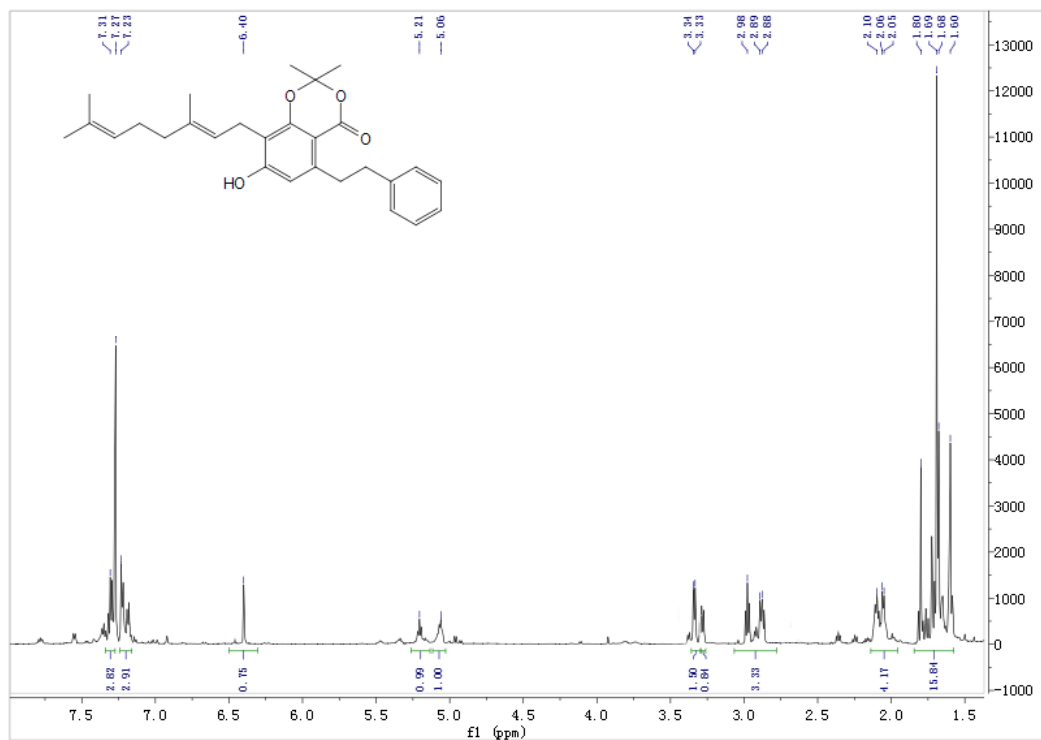
Compound 9



$\delta$ /ppm	$^1\text{H}$ Assignment
7.28, 7.27, 7.20, 7.19 (m, 5H)	Ar-H
5.38 (m, 1H)	$\text{CH}_3\text{C}=\text{CH}$
5.35 (s, 1H)	$(\text{CH}_3)_2\text{C}=\text{CH}$
5.28 (s, 1H)	COCCOO
5.05 (mc, 1H)	OC=CHCOO
4.73 (d, 2H, $J = 7.4$ Hz)	$\text{OCH}_2\text{CH}=\text{C}$
3.69 (s, 2H)	COCH <sub>2</sub> CO
3.04 - 2.95 (m, 4H)	COCH <sub>2</sub> CH <sub>2</sub> Ar
2.07 - 2.05 (m, 4H)	$\text{C}=\text{CHCH}_2\text{CH}_2\text{C}=\text{C}$
1.71 - 1.59 (s, 15H)	$\text{O}_2\text{C}(\text{CH}_3)_2$ , $\text{C}=\text{CCH}_3$ , $\text{C}=\text{C}(\text{CH}_3)_2$

$\delta$ /ppm	$^{13}\text{C}$ Assignment
197.5	$\text{CH}_2\text{C}=\text{OCHCOCH}_2\text{CH}_2\text{Ar}$
192.5	$\text{ArCH}_2\text{CH}_2\text{C}=\text{O}$
165.2	$\text{COOCH}_2=\text{CRCH}_3$
165.1	$\text{CHCOOC}(\text{CH}_3)_2$
160.8	$\text{CH}=\text{CO}$
140.3	$\text{Ar}(\text{C})\text{CH}_2\text{CH}_2$
129.0, 117.4	$\text{CH}=\text{C}(\text{CH}_3)\text{R}$
128.5, 128.3, 128.2	$\text{Ar}(\text{C})$
123.5, 108.7	$\text{CH}=\text{C}(\text{CH}_3)_2$
107.2	$\text{O}_2\text{C}(\text{CH}_3)_2$
96.5	OC=CHCOO
62.0	COCH <sub>2</sub> COO
61.8	$\text{OCH}_2\text{CH}$
42.7	$\text{C}=\text{CCH}_2\text{CO}$
39.5, 31.7	$\text{C}=\text{CCH}_2\text{CH}_2\text{C}=\text{C}$
39.3, 32.2	$\text{ArCH}_2\text{CH}_2$
26.2, 25.7, 24.9, 17.7, 16.5	$\text{OC}(\text{CH}_3)_2$ , $\text{C}=\text{C}(\text{CH}_3)_2$ , $\text{C}=\text{CCH}_3\text{R}$

Compound 10

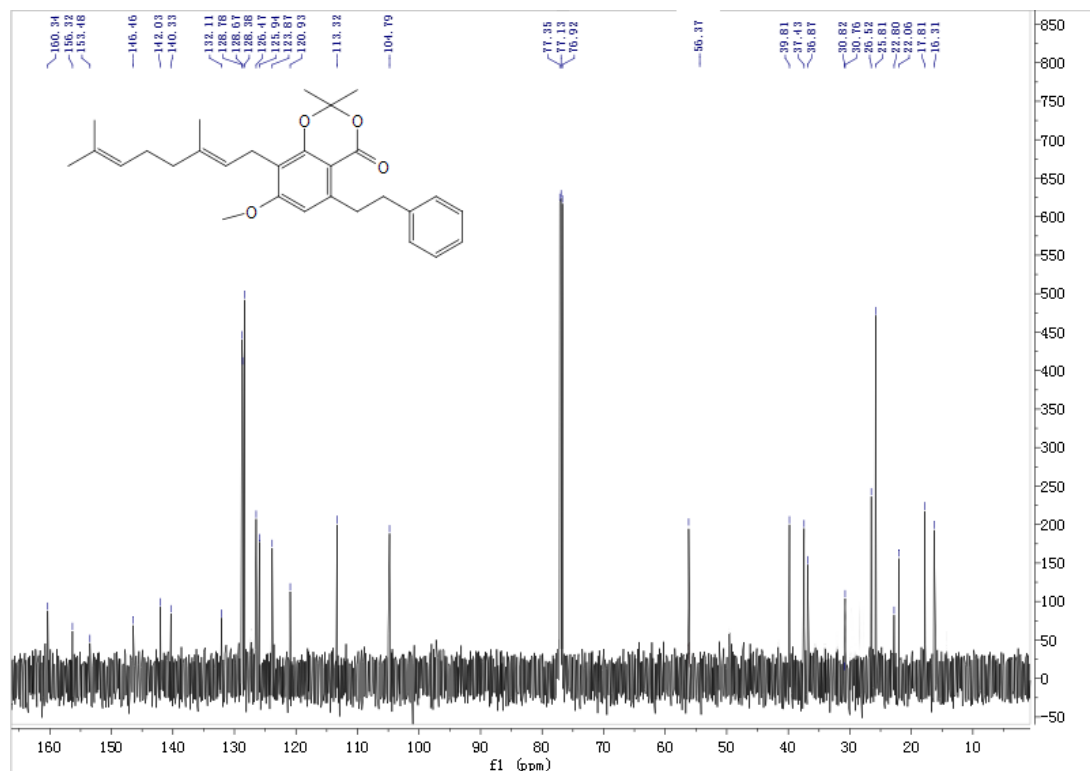
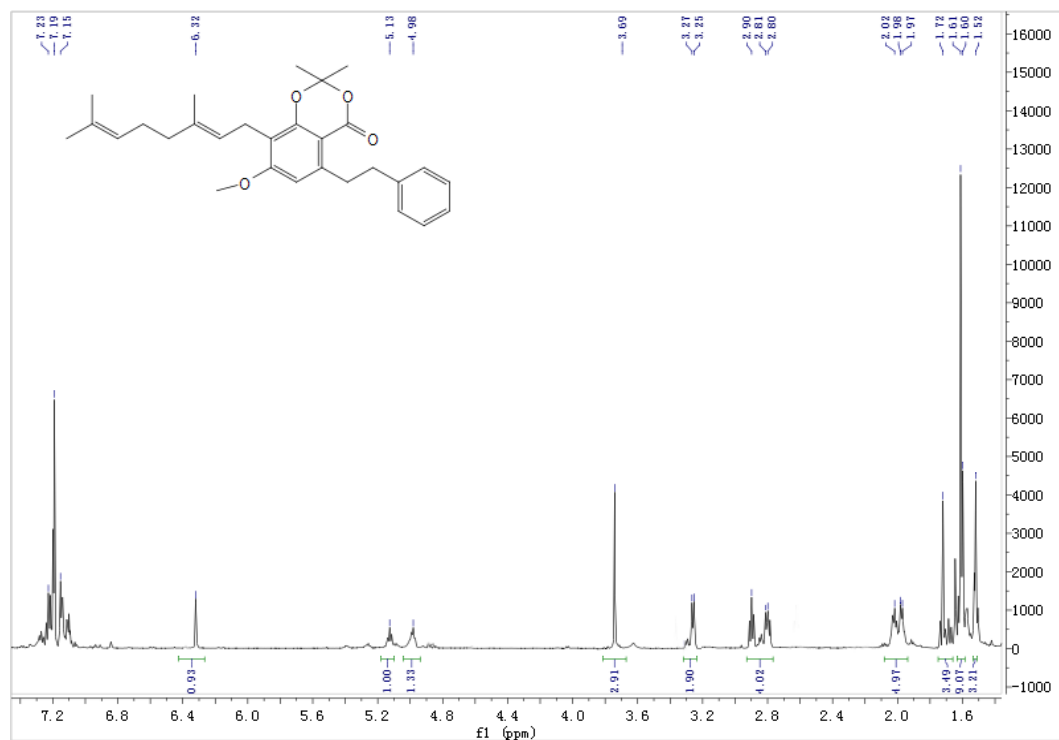




$\delta$ /ppm	$^1\text{H}$ Assignment
7.31 - 7.23 (m, 5H)	Ar- <b>H</b>
6.40 (s, 1H)	Ar- <b>H</b>
5.21 (t, 1H, $J = 7.2$ Hz)	RCH <sub>3</sub> C= <b>CH</b>
5.06 (t, 1H, $J = 7.2$ Hz)	(CH <sub>3</sub> ) <sub>2</sub> C= <b>CH</b>
3.34, 3.33 (d, 2H, $J = 7.3$ Hz)	ArCH <sub>2</sub> CH= <b>C</b>
2.98 - 2.88 (m, 4H)	ArCH <sub>2</sub> CH <sub>2</sub> Ar
2.10 - 2.05 (m, 4H)	C=CHCH <sub>2</sub> CH <sub>2</sub> C= <b>C</b>
1.80, 1.69, 1.68, 1.60 (s, 15H)	O <sub>2</sub> C(CH <sub>3</sub> ) <sub>2</sub> , C=CCH <sub>3</sub> , C=C(CH <sub>3</sub> ) <sub>2</sub> ,

$\delta$ /ppm	$^{13}\text{C}$ Assignment
160.2	Ar-COOR
156.2	Ar( <b>C</b> )-OH
152.4	Ar( <b>C</b> )-OC(CH <sub>3</sub> ) <sub>2</sub>
146.3, 125.8	CH=C(CH <sub>3</sub> )R
141.9, 140.2	Ar( <b>C</b> )-CH <sub>2</sub> CH <sub>2</sub> -Ar( <b>C</b> )
132.1, 126.4	CH=C(CH <sub>3</sub> ) <sub>2</sub>
128.7, 128.6, 128.3	Ar
122.8	Ar( <b>C</b> )-CH <sub>2</sub> C=C
120.8	Ar( <b>C</b> )-COOR
113.2	OC(CH <sub>3</sub> ) <sub>2</sub>
104.7	Ar( <b>C</b> )
39.7, 30.7	C=CCH <sub>2</sub> CH <sub>2</sub> C=C
37.5, 36.7	ArCH <sub>2</sub> CH <sub>2</sub> Ar
26.4, 17.7	C=C(CH <sub>3</sub> ) <sub>2</sub>
25.7	Ar-CH <sub>2</sub> -C=C
22.7, 21.9, 16.2	C(CH <sub>3</sub> ) <sub>2</sub> , C=CCH <sub>3</sub> R

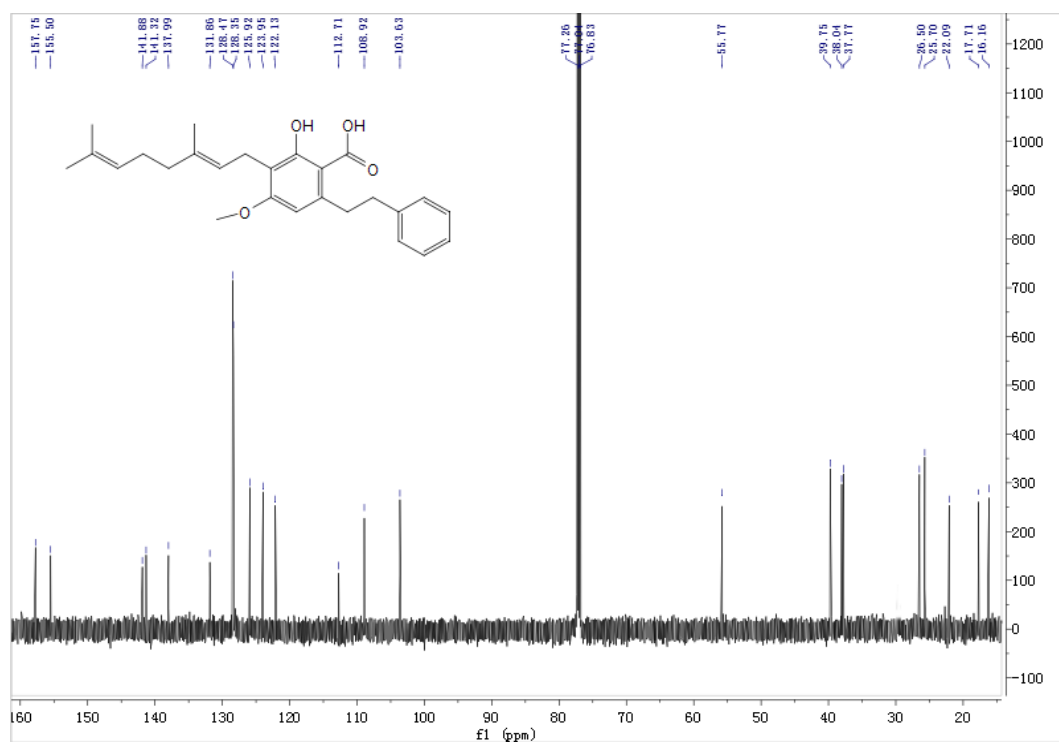
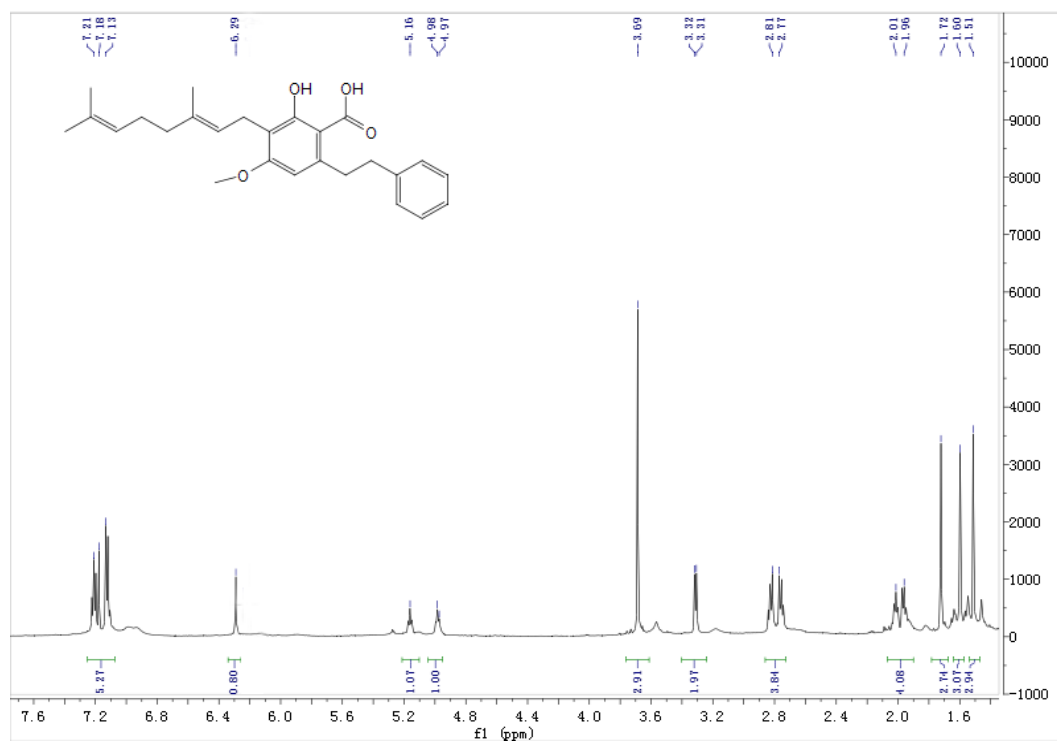
Compound 13



$\delta$ /ppm	$^1\text{H}$ Assignment
7.23, 7.19, 7.15 (m, 5H)	Ar-H
6.32 (s, 1H)	Ar-H
5.12 (t, 1H, $J = 7.2$ Hz)	$\text{RCH}_3\text{C}=\text{CH}$
4.98 (t, 1H, $J = 7.2$ Hz)	$(\text{CH}_3)_2\text{C}=\text{CH}$
3.78 (s, 3H)	$\text{COCH}_3$
3.27, 3.25 (d, 2H, $J = 7.3$ Hz)	$\text{ArCH}_2\text{CH}=\text{C}$
2.90 - 2.80 (m, 4H)	$\text{ArCH}_2\text{CH}_2\text{Ar}$
2.02 - 1.97 (m, 4H)	$\text{C}=\text{CHCH}_2\text{CH}_2\text{C}=\text{C}$
1.72, 1.60, 1.52 (s, 15H)	$\text{O}_2\text{C}(\text{CH}_3)_2$ , $\text{C}=\text{CCH}_3$ , $\text{C}=\text{C}(\text{CH}_3)_2$ ,

$\delta$ /ppm	$^{13}\text{C}$ Assignment
160.3	Ar-COOR
156.3	Ar(C)-OH
152.4	Ar(C)-OC(CH <sub>3</sub> ) <sub>2</sub>
146.5, 126.5	$\text{CH}=\text{C}(\text{CH}_3)\text{R}$
141.9, 140.3	Ar(C)-CH <sub>2</sub> CH <sub>2</sub> -Ar(C)
132.1, 125.9	$\text{CH}=\text{C}(\text{CH}_3)_2$
128.8, 128.7, 128.4	Ar
122.9	Ar(C)-CH <sub>2</sub> C=C
120.8	Ar(C)-COOR
113.3	OC(CH <sub>3</sub> ) <sub>2</sub>
104.7	Ar(C)
56.4	OCH <sub>3</sub>
39.8, 30.9	$\text{C}=\text{CCH}_2\text{CH}_2\text{C}=\text{C}$
37.4, 36.9	$\text{ArCH}_2\text{CH}_2\text{Ar}$
26.5, 17.8	$\text{C}=\text{C}(\text{CH}_3)_2$
25.7	Ar-CH <sub>2</sub> -C=C
22.9, 22.1, 16.3	$\text{C}(\text{CH}_3)_2$ , $\text{C}=\text{CCH}_3\text{R}$

Amorfrutin B



$\delta$ /ppm	$^1\text{H}$ Assignment
7.21 - 7.13 (m, 5H)	Ar-H
6.29 (s, 1H)	OH
5.16 (t, 1H, $J = 7.1$ Hz)	$\text{RCH}_3\text{C}=\text{CH}$
4.98 (t, 1H, $J = 7.1$ Hz)	$(\text{CH}_3)_2\text{C}=\text{CH}$
3.69 (s, 3H)	$\text{OCH}_3$
3.32, 3.31 (d, 2H, $J = 7.3$ Hz)	$\text{ArCH}_2\text{CH}=\text{C}$
2.81- 2.77 (m, 4H)	$\text{ArCH}_2\text{CH}_2\text{Ar}$
2.01 - 1.96 (m, 4H)	$\text{C}=\text{CHCH}_2\text{CH}_2\text{C}=\text{C}$
1.72 (s, 3H), 1.60 (s, 3H), 1.51 (s, 3H)	$\text{C}=\text{CCH}_3$ , $\text{C}=\text{CCH}_3\text{CH}_3$

$\delta$ /ppm	$^{13}\text{C}$ Assignment
157.7	COOH
155.5	Ar(C)- $\text{OCH}_3$
141.8	Ar(C)-OH
141.3	Ar(C)- $\text{CH}_2\text{CH}_2$
137.9	$\text{CH}_2\text{CH}_2$ -Ar(C)
131.8, 123.9	$\text{CH}=\text{C}(\text{CH}_3)\text{R}$
128.5, 128.3	Ar
125.9, 122.1	$\text{CH}=\text{C}(\text{CH}_3)_2$
112.7	Ar(C)- $\text{CH}_2\text{C}=\text{C}$
108.9	Ar(C)-COOH
103.6	Ar(C)
55.7	$\text{OCH}_3$
39.7, 26.5	$\text{C}=\text{CCH}_2\text{CH}_2\text{C}=\text{C}$
38.0, 37.7	$\text{ArCH}_2\text{CH}_2\text{Ar}$
25.7, 17.7	$\text{C}=\text{C}(\text{CH}_3)_2$
22.1	Ar- $\text{CH}_2$ - $\text{C}=\text{C}$
16.1	$\text{C}=\text{CCH}_3\text{R}$