

Supplementary Information

Molecular iodine-catalyzed one-pot synthesis of some new Hantzsch 1,4-dihydropyridines at ambient temperature

J. D. Akbari, S. D. Tala, M. F. Dhaduk, and H. S. Joshi*

*Department of Chemistry, Saurashtra University,
Rajkot – 360005, Gujarat, India*

E-mail: drhsjoshi49@gmail.com, jdakbari@gmail.com

Contents

1. NMR for 4b	S2
2. MS data for 9a	S3
3. MS data for 6b	S4
4. MS data for 4f	S5
5. MS data for 4d	S6
6. NMR for 9a	S7
7. NMR for 4e	S8

AVANCE II 400 NMR
Spectrometer
SAIF
Panjab University
Chandigarh

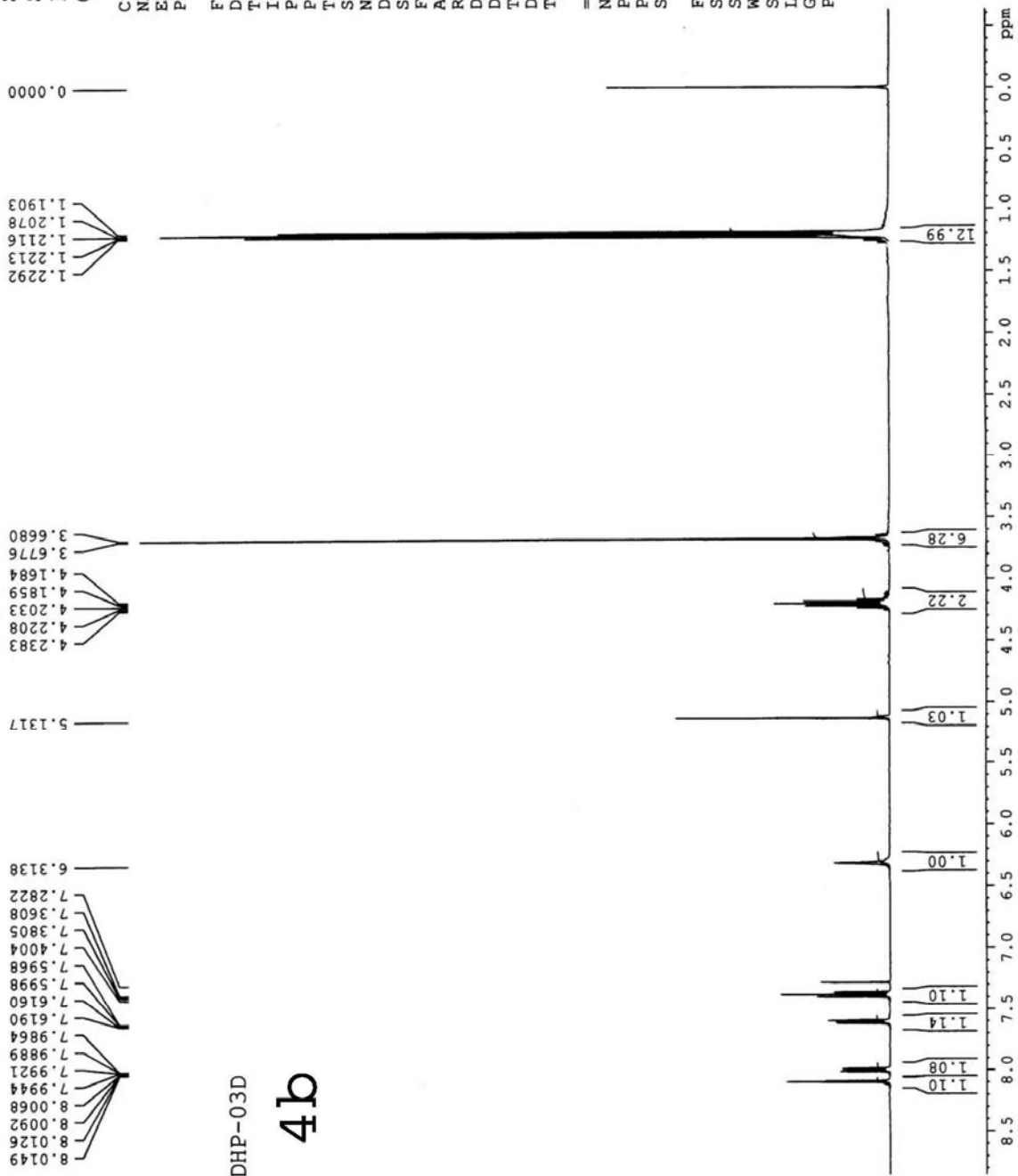
Current Data Parameters
NAME Jun19-2007
EXPNO 100
PROCNO 1

F2 - Acquisition Parameters

Date_ 20070619
Time 12.32
INSTRUM spect
PROBHD 5 mm PABBO BB-
PULPROG zg30
TD 65536
SOLVENT CDC13
NS 16
DS 2
SWH 12019.230 Hz
FIDRES 0.183399 Hz
AQ 2.7263477 sec
RG 90.5
DW 41.600 usec
DE 6.00 usec
TE 297.3 K
D1 1.00000000 sec
TD0 1

==== CHANNEL f1 =====
NUC1 1H
P1 10.90 usec
PL1 -3.00 dB
SF01 400.1324710 MHz

F2 - Processing parameters
SI 32768
SF 400.1299999 MHz
WDW EM
SSB 0
LB 0.30 Hz
GB 0
PC 1.00



DHP-03D
4b

avtar_saiipu@yahoo.co.in

SAURASHTRA UNIVERSITY - RAJKOT
DEPT. OF CHEMISTRY

Sample Information

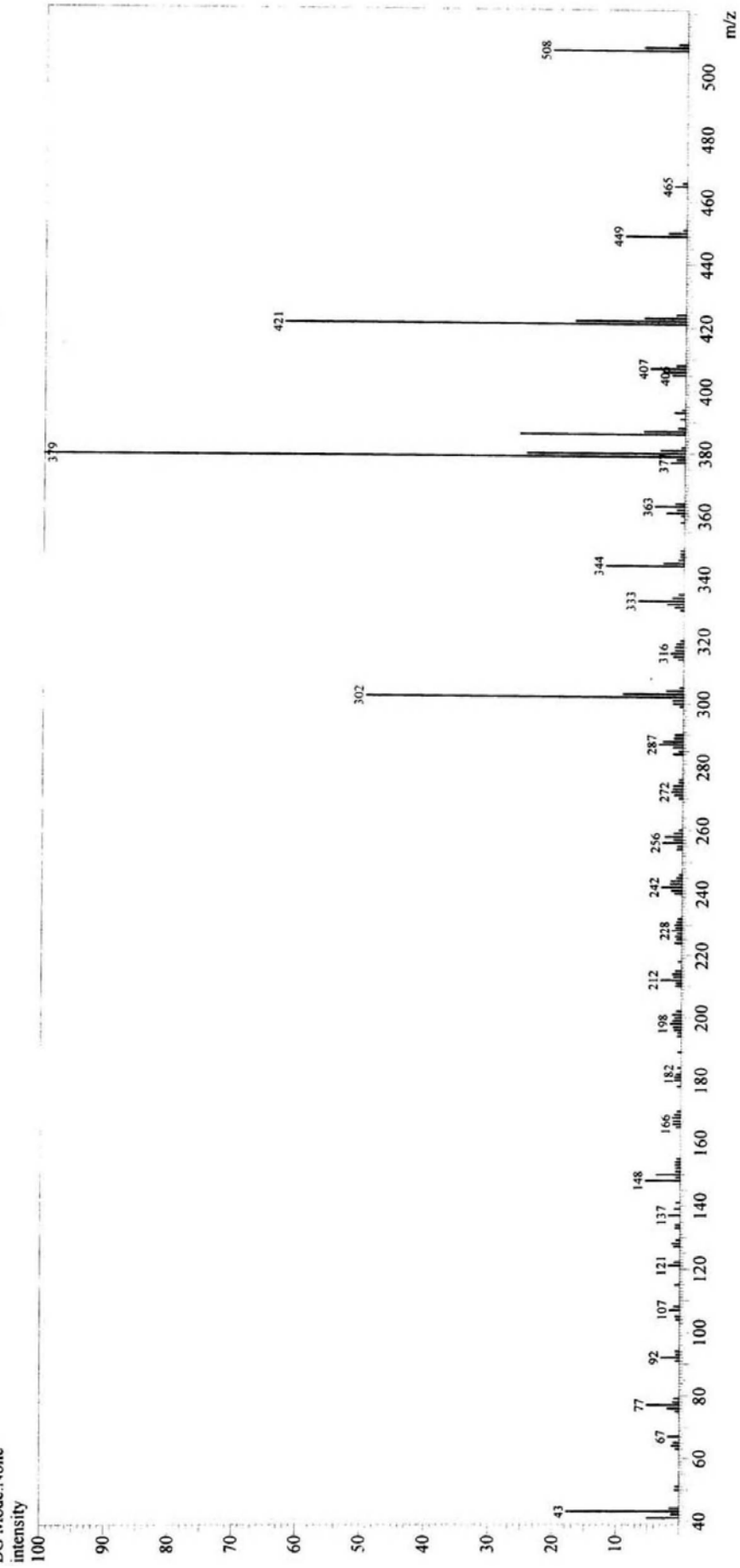
Analyzed by : PANKAJ KACHHADIA
Analyzed : 6/14/2007 12:47:11 PM
Sample Name : DHP-02C
Sample ID : DHP-02C
Data File : C:\GCMSsolution\Data\H.S.JOSHNDHP-02C.QGD
Method File : C:\GCMSsolution\Data\Project\DI.qgm
Tuning File : C:\GCMSsolution\System\Tune\Tune121206.qgt

9a

Line#: 1 R Time: 6.6 (Scan#: 755)
Mass Peaks: 167 Base Peak: 379 (232697)

Raw Mode: Single 6.6(755)

BG Mode: None



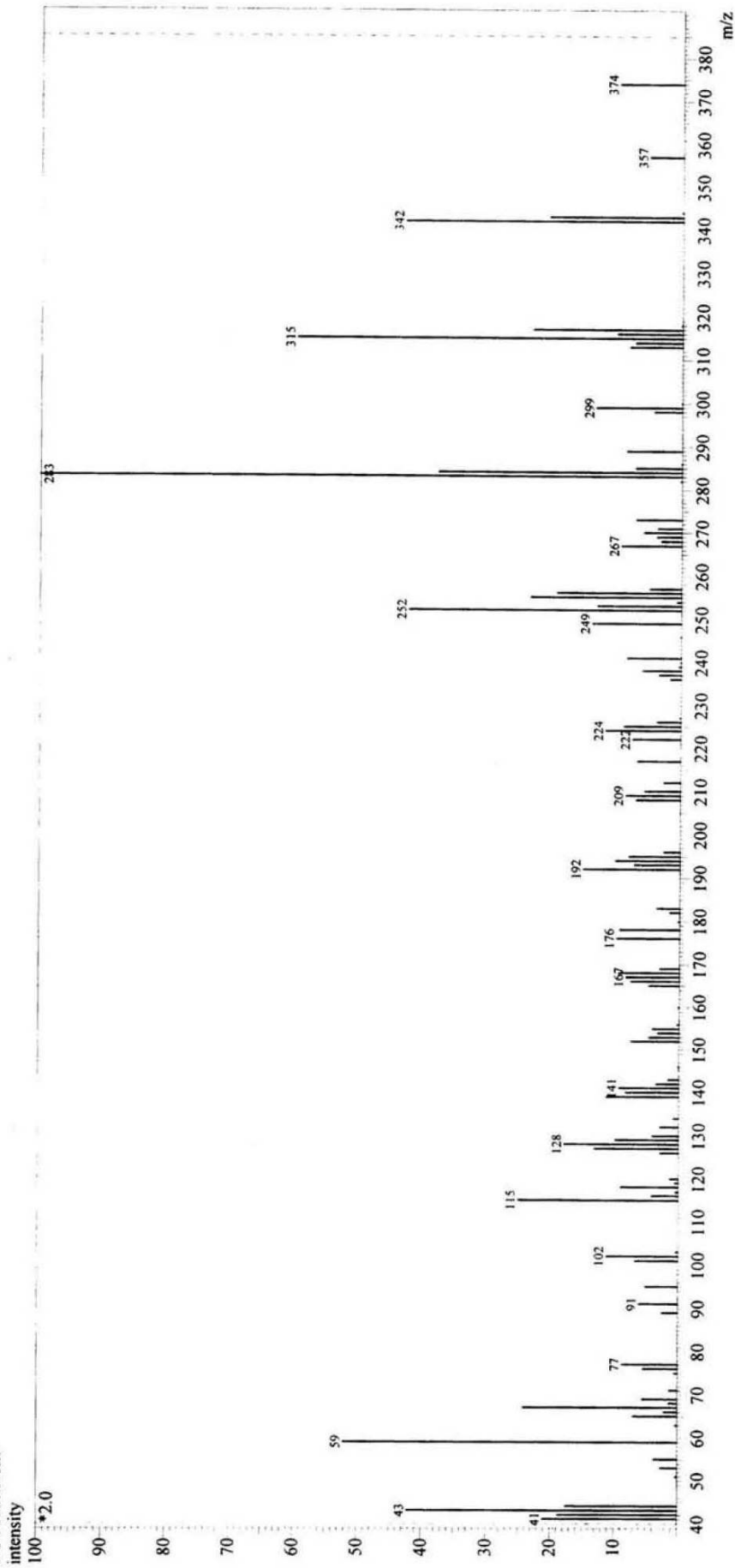
SAURASHTRA UNIVERSITY - RAJKOT
DEPT. OF CHEMISTRY

Sample Information

Analyzed by : PANKAJ KACHHADIA
Analyzed : 6/9/2007 4:26:55 PM
Sample Name : DHP-01F
Sample ID : DHP-01F
Data File : C:\GCMSsolution\Data\H.S.JOSH\HDP-01F.QGD
Method File : C:\GCMSsolution\Data\Project\1\DI.qgm
Tuning File : C:\GCMSsolution\System\Tune\1\tune1.21206.qgt

6b

Line#: 1 R. Time: 4.1 (Scan#: 458)
MassPeaks: 114 BasePeak: 283(26478)
RawMode: Averaged 2.6-5.0(271-569)
BG Mode: None



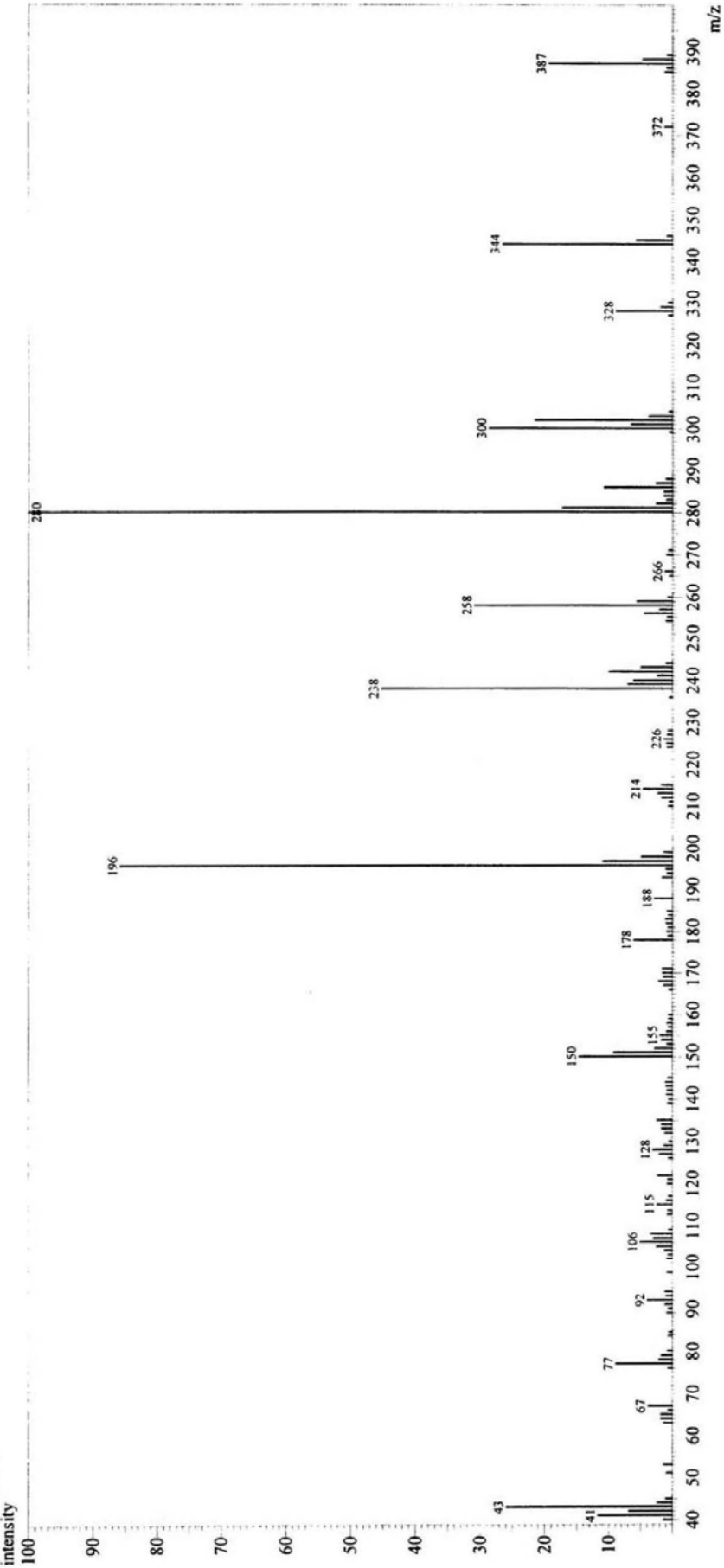
SAURASHTRA UNIVERSITY - RAJKOT
DEPT. OF CHEMISTRY

Sample Information

Analyzed by : PANKAJ KACHHADIA
Analyzed : 3/29/2007 11:56:05 AM
Sample Name : DHP-02A
Sample ID : DHP-02A
Data File : C:\GCMSsolution\Data\H.S.JOSH\DHP-02A.QGD
Method File : C:\GCMSsolution\Data\Project1\DI.qgm
Tuning File : C:\GCMSsolution\System1\tune121206.qgt

4f

Line#: 1 R Time: 1.0(Scan#: 83)
MassPeaks: 150 BasePeak: 280(216280)
RawMode: Single 1.0(83)
BG Mode: None



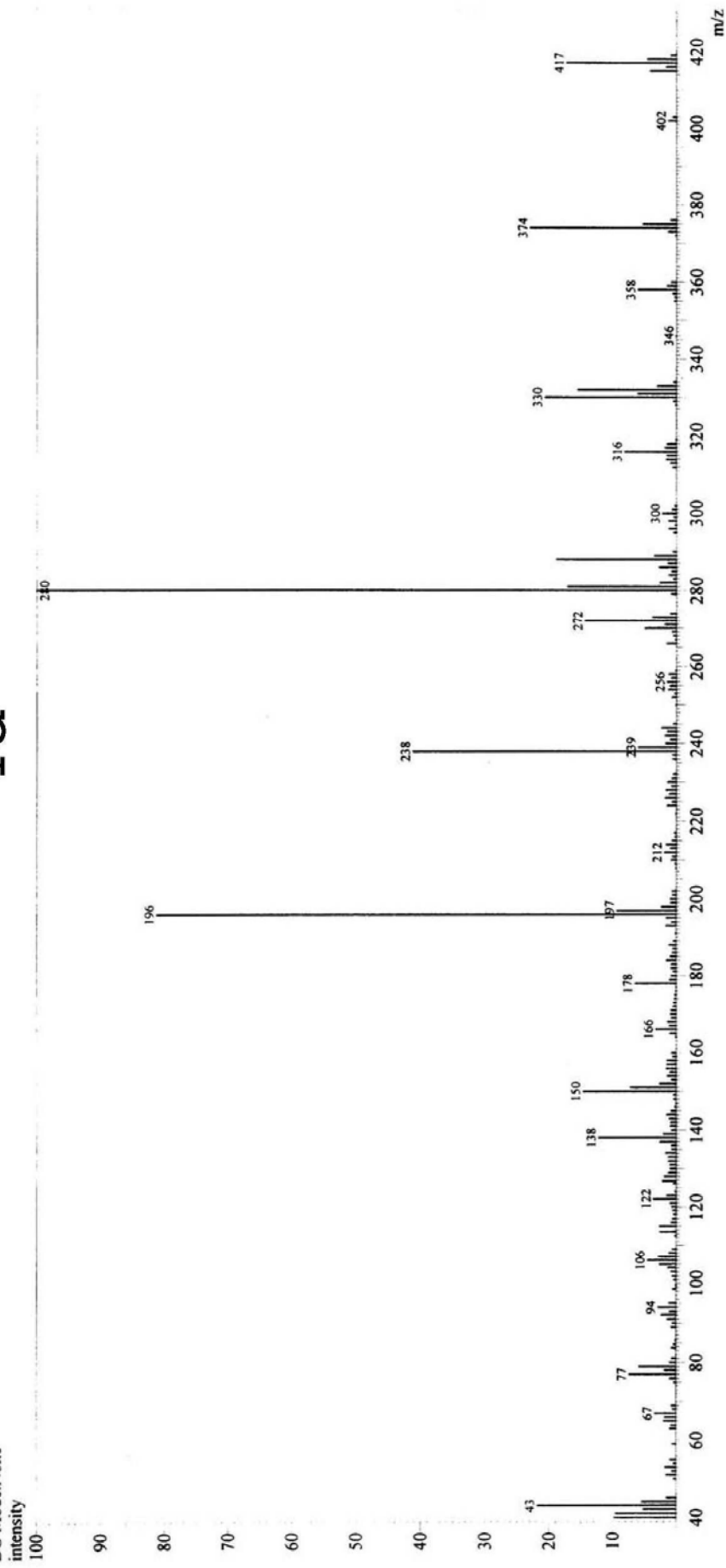
SAURASHTRA UNIVERSITY - RAJKOT
DEPT. OF CHEMISTRY

Sample Information

Analyzed by : PANKAJ KACHHADIA
Analyzed : 4/3/2007 3:51:31 PM
Sample Name : DHP-05A
Sample ID : DHP-05A
Data File : C:\GCMSsolution\Data\H.S.JOSHIDHP-05A.QGD
Method File : C:\GCMSsolution\Data\Project\VDI.qgm
Tuning File : C:\GCMSsolution\System\Tune1\tune1.21206.qgt

Line#: 1 R. Time: 1.6 (Scan#: 160)
Mass Peaks: 237 BasePeak: 280 (314447)
Raw Mode: Averaged 1.4-1.8 (136--178)
BG Mode: None

4d



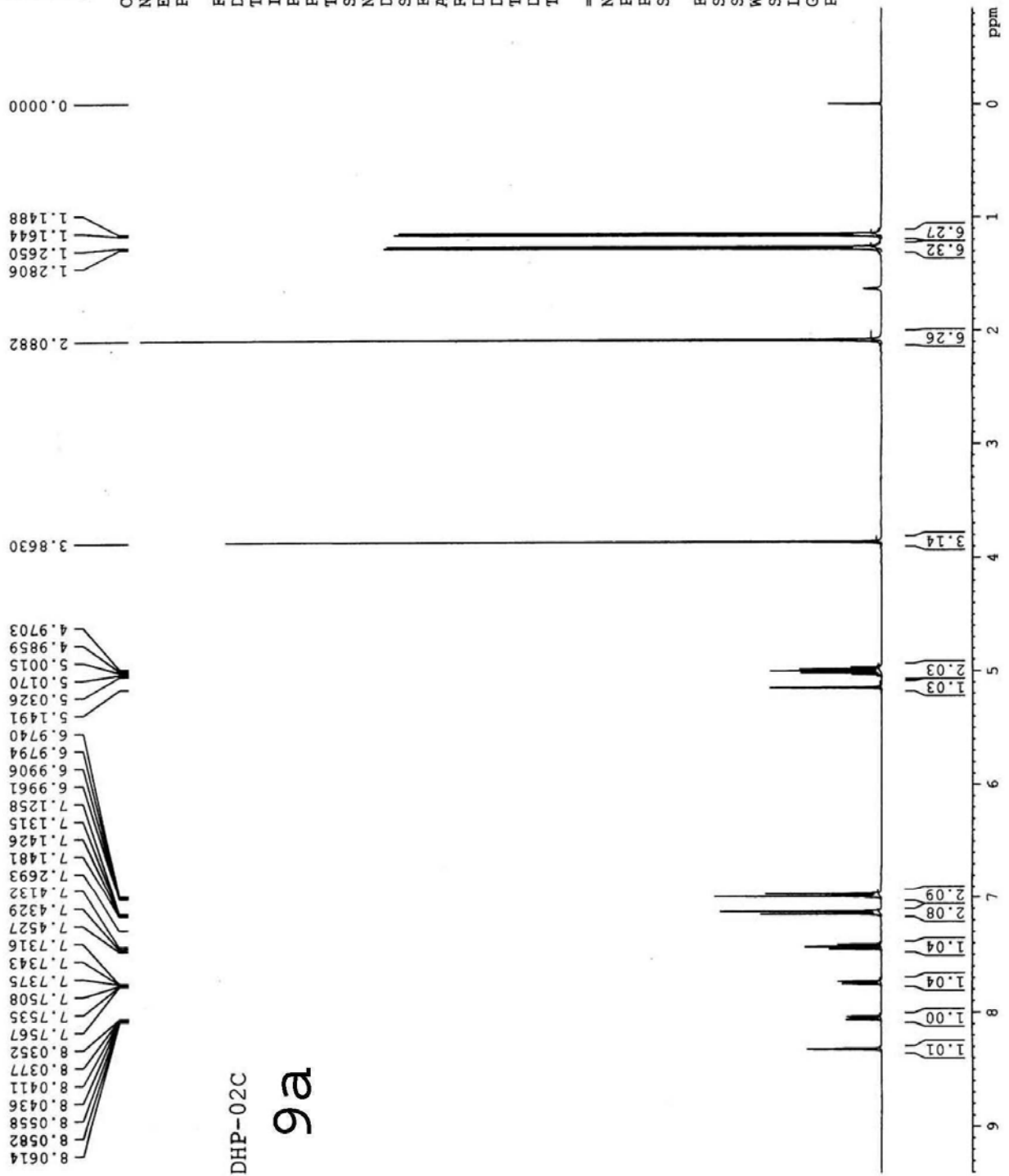
AVANCE II 400 NMR
Spectrometer
SAIF
Panjab University
Chandigarh

Current Data Parameters
NAME Aug08-2007
EXPNO 390
PROCNO 1

F2 - Acquisition Parameters
Date_ 20070808
Time_ 20.56
INSTRUM spect
PROBHD 5 mm PABBO BB-
PULPROG zg30
TD 65536
SOLVENT CDCl3
NS 16
DS 2
SWH 12019.230 Hz
FIDRES 0.183399 Hz
AQ 2.7263477 sec
RG 144
DW 41.600 usec
DE 6.00 usec
TE 296.7 K
D1 1.00000000 sec
TD0 1

==== CHANNEL f1 =====
NUC1 1H
P1 10.90 usec
PL1 -3.00 dB
SFO1 400.1324710 MHz

F2 - Processing parameters
SI 32768
SF 400.1300057 MHz
WDW EM
SSB 0
LB 0.30 Hz
GB 0
PC 1.00



DHP-02C
9a

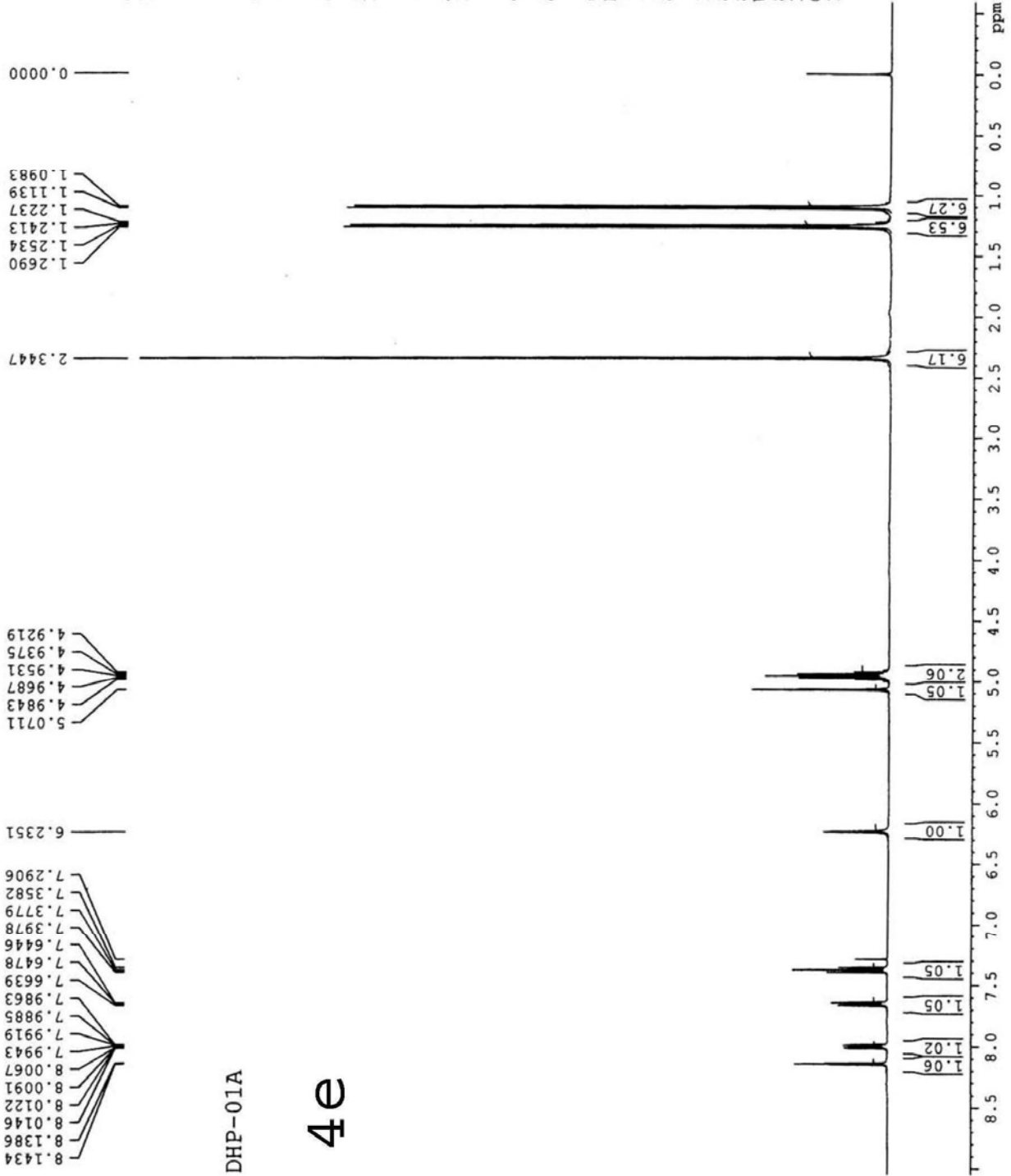
AVANCE 11 400 NMR
Spectrometer
SAIF
Panjab University
Chandigarh

Current Data Parameters
NAME Jun19-2007
EXPNO 70
PROCNO 1

F2 - Acquisition Parameters
Date_ 20070619
Time 12.11
INSTRUM spect
PROBHD 5 mm FABBO BB-
PULPROG zg30
TD 65536
SOLVENT CDC13
NS 16
DS 2
SWH 12019.230 Hz
FIDRES 0.183399 Hz
AQ 2.7263477 sec
RG 45.2
DW 41.600 usec
DE 6.00 usec
TE 297.1 K
D1 1.0000000 sec
TD0 1

==== CHANNEL f1 =====
NUC1 1H
P1 10.90 usec
PL1 -3.00 dB
SFO1 400.1324710 MHz

F2 - Processing parameters
SI 32768
WDW EM
SSB 0
LB 0.30 Hz
GB 0
PC 1.00



DHP-01A

4e